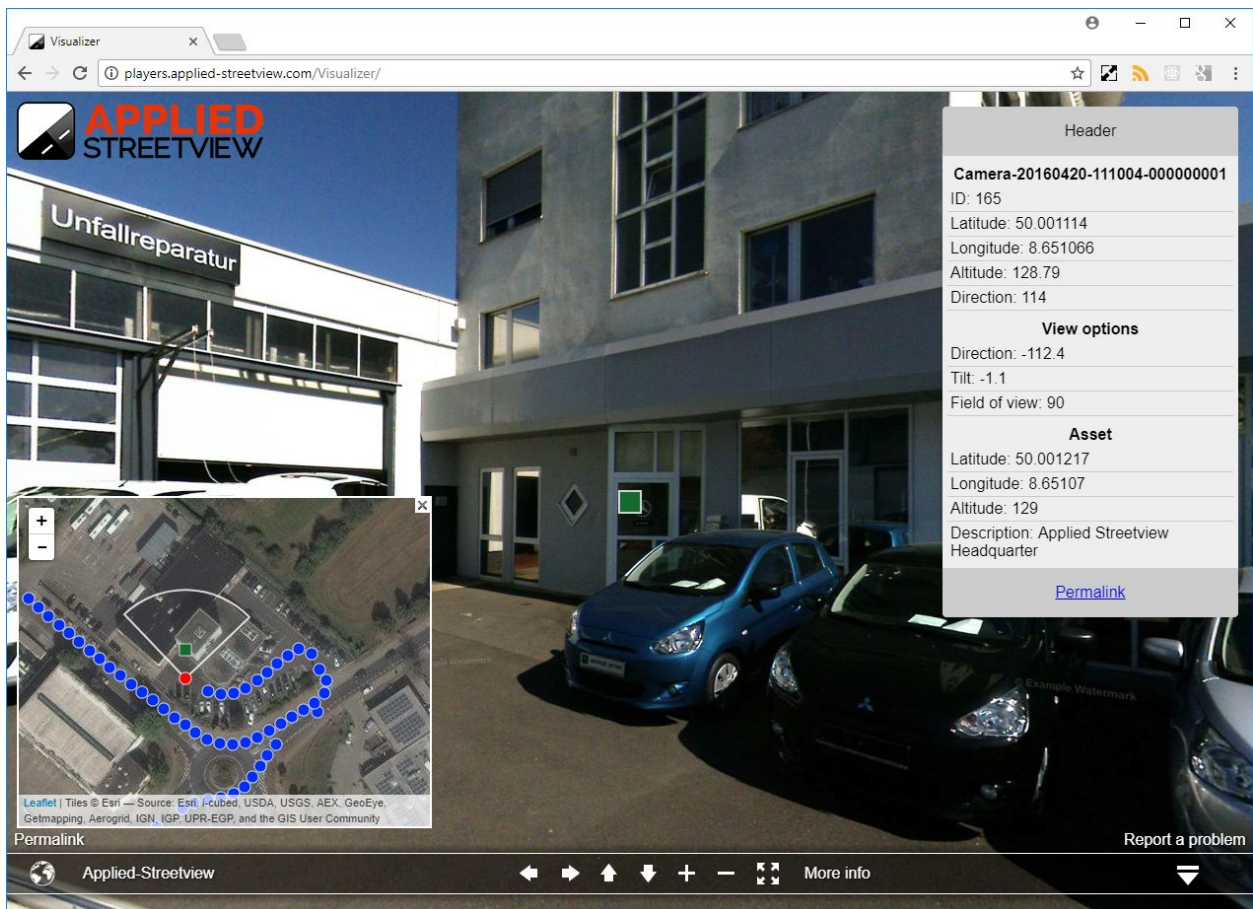




## Visualizer Manual

A plug-in for the streetview player.



# Index

<b>Why Visualizer?</b>	<b>3</b>
<b>Get Visualizer</b>	<b>4</b>
<b>Installation</b>	<b>5</b>
<b>Customization</b>	<b>6</b>
<b>Translation</b>	<b>6</b>
<b>A more powerful solution</b>	<b>7</b>
<b>Support</b>	<b>8</b>
<b>Consulting</b>	<b>8</b>

# Why Visualizer?

Let's assume your company already has 100000 geo-referenced assets stored in a database. How do you link them to the 5000 kilometers of streetviews that you just recorded?

Just add the **Visualizer** to the player generated by the [Creator](#) program.

Then, have your existing system generate a URL for each of your assets containing at least the **Latitude** and **Longitude** values:

[http://players.applied-streetview.com/Visualizer/?v\\_lat=50.001217&v\\_lng=8.651070](http://players.applied-streetview.com/Visualizer/?v_lat=50.001217&v_lng=8.651070)

Optionally, you can also provide the **Altitude** and **Description**:

[http://players.applied-streetview.com/Visualizer/?v\\_lat=50.001217&v\\_lng=8.651070&v\\_alt=129&v\\_desc=Applied%20Streetview%20Headquarter](http://players.applied-streetview.com/Visualizer/?v_lat=50.001217&v_lng=8.651070&v_alt=129&v_desc=Applied%20Streetview%20Headquarter)

## When clicking the link:

- The link opens the player in a new browser window.
- The Visualizer plug-in shows the streetview closest to the coordinates provided.
- It automatically pans left/right and up/down to show what is at the coordinates provided.
- It displays a marker on the map.
- It displays a marker on the streetview.
- It displays your asset's Description in the data frame in the top right-hand corner of the screen.

When opening the player **without** providing Latitude and Longitude in the URL, the default asset set in the visualizer part of **player.xml** file will be shown:

<http://players.applied-streetview.com/Visualizer>

# Get Visualizer

Visualizer is provided as a .zip file named similarly to this: **visualizer-2.0.47-\*.zip**

Make sure the version of Visualizer matches the version of Creator that created the player.

Check the Visualizer page for the latest news and examples:

<http://www.applied-streetview.com/visualizer/>

Contact the [sales department](#) to purchase the optional Visualizer plug-in.

# Installation

Copy the **visualizer** folder into the **plugins** folder of the player generated by the [Creator](#) program.

Copy the Visualizer configuration code from the file `/plugins/visualizer/xml.txt` to the player's **player.xml** file before the `</krpano>` tag at the very end of the file:

```
<plugin name="visualizer"
  alturl="%BASEDIR%/plugins/visualizer/visualizer.js"
  devices="html5" keep="true"

  show_map_marker="true"
  show_streetview_marker="true"
  show_data_frame="true"

  streetview_marker_size="20"
  map_marker_size="12"
  color="#156c30"
>
<default_asset
  lat="50.001217"
  lng="8.651070"
  alt="129"
  desc="Applied Streetview Headquarter"
  timeline=""
  floor=""
  sv=""
/>
</plugin>
```

**Empty your Browser cache to see the player updated with Visualizer.**

Chrome:

Settings -> More tools -> Clear Browsing data:

Cached images and files

Hosted App data

Click the **Clear browsing data** button.

Ctrl+R to **reload the player in your browser.**

Open Visualizer with a URL providing at least the **Latitude** and **Longitude** values:

[http://players.applied-streetview.com/Visualizer/?v\\_lat=50.001217&v\\_lng=8.651070](http://players.applied-streetview.com/Visualizer/?v_lat=50.001217&v_lng=8.651070)

When opening the player **without** providing Latitude and Longitude in the URL, the default asset set in **player.xml** file will be shown:

<http://players.applied-streetview.com/Visualizer>

# Customization

To modify what the data-frame looks like and what data it displays, edit the html in file **/plugins/visualizer/frame.js**

# Translation

Edit file **/plugins/visualizer/translation.js** to change how the keys from the **frames.js** file are displayed in the data frame:

```
window.translation = {  
  'id': 'ID',  
  'latitude': 'Latitude',  
  'longitude': 'Longitude',  
  'altitude': 'Altitude',  
  'direction': 'Direction',  
  'tilt': 'Tilt',  
  'description': 'Description',  
  'timeline': 'Timeline',  
  'floor': 'Floor',  
  'view': 'View options',  
  'heading': 'Direction',  
  'fov': 'Field of view',  
  'asset': 'Asset',  
  'permalink': 'Permalink',  
  'others': 'Other params',  
  'some': 'Very some',  
  'sv': 'Streetview',  
  'abc': 'ABC Field',  
  // and so on  
};
```

## A more powerful solution

The [Asset Finder plug-in](#), together with the free and open-source custom-data plug-in, are both meant for more complex customization.

Both allow the player to show data geo-referenced by the [Photogram](#) program.

# Support

Please make sure you update Visualizer first.  
Support is provided for the newest version of Visualizer only.  
Maybe your problem has already been solved?

Check

<http://www.applied-streetview.com/creator>

and

<http://www.applied-streetview.com/visualizer>

for new releases first.

## Contact

Support is available in English language.

**Helpdesk:** [support.applied-streetview.com](http://support.applied-streetview.com)  
**E-Mail:** [support@applied-streetview.com](mailto:support@applied-streetview.com)  
**Skype ID:** applied-streetview  
**Phone:** +49 6103 - 372 7494

# Consulting

We are available for hire for consulting.

Please contact:

**E-Mail:** [jan.martin@applied-streetview.com](mailto:jan.martin@applied-streetview.com)  
**Skype ID:** applied-streetview  
**Phone:** +49 6103 - 372 7494