



AS-server User Guide

The screenshot shows the AS server - 1.0.1 web interface. At the top, there is a 'Projects' tab and a 'Help' dropdown menu. Below this, there is a 'NEW PROJECT' button and an 'IP Address' field containing '192.168.1.10'. The main content area is a table with the following data:

Name	URL	UPDATE	EDIT	DELETE
Demo with spaces in project name	http://192.168.1.10:12018/Demo with spaces in project name/player/	UPDATE	EDIT	DELETE
20150425-windowoppa	http://192.168.1.10:12018/20150425-windowoppa/player/	UPDATE	EDIT	DELETE
Timeline-Direction2	http://192.168.1.10:12018/Timeline-Direction2/player/	UPDATE	EDIT	DELETE
Stade01	http://192.168.1.10:12018/Stade01/player/	UPDATE	EDIT	DELETE
Demo	http://192.168.1.10:12018/Demo/player/	UPDATE	EDIT	DELETE

Index

Overview	3
Licensing	4
Installation	7
Add Projects	8
How to make a change?	16
What if does not work?	17
What this is not	18
What if we need more?	19
Support	20

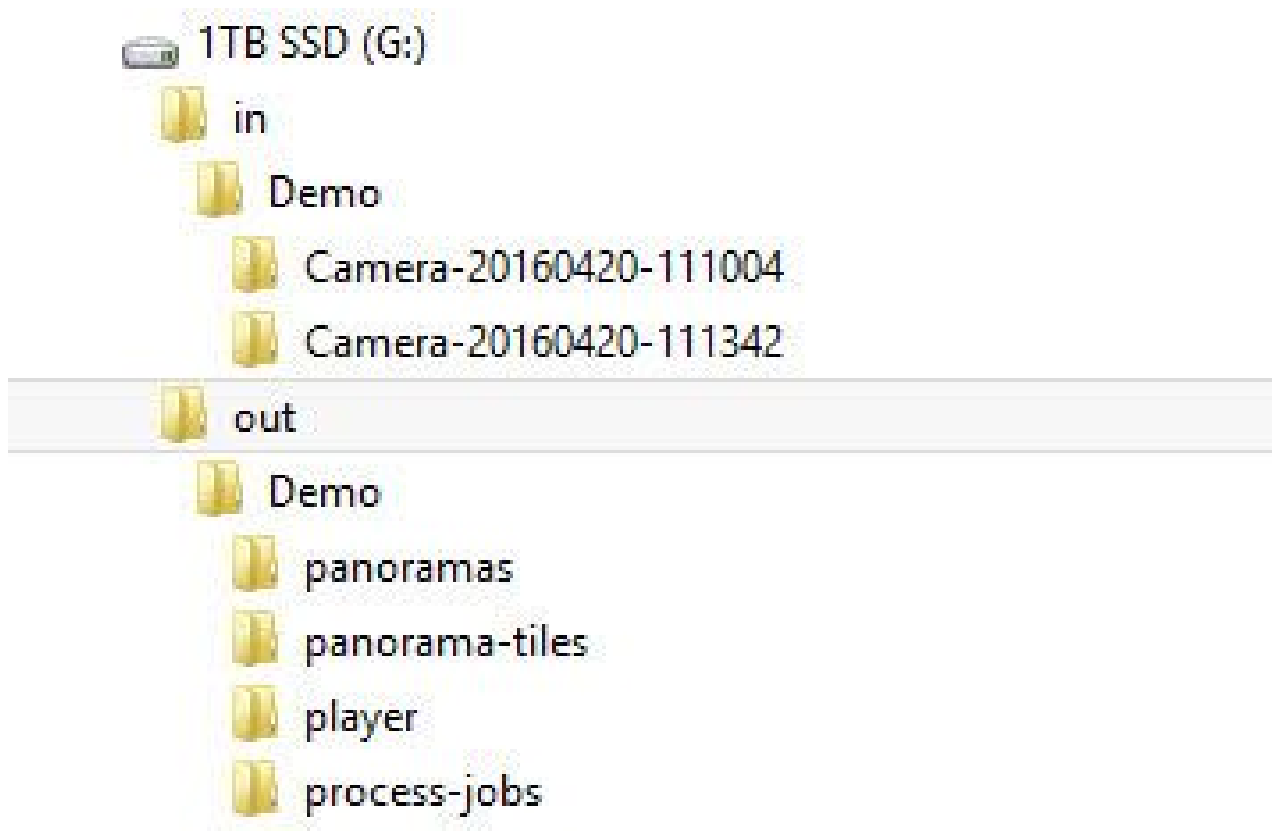
Overview

AS-server is an easy to handle Windows program you can install on any Windows 7, 8 or 10 PC. Both 32 bit and 64 bit Windows is supported.

It makes all the players from Creator project's accessible to your whole office.

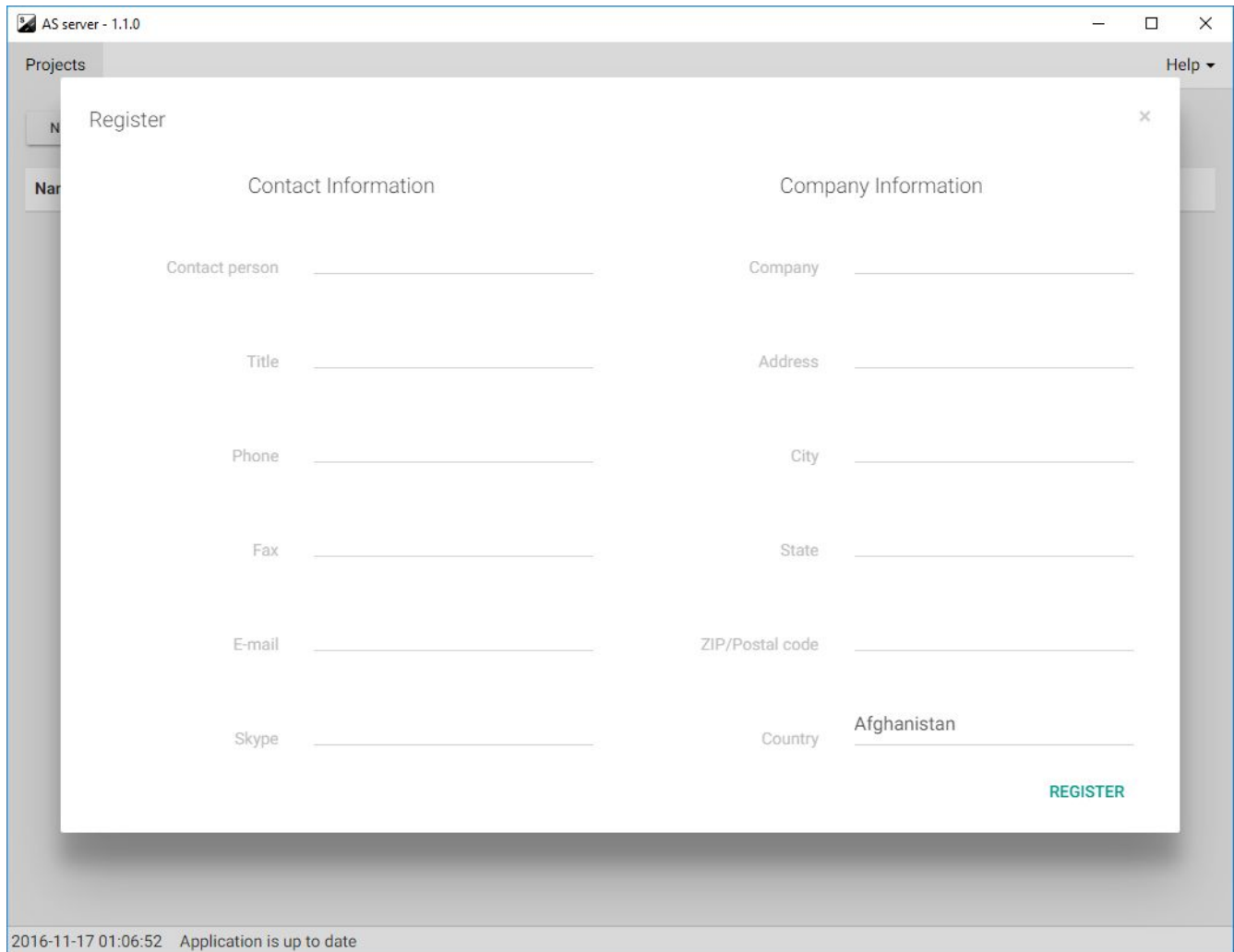
As long as the **AS-server** program runs, your colleagues from your office can access the players. It provides access to many different projects players at the same time.

All it needs is the Project folder (**out/Demo**) with the processed project:



The folder can still be on the processing PC or copied to any other PC. We recommend to copy it to another PC.

Licensing



When starting AS-server the first time the **Register** popup will be displayed. Fill it in and click **Register**.

AS-server then will work for 21 days for evaluation with all the features available. There are no limitations at all.

Purchase and Register

Contact Applied Streetview to license AS-server.

You will get a key for your PC.

In the menu click **Help -> Add activation key**.

Paste the activation key and click the **Register** button.

Offline registration

In case there is no internet connection at the PC you want to install AS-server, instead of the **Register** button you will see a **Register Offline** button.

Click on the **Register Offline** button and follow the instructions from there on how to get your license.

Menu - Help - License Details

Shows the type of the licence, the end of the evaluation period and the end of update period:

Evaluation Licence:

License Details ×

Type: Evaluation Licence

Evaluation ends: 2016.12.07

Payed for licence:

License Details ×

Type: Payed Licence

Usage period ends: Never

Update period ends on: 2017.11.17

Menu - Help - Add activation key

Opens the license **Register** popup. Use this to update your evaluation license to a purchased license or replace current license with a new one - for example when **Update period** ends.

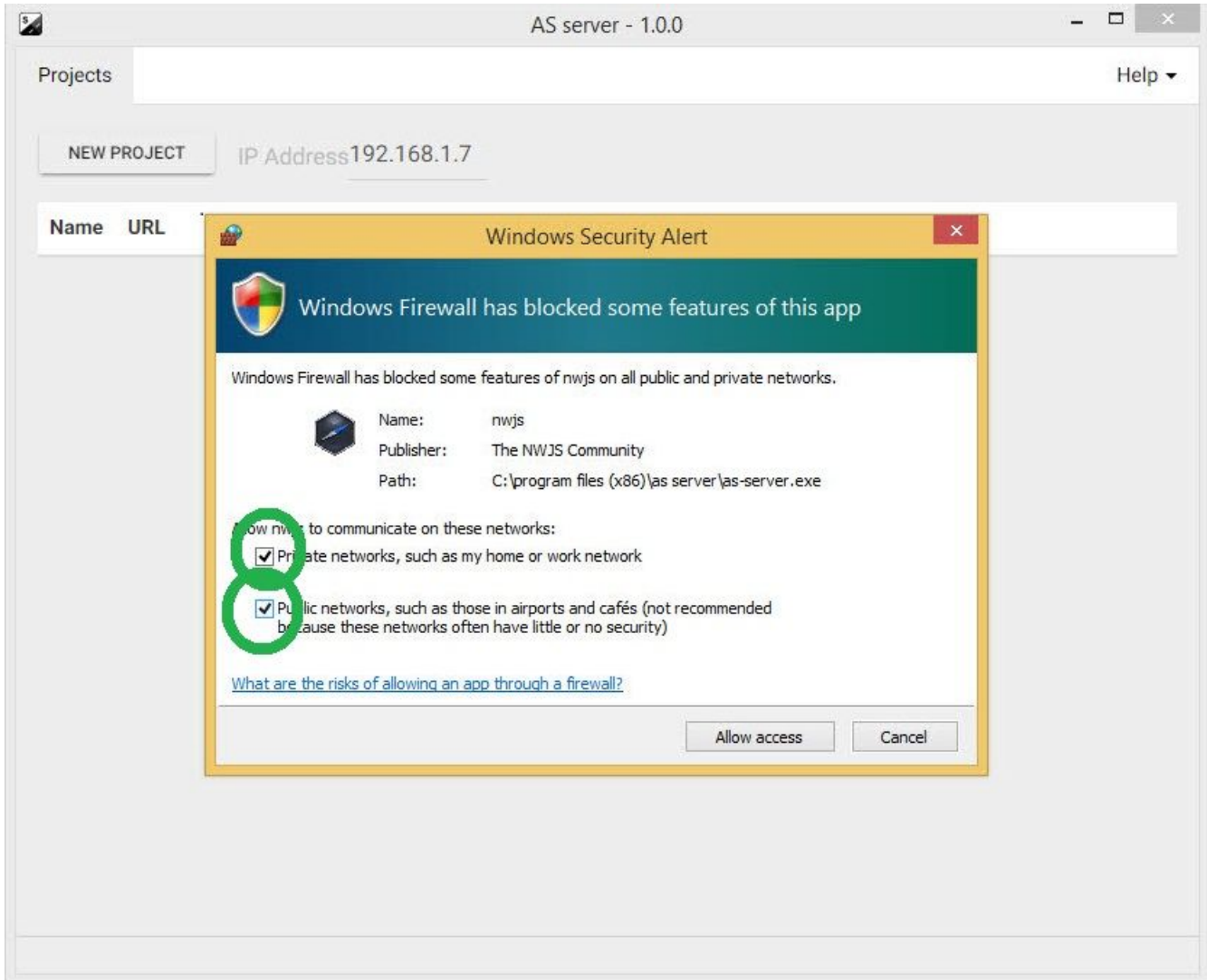
Installation

Check and download the newest AS-server version:

<http://www.applied-streetview.com/as-server/>

Install it.

Allow access to all networks by ticking both options.



Click **Allow access** button.

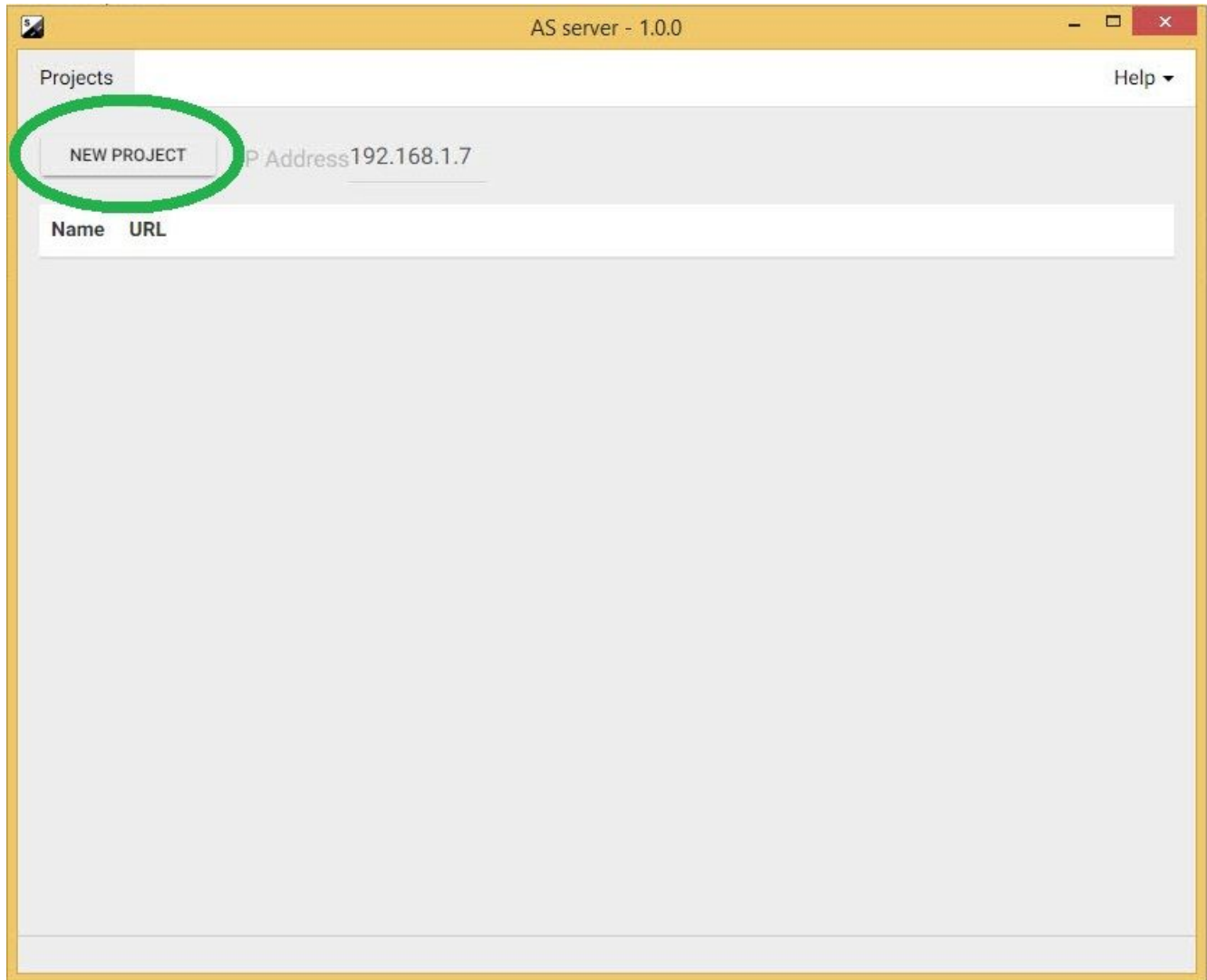
Add Projects

AS-server provides access to many projects players at the same time

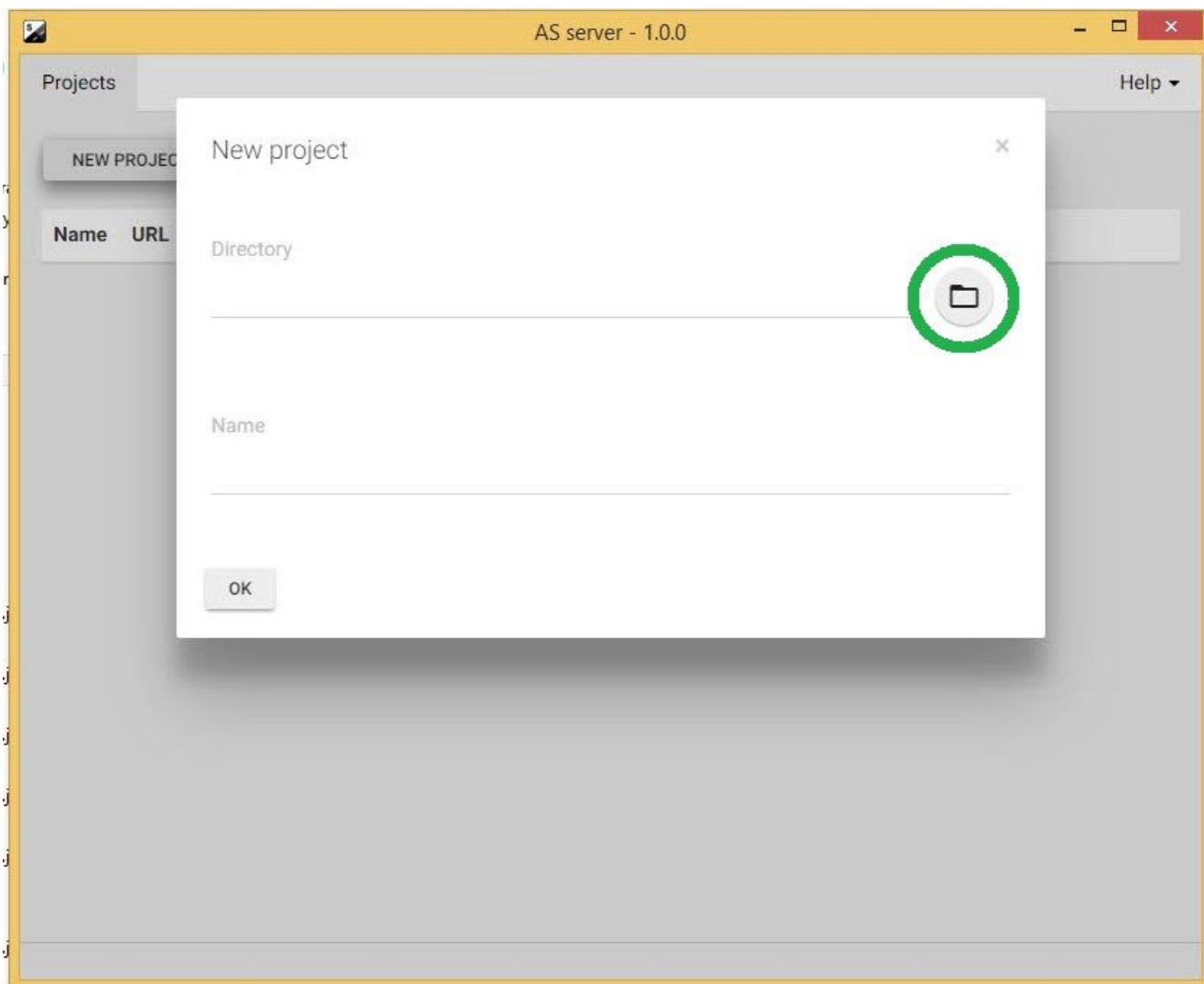
To add a project:

Start AS-server.

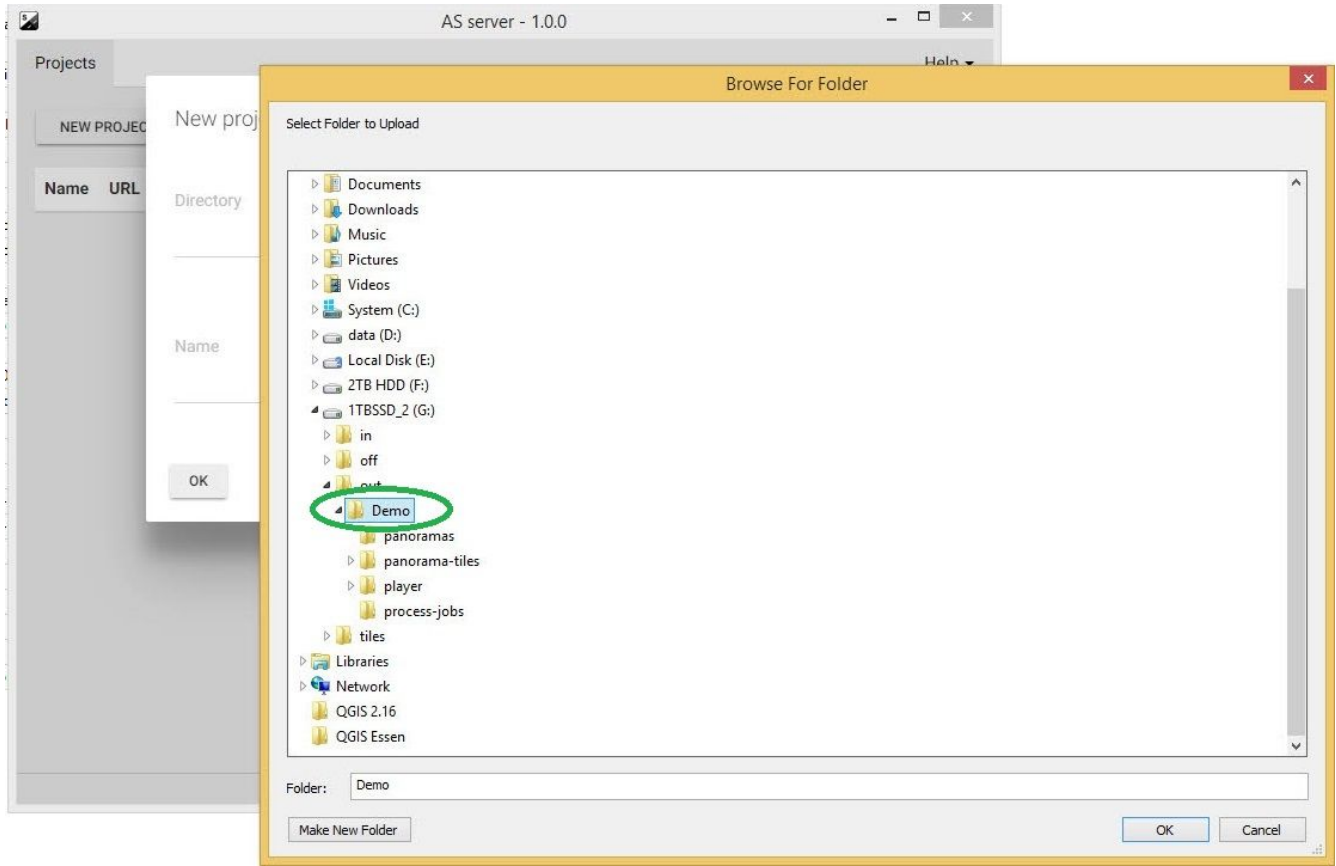
Click the **New Project** button:



Click the folder icon.

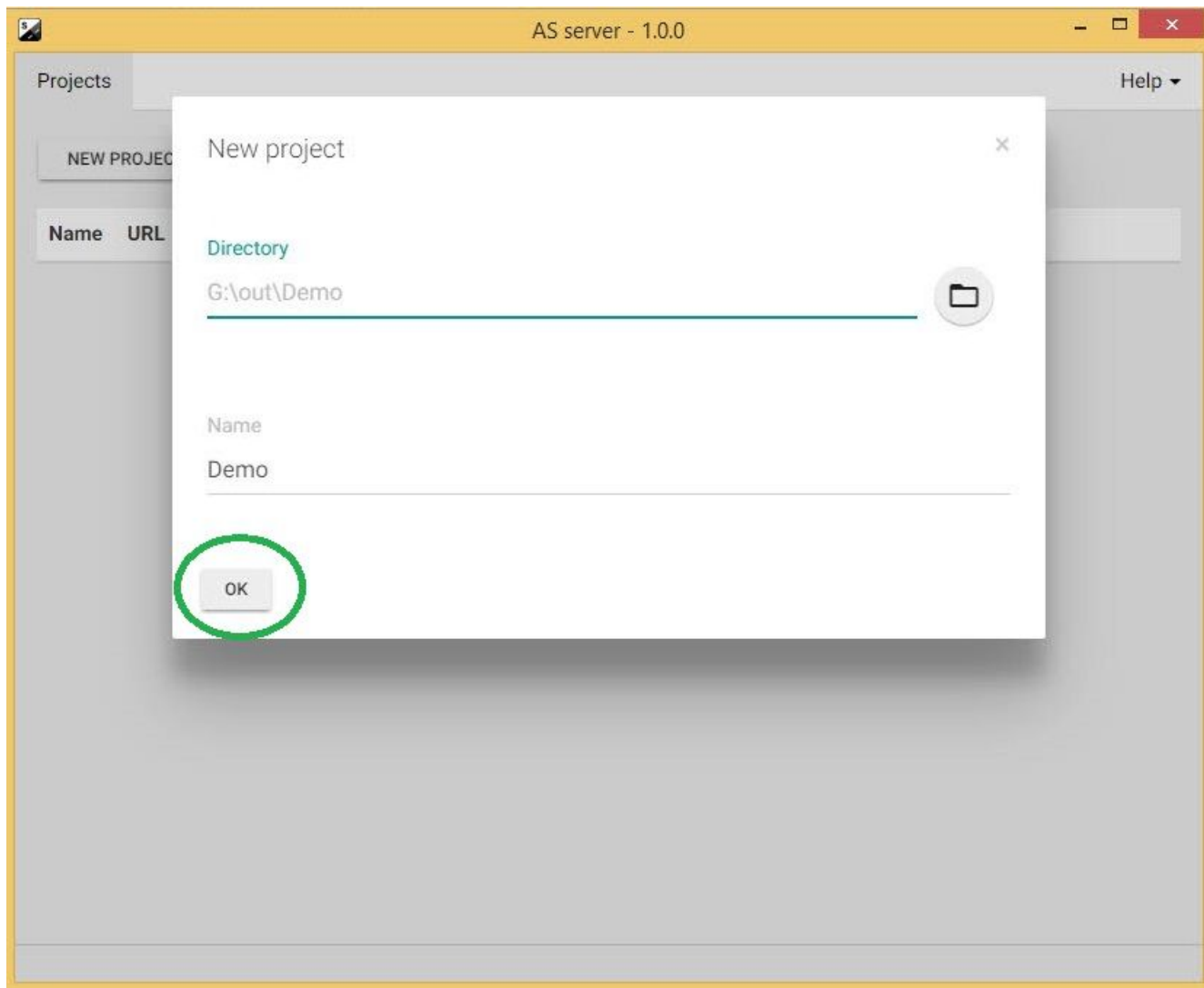


Pick the projects folder

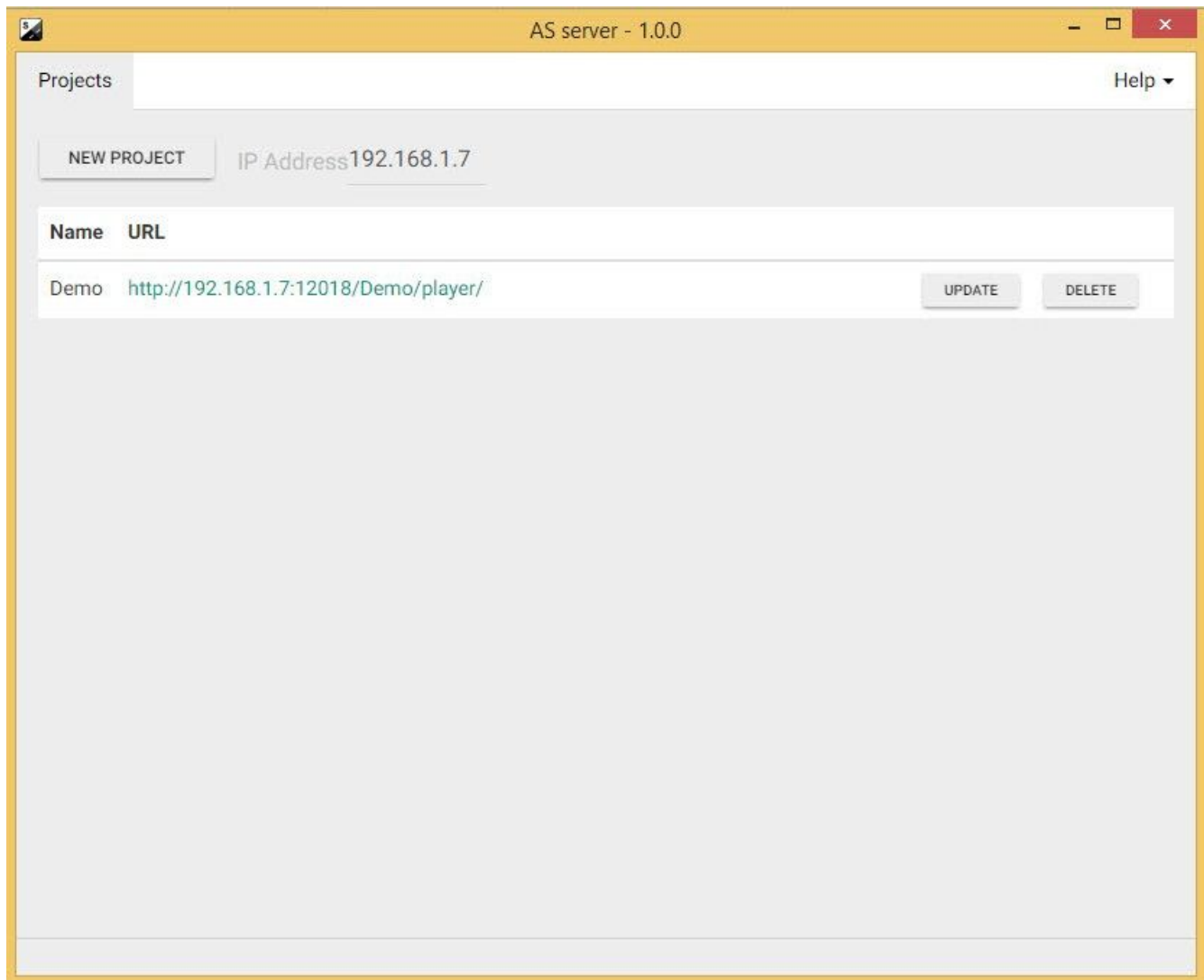


Click **OK**.

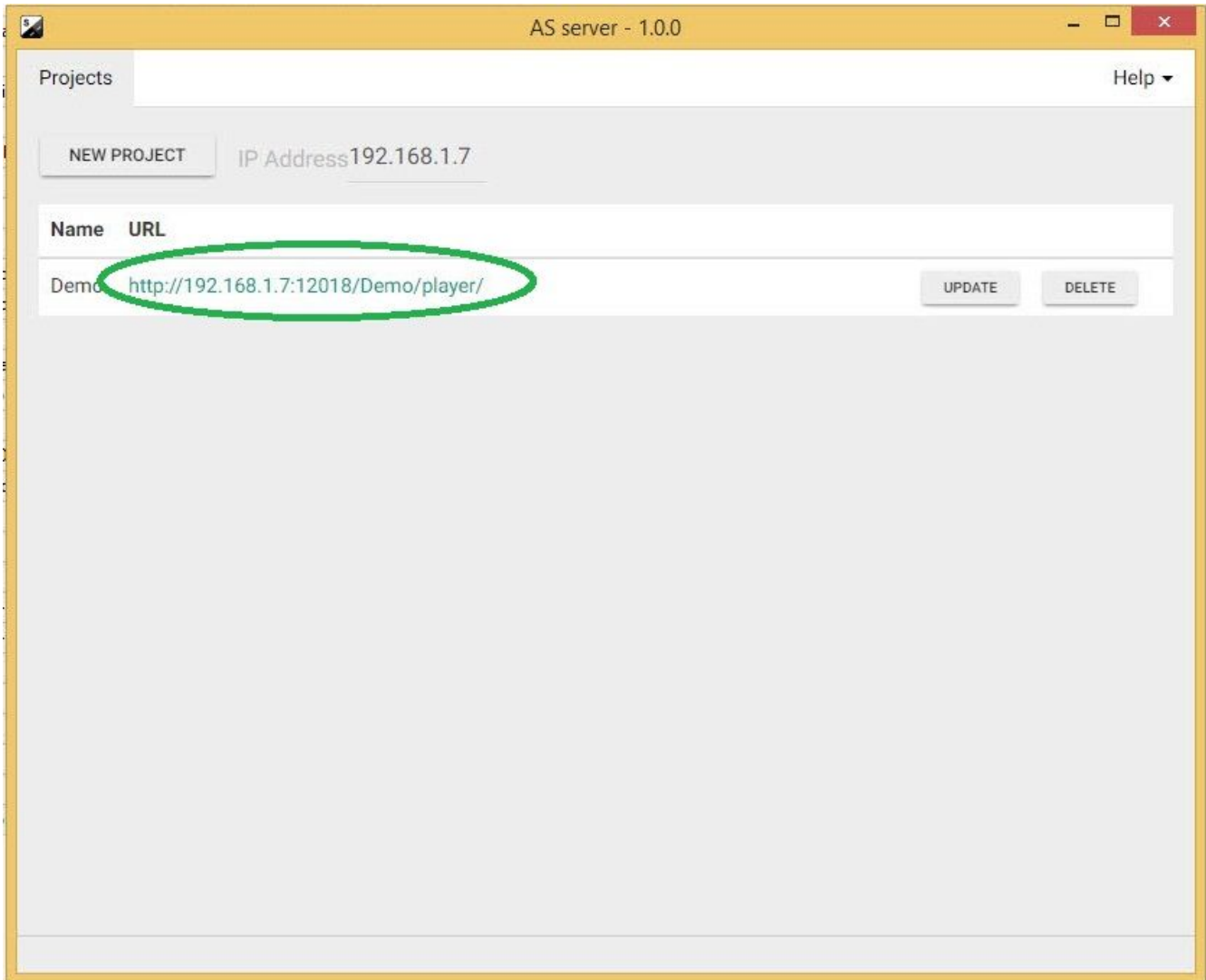
Click OK.



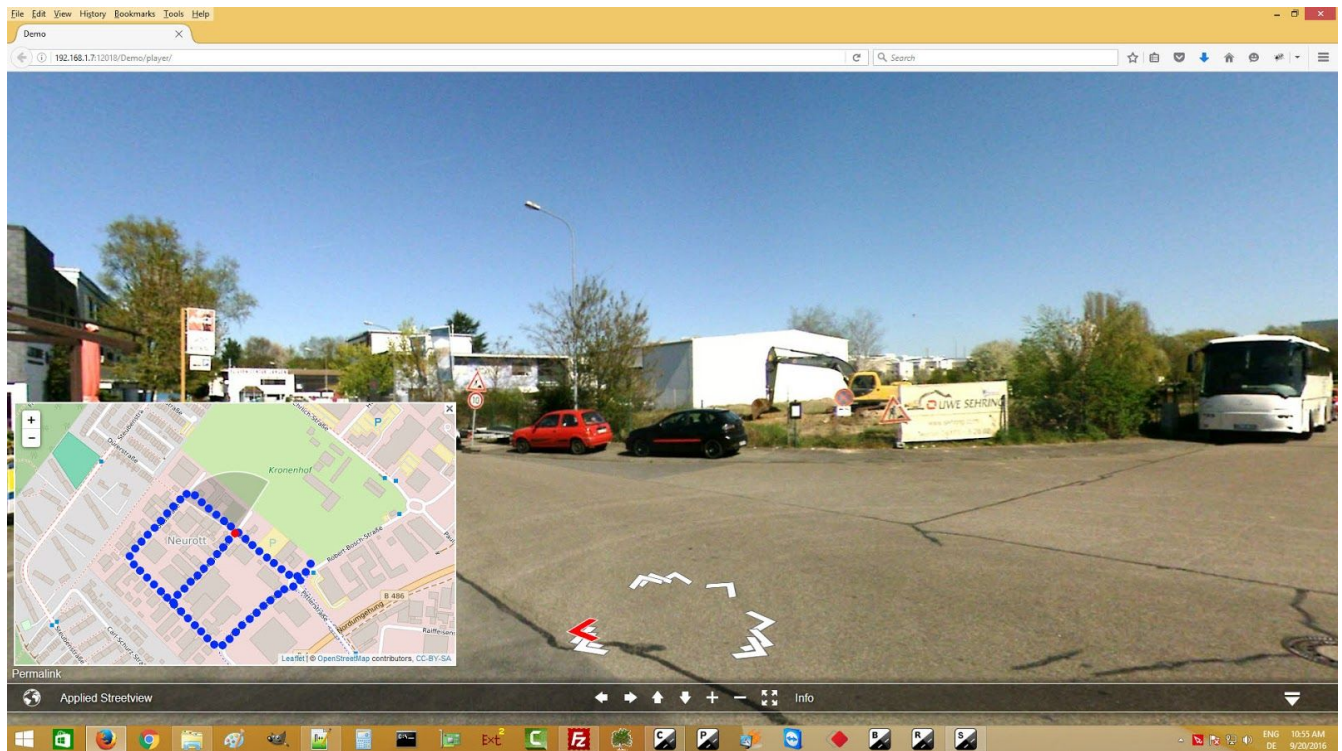
You should see:



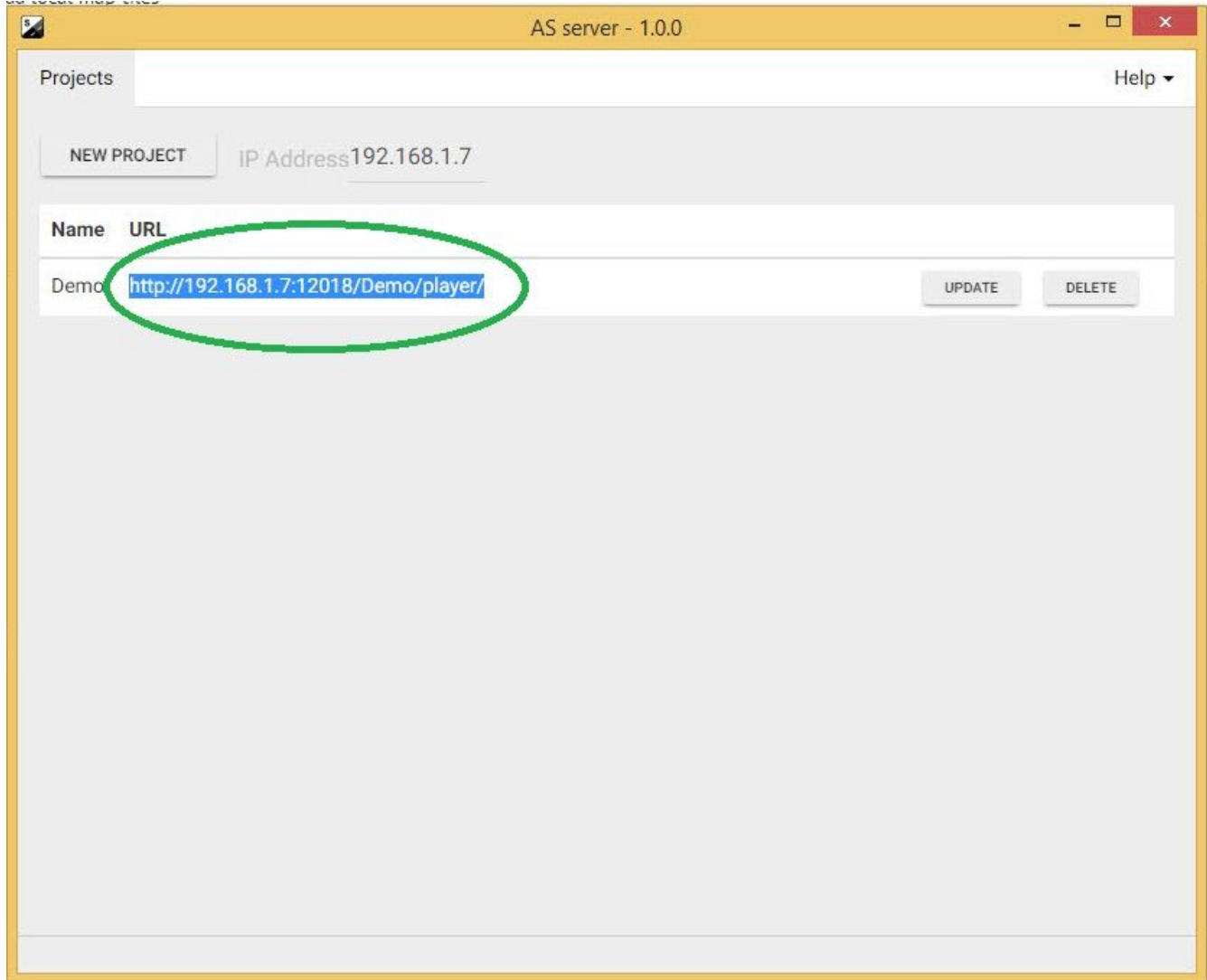
Click the green URL to launch the player in your own PC's browser



You should see:



Copy the URL and provide it to a colleague in your office for testing.



If it works, pass the URL to the other colleagues in your office.

How to make a change?

If you like to make a change to a project, do it in Creator.

Make sure to use the **Overwrite** option when recreating e.g. the player.

Then click the **Update** button in AS-server.

Open the project in the browser. **Reload the browser.**

You now should see the change.

What if does not work?

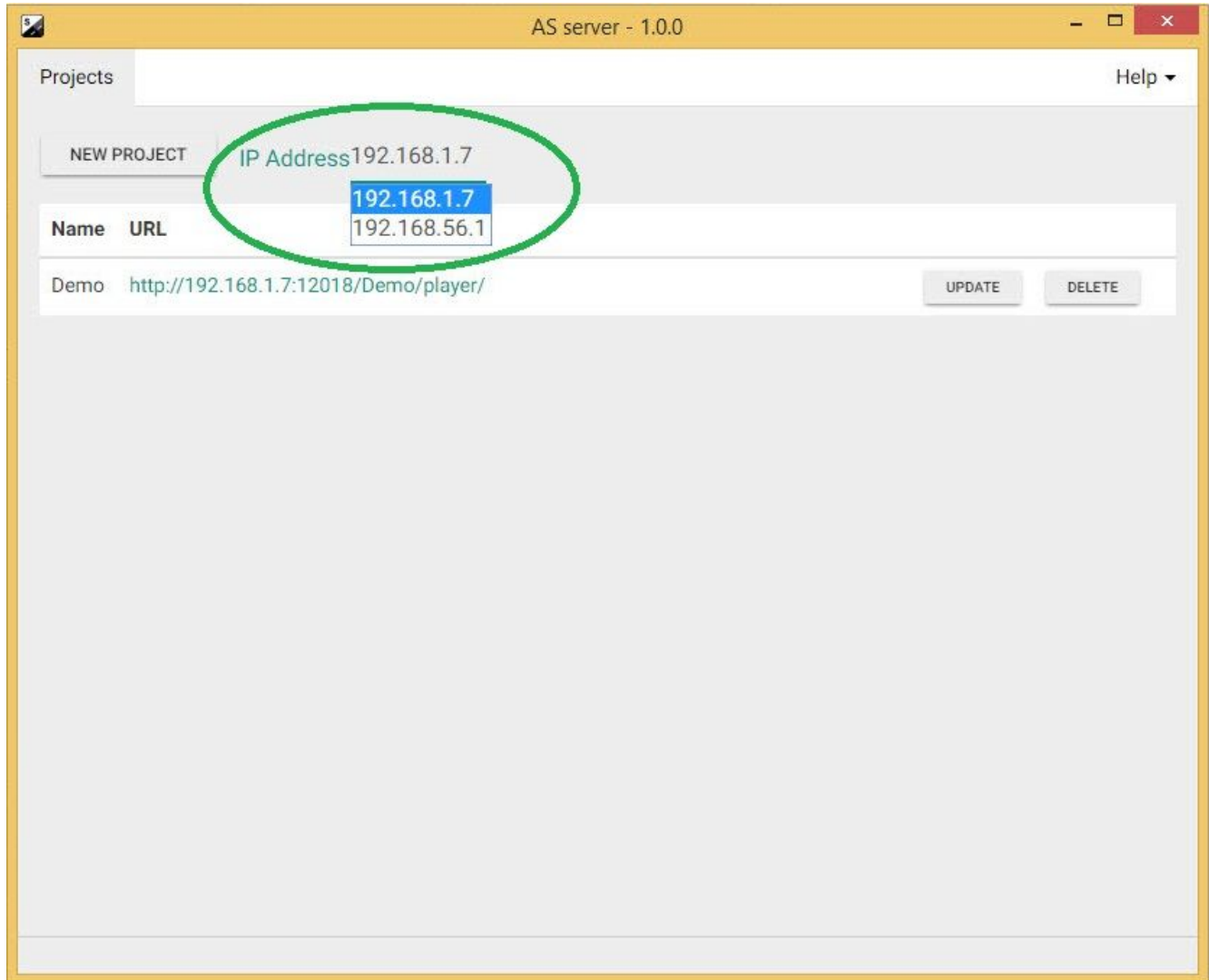
A) Try a different IP address

Your PC can have many IP addresses. AS-server uses the most likely one.

And lists all other IP addresses it finds.

Try the other IP addresses from the list one-by-one, and test them with your colleague.

You need to provide the updated URL to him for that.



B) Click **Update**.

What this is not

AS-server is meant for a small number of viewers only.

Safety and security is not our concern.

Do not use this tool with critical infrastructure!

What if we need more?

You should install the project's player to a real web-server.

We recommend an off-the-shelf Linux server with Apache and MySQL and the usual administration tools like cPanel and phpMyAdmin.

See the Creator page for the **Creator Quick Starter Guide** and the **Creator Manual** for how to do this:

<http://www.applied-streetview.com/processing-program/>

Support

Hint:

**We can not help with your office's network configuration.
Get your IT departments help for that.**

**Support is provided for the newest program version only.
Check and update first if necessary.**

<http://www.applied-streetview.com/as-server/>

Support is available in English language only.

To report a malfunction, please use the **Menu** → **Help** → **Support** function of the program.
It automatically attaches the log file and allows you to attach additional files like screenshots of the issue you are facing.

You are welcome to send an additional email or to Skype us.

Contact:

E-Mail: support@applied-streetview.com

Skype ID: applied-streetview

Phone: +49 6103-372 7496

Streetview Technology GmbH
Pittlerstr. 53
63225 Langen
Germany