



APPLIEDSTREETVIEW

Online Recording Management

Check in on your cameras from
your office.

Table of Contents

[How to sign up](#)

[About](#)

[Home](#)

[Live](#)

[Overview](#)

[Map](#)

[Finished Recordings](#)

[Summary](#)

[Map](#)

[Controller App](#)

[My Fleet](#)

[Manage your cameras](#)

[Preferences](#)

[Troubleshooting](#)

[Manual](#)

[Support](#)

How to sign up

Open <https://fleet.applied-streetview.com/> and sign up.

To add a camera to your fleet account send an email with the cameras serial number and your fleet account's email to: support@applied-streetview.com.

About

[Online Fleet Management](#) is an online service provided by [Applied Streetview](#). It enables the recording manager to check in on a number of cameras while they are on the road, recording. From the PC in his office.

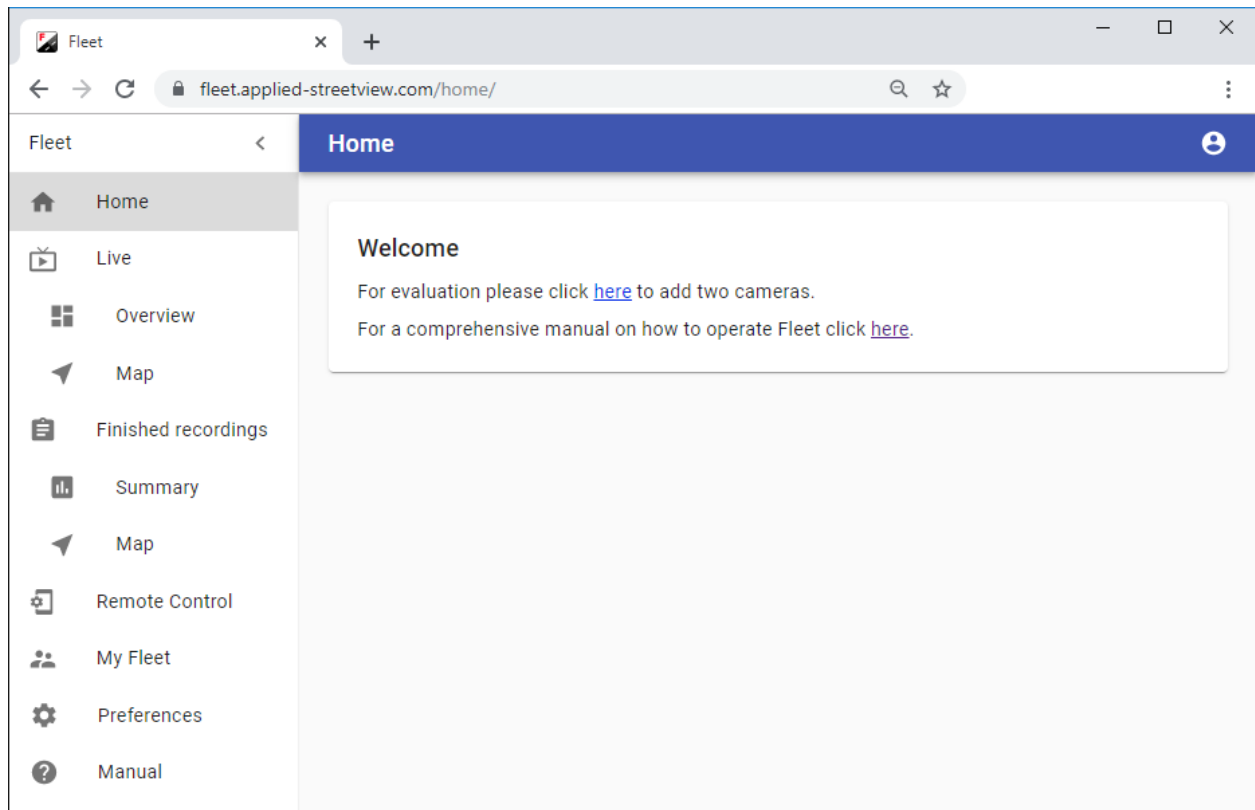
Main features

- Real-time map showing all camera positions and their current tracks.
- See and operate the Controller App exactly like the driver.
- Statistics and maps for finished recordings.

Home

The start screen.

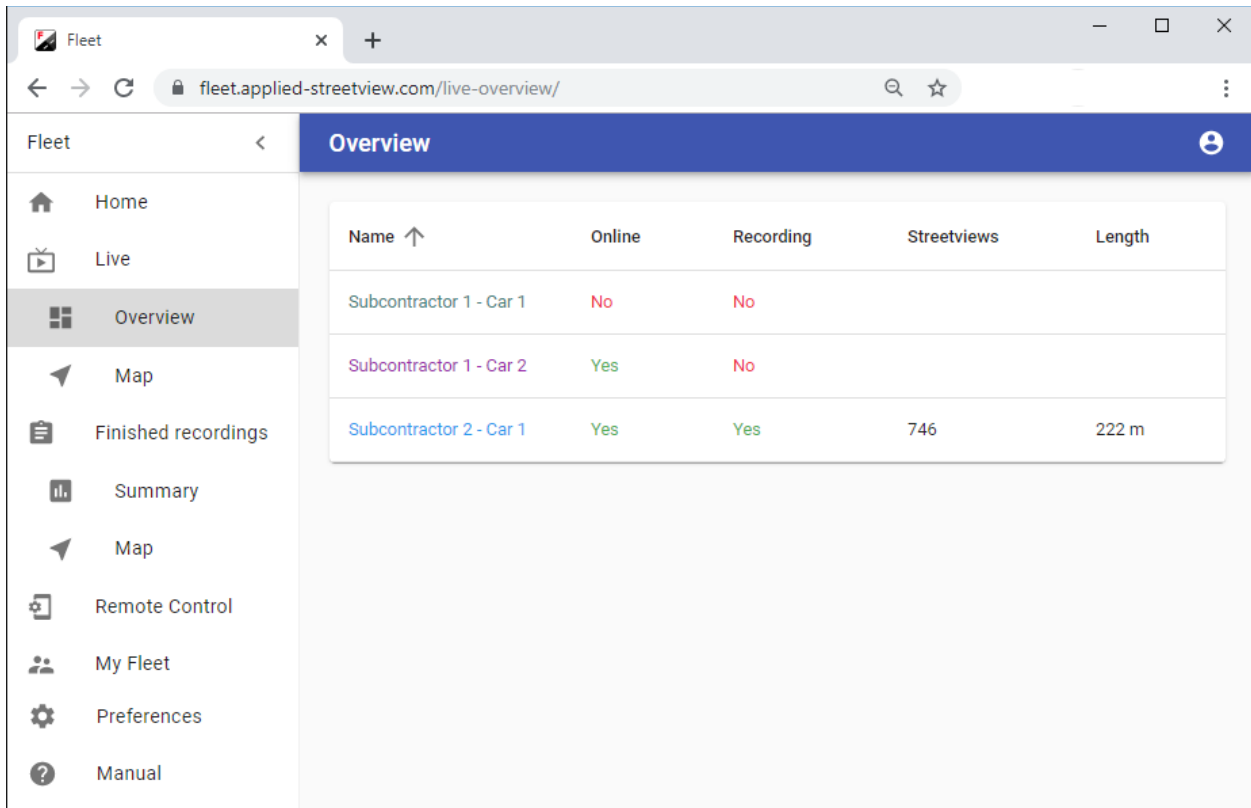
Loaded after logging in.



Live

Overview

- Shows which cameras are online.
- Shows if a camera is recording or not.
- Shows how many streetviews have been recorded.
- Shows how many kilometers have been recorded.

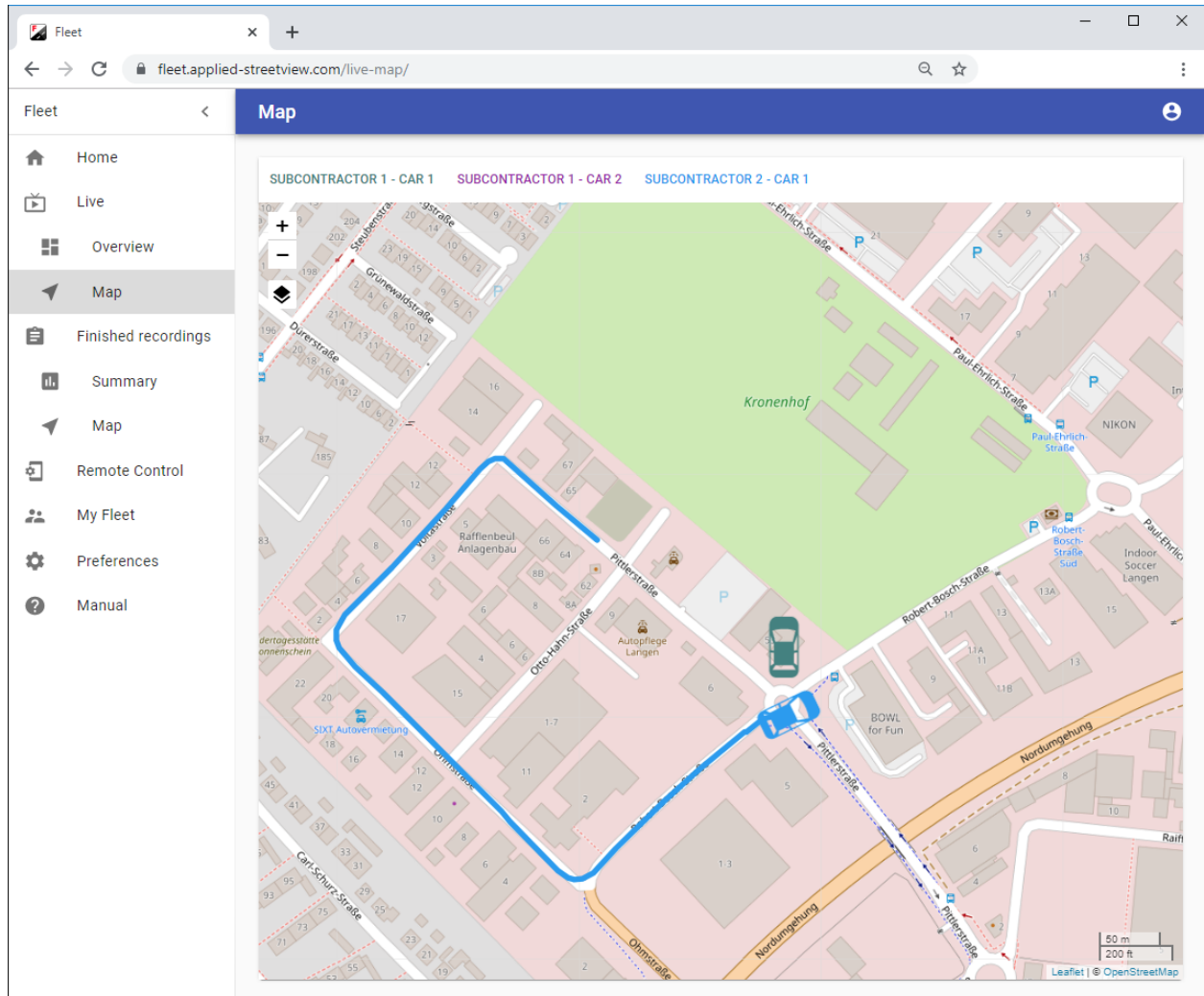


Name ↑	Online	Recording	Streetviews	Length
Subcontractor 1 - Car 1	No	No		
Subcontractor 1 - Car 2	Yes	No		
Subcontractor 2 - Car 1	Yes	Yes	746	222 m

Click on an **online** camera name to show it on the [Live-Map](#) page.

Map

- Shows the camera positions in real-time.
- Shows the current cameras tracks in real-time.

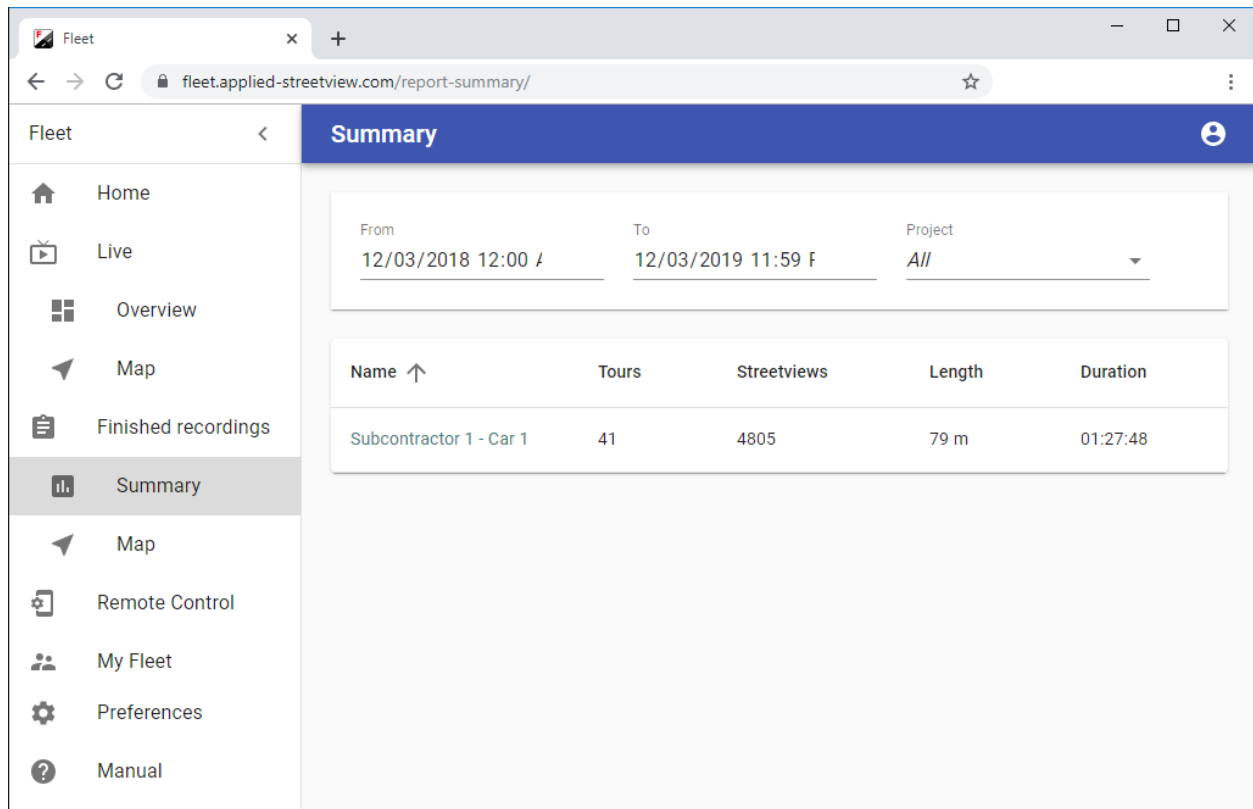


Finished recordings

Summary

Shows statistics for each camera:

- Camera name set in [My Fleet](#).
- Number of tours recorded.
- Number of streetviews recorded.
- Kilometers recorded.
- Time recorded.
- Apply filters.



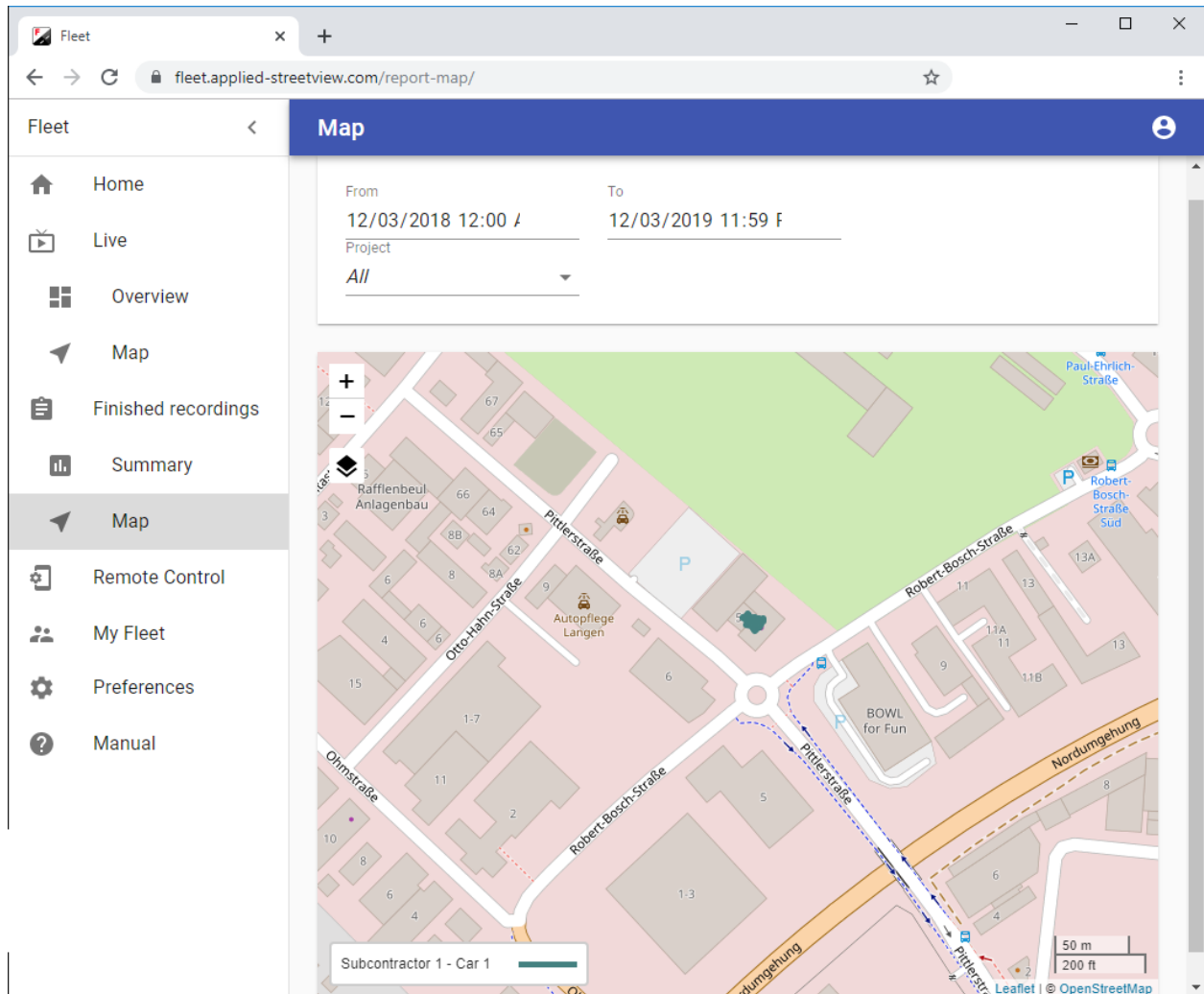
The screenshot shows a web browser window with the URL `fleet.applied-streetview.com/report-summary/`. The application interface has a sidebar on the left with a menu containing: Home, Live, Overview, Map, Finished recordings, Summary (highlighted), Map, Remote Control, My Fleet, Preferences, and Manual. The main content area is titled "Summary" and features a filter section with "From" (12/03/2018 12:00 /), "To" (12/03/2019 11:59 F), and "Project" (All). Below the filter is a table with the following data:

Name ↑	Tours	Streetviews	Length	Duration
Subcontractor 1 - Car 1	41	4805	79 m	01:27:48

Click on the camera name to show it on the [Finished recordings-Map](#) page.

Map

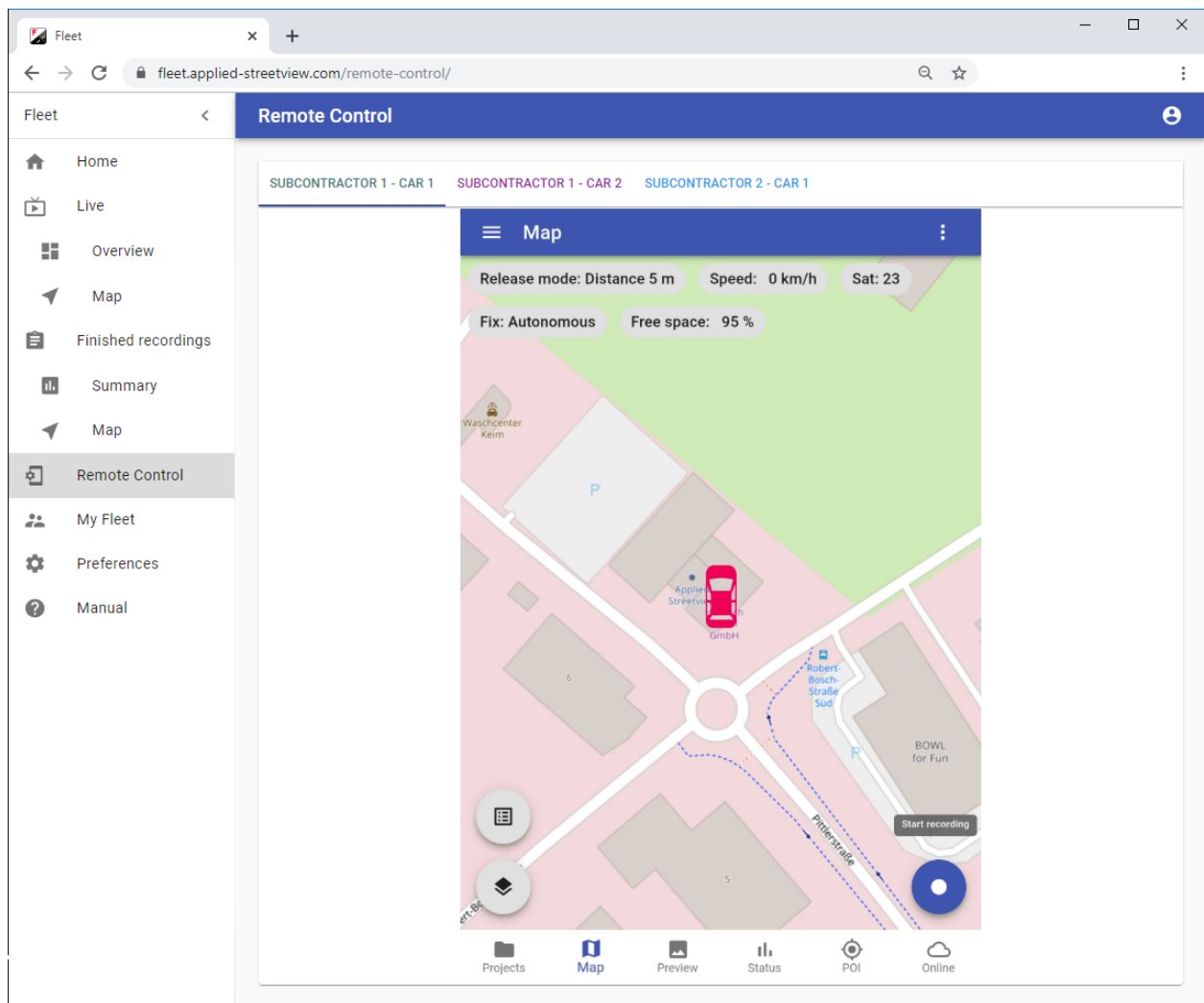
- Shows all finished tracks recorded.
- Apply filters.



Controller App

Remotely see and operate the Controller App on the tablet.

- Pick a camera that is online.
- See the Controller App exactly like the driver sees it.
- Control the Controller App with your PCs mouse and keyboard.



My Fleet

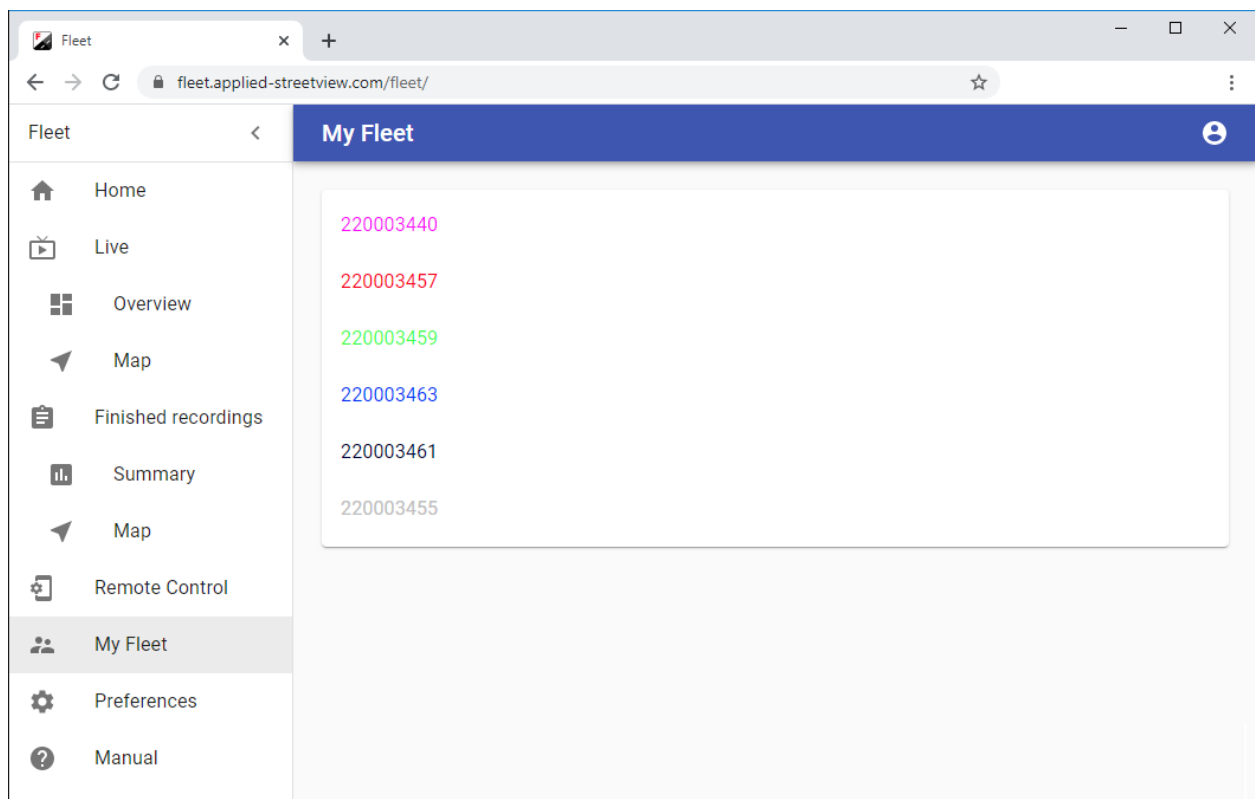
How to sign up

Open <https://fleet.applied-streetview.com/> and sign up.

To add a camera to your fleet account send an email with the cameras serial number and your fleet account's email to: support@applied-streetview.com.

Manage your cameras

- Change the camera's name. The default is the camera's serial number. It can be changed to anything. E.g. the cars number-plate or make and model or the drivers name.
- Change the track color. Each camera should have a different color.
- Keep track of the drivers name, phone number, the cars number-plate, make and model.



Edit a camera

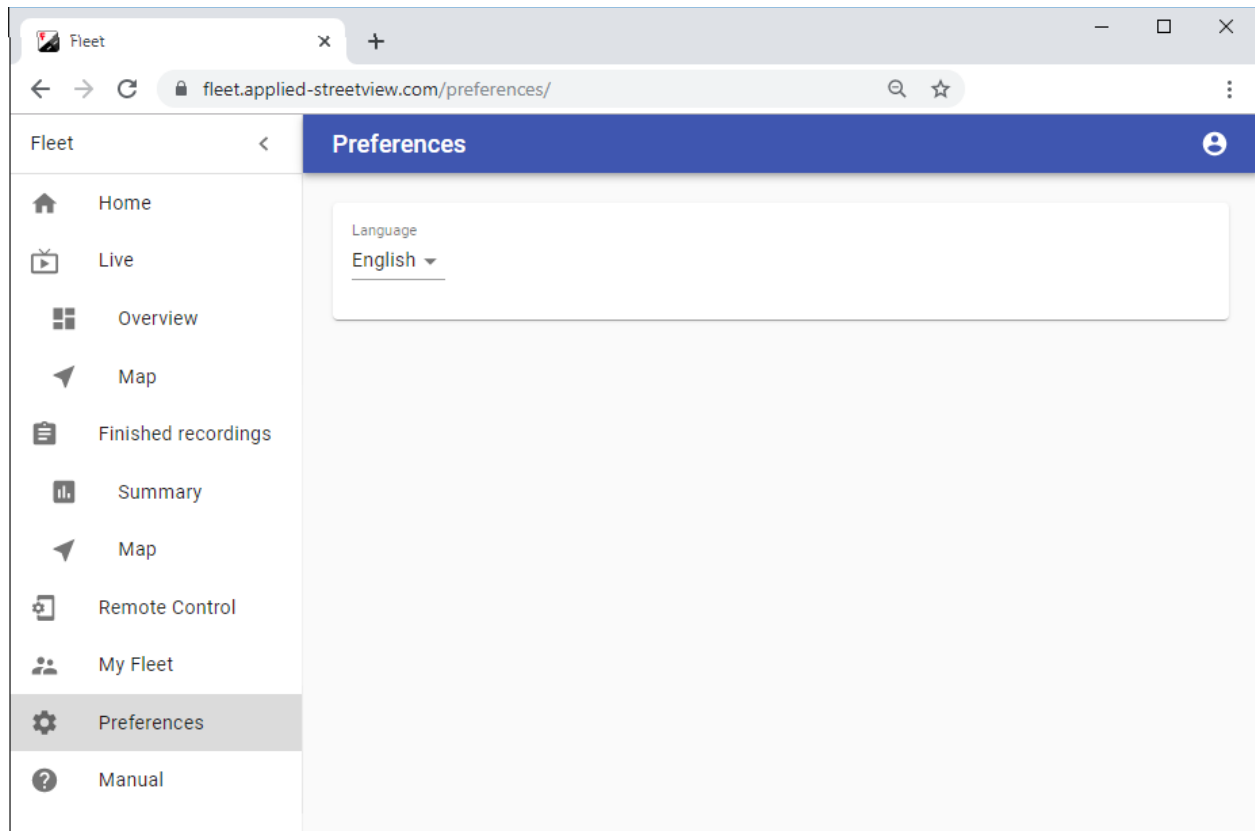
The screenshot shows a web browser window with the address bar displaying `fleet.applied-streetview.com/fleet-put/?`. The application interface has a dark blue header with the title "Edit camera" and a user profile icon. On the left is a sidebar menu with the following items: Home, Live, Overview, Map, Finished recordings, Summary, Map, Remote Control, My Fleet (highlighted), Preferences, and Manual. The main content area contains a form with the following fields:

- Serial number: 220003457
- Name: 220003457
- Color: A red color bar.
- Driver's name: (empty)
- Phone: (empty)
- Car's number plate: (empty)
- Car's make: (empty)
- Car's model: (empty)

At the bottom right of the form are two buttons: "CANCEL" and "SAVE".

Preferences

Change the language.



Troubleshooting

If the **Live** section of Fleet does not work it could be a firewall issue.
In this case ask your administrator to allow **web socket** connections to
fleet-ws.applied-streetview.com port 8000 TCP.

Manual

Opens [this manual](#) in a new window.

Support

Support is available in English language.

Contact

Helpdesk: support.applied-streetview.com

E-Mail: support@applied-streetview.com

Skype ID: applied-streetview

Phone: +49 6103 - 37 27 494

Streetview Technology GmbH
Pittlerstr. 53
63225 Langen
Germany