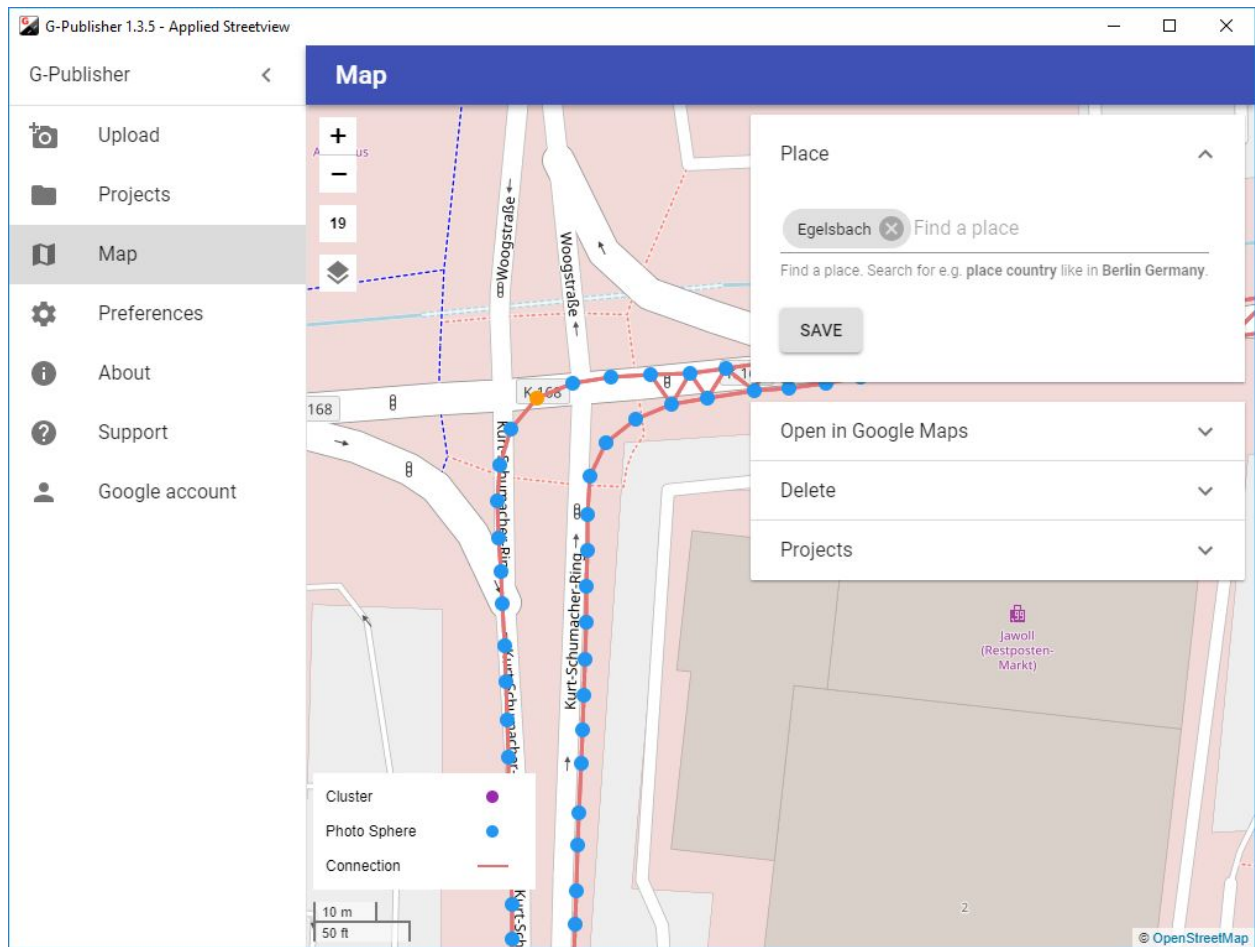




## G-Publisher

Manual  
for version 1.6.0



## Table of Contents

[What it looks like on Google Maps](#)

[Alternatives by Applied Streetview](#)

[Instant Player](#)

[Web Player](#)

[Android Player](#)

[Streetviews](#)

[Workflow](#)

[Pages](#)

[Upload](#)

[Projects](#)

[Map](#)

[Map Layers](#)

[Keyboard shortcuts](#)

[Functionality](#)

[Preferences](#)

[About](#)

[Support](#)

[Google Account](#)

[Google](#)

[Google Delays](#)

[Google Policies](#)

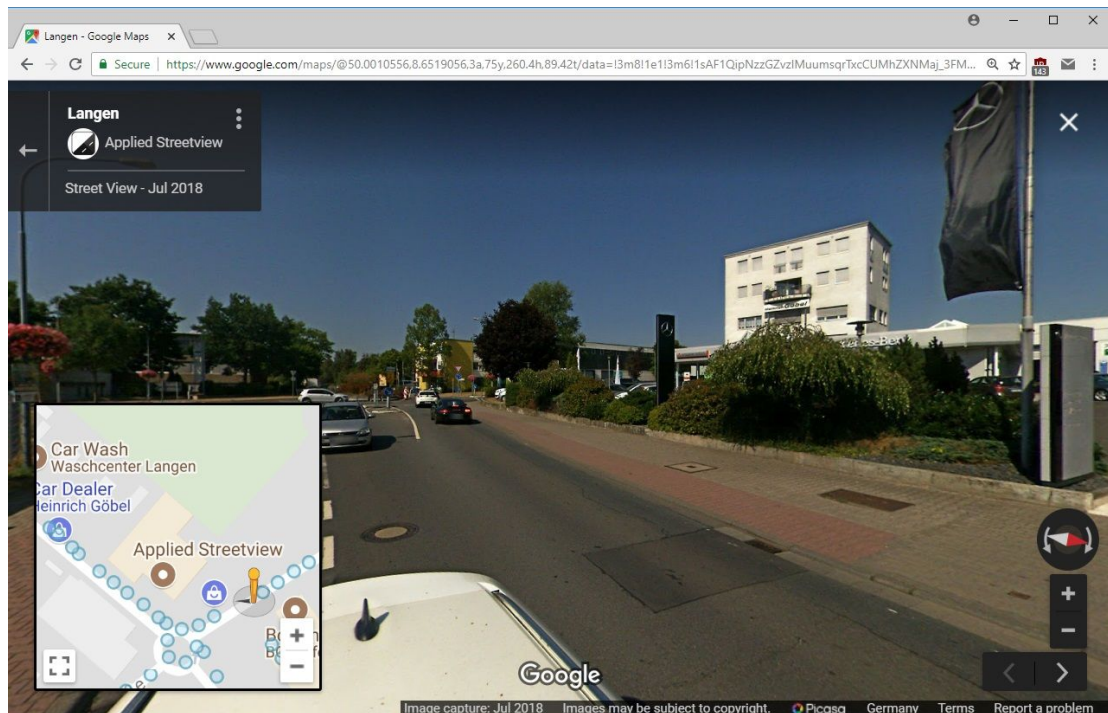
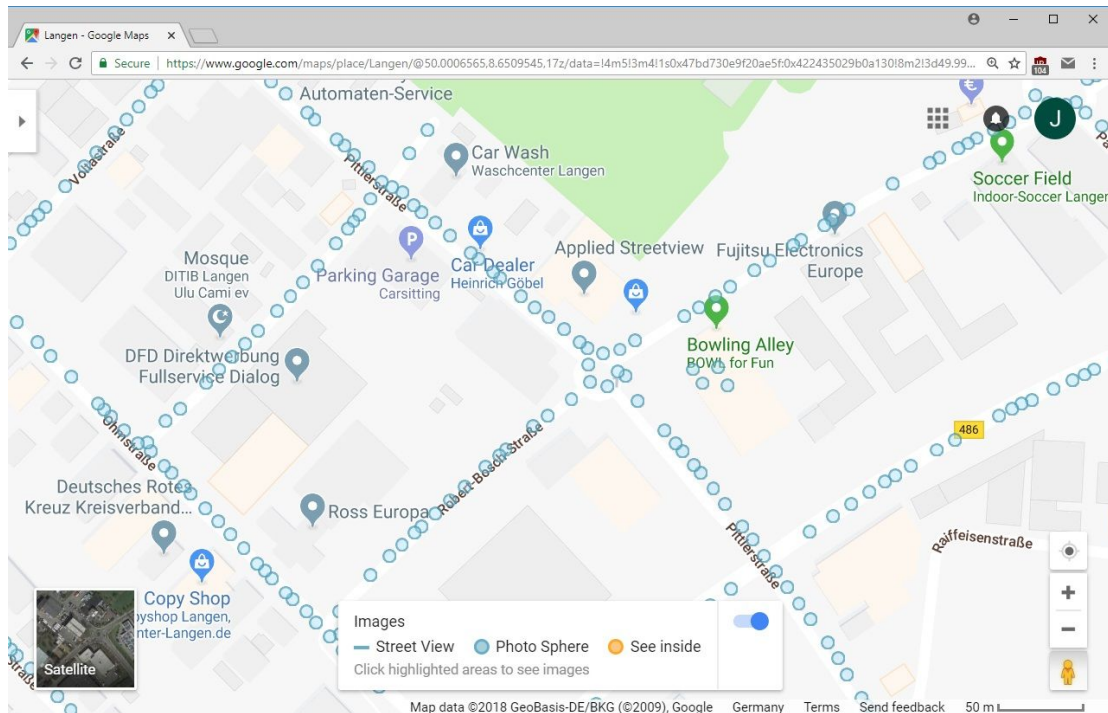
[Google Limits](#)

[Google Errors](#)

[Support](#)

[Consulting](#)

# What it looks like on Google Maps



G-Publisher is tailor-made for footage recorded by the [Original 360 Camera](#) made by Applied Streetview.

# Alternatives by Applied Streetview

## Instant Player

Shortest turnaround time ever.

Just configure your project in a few minutes and copy all your recorded footage to a Windows 10 PC with NVIDIA GTX 1080 graphics card.

Instant Player processes the footage on the fly as needed.

Project to be created by the [Creator 3](#) program.

For Windows 10.

Give [Instant Player](#) a free try.

## Web Player

For your own website.

Embed the player with your pages.

For LAMP servers.

Created by the [Creator 3](#) program.

Give the [Web Player](#) a free try.

## Android Player

Works without Internet. 100% offline.

Ideal for sales demos and for tactical teams.

Project created by the [Creator 3](#) program.

Give the [Android Player](#) a free try.

## Streetviews

For your own custom workflow.

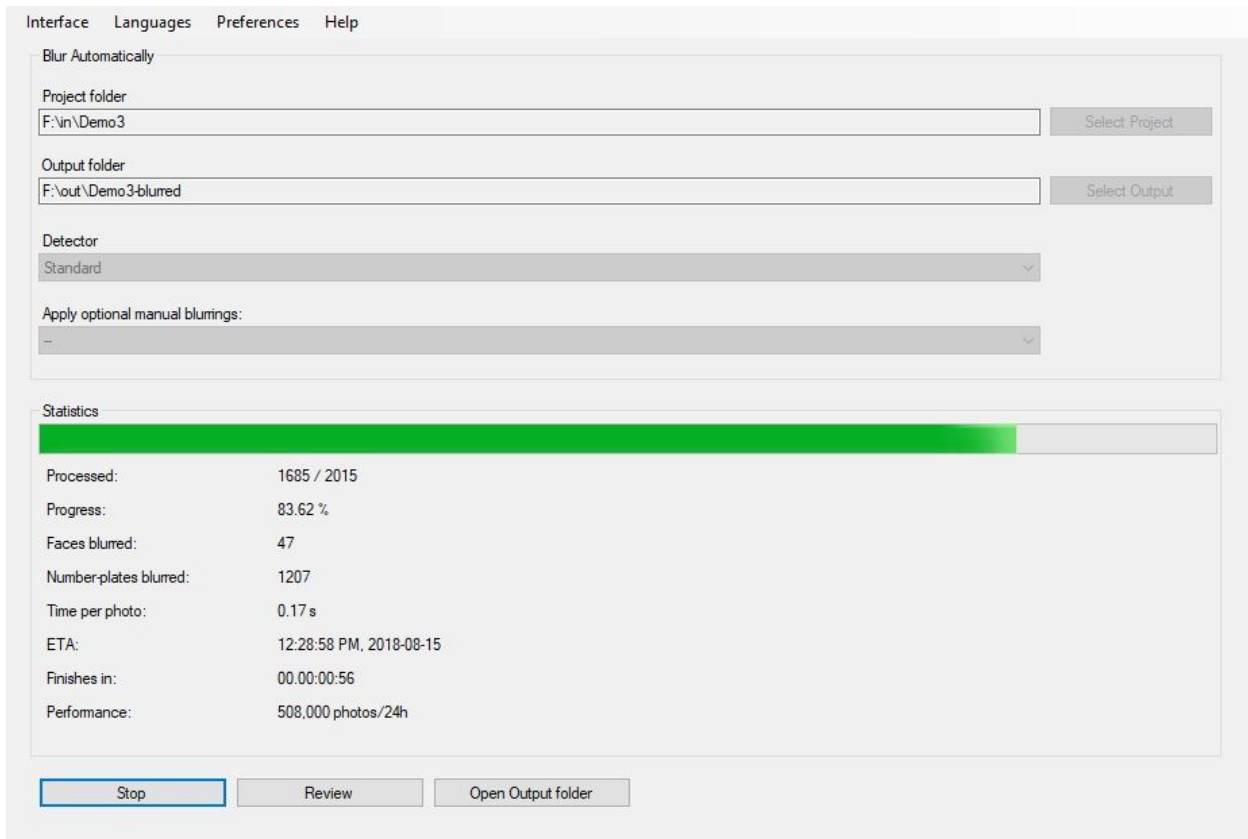
Created by the [Creator 3](#) program.

We are available for hire to help with the integration.

[Get in touch](#).

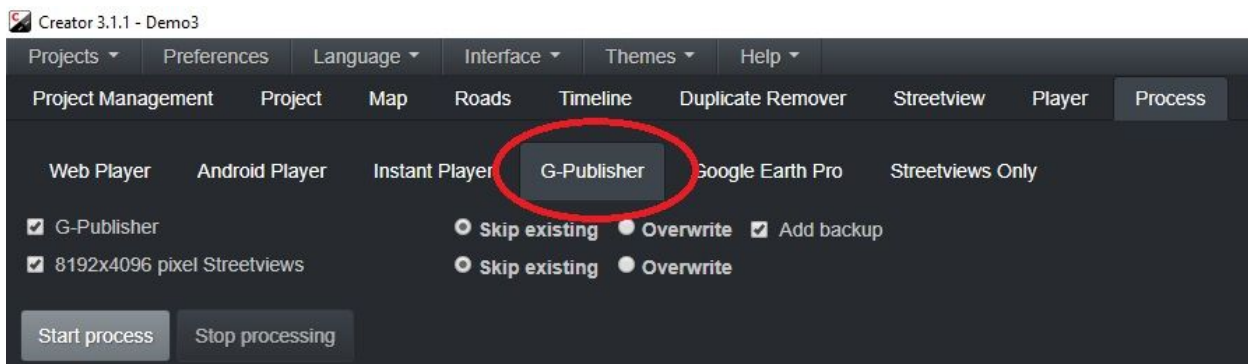
# Workflow

Step 1) Automatically blur faces and licence plates with [Privacy Keeper](#).



Step 2) Create Streetviews with [Creator 3](#).

Do not apply Watermarks.



Step 3) Create a [Google account](#) (once only).

Step 4) Upload your Streetviews to Google Maps with **G-Publisher**.

# Pages

## Upload

G-publisher

<

Upload

Projects

Map

Preferences

About

Support

Google account

Upload

Remaining: 250/263 streetviews

Time to finish: 00:15:45

Performance: 3.54 sec/streetview (21,600 streetviews/24h)

ETA: 2018-07-20 14:30:33

STOP

2018-07-20 14:15:19: Uploaded S:\as\out\Demo3\panoramas\camera-20180408-140357-000000005.jpg  
as Photo Sphere CAoSLEFGMVFcE5XVTEzWk9tN1NwNmFEeWFmTkxjdkw2dW1LWWozel9IVGV5TTdE

2018-07-20 14:15:23: Uploaded S:\as\out\Demo3\panoramas\camera-20180408-140357-000000006.jpg  
as Photo Sphere CAoSLEFGMVFcE1LUWF3UnRQdG9MTmFnb3diZXFSGS5zQkFjWmtPTW9YU1dyWkMy

2018-07-20 14:15:27: Uploaded S:\as\out\Demo3\panoramas\camera-20180408-140357-000000007.jpg  
as Photo Sphere CAoSLEFGMVFcE9OUGVSNWwxcUZta0JuZjA4TjNoWi0zZk1HV2pzQnJSRjFKdGIT

2018-07-20 14:15:30: Uploaded S:\as\out\Demo3\panoramas\camera-20180408-140357-000000008.jpg  
as Photo Sphere  
CAoSLEFGMVFcE9WUDRPMnVFeXU0MzRaQU2WGpzc0hFVDNjVDRwM3E2aE83NVJH

2018-07-20 14:15:34: Uploaded S:\as\out\Demo3\panoramas\camera-20180408-140357-000000009.jpg  
as Photo Sphere CAoSLEFGMVFcFBZMjhCSnZFLUdfQnpDOE9ibW5Sd1VncGRRcXNDT2F3eG5LbEFO

2018-07-20 14:15:37: Uploaded S:\as\out\Demo3\panoramas\camera-20180408-140357-000000054.jpg  
as Photo Sphere CAoSLEFGMVFcE1xNC1OZTY3VjYxUEFQdkFVN3VfYU1qQWdNdfBhNkNIQ3Awa3Fa

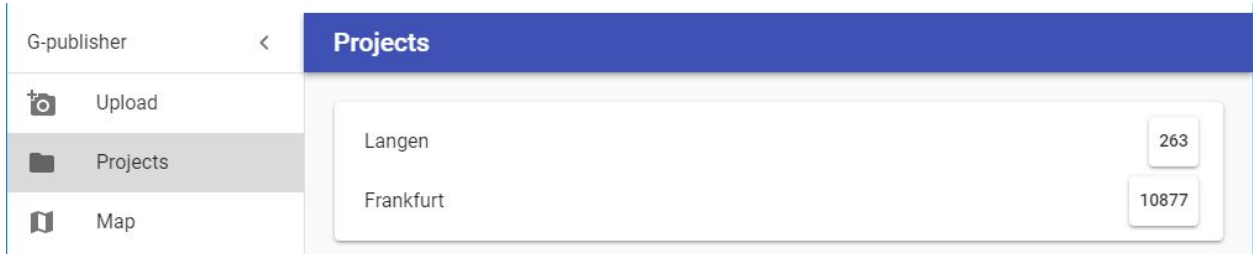
2018-07-20 14:15:41: Uploaded S:\as\out\Demo3\panoramas\camera-20180408-140357-000000055.jpg  
as Photo Sphere CAoSLEFGMVFcE9pMkM1dkJ4YkITZ2U3akNQZWdCZDVsvTQ3elAtbkdnMEVCYTRr

2018-07-20 14:15:44: Uploaded S:\as\out\Demo3\panoramas\camera-20180408-140357-000000056.jpg  
as Photo Sphere CAoSLEFGMVFcE0xYkZYZGJUvXR3enVxc3ZJbGN2TVNCVzhxaUFpUjJOTGxwRUd6

2018-07-20 14:15:48: Uploaded S:\as\out\Demo3\panoramas\camera-20180408-140357-000000057.jpg  
as Photo Sphere CAoSLEFGMVFcE5CaEdmdEpEZH4R0FFN1pVYkFSdDNuMFJrNy1ScWxtD3Fwdnlu

## Projects

All Photo Spheres with the same **Place** are called a **Project**.

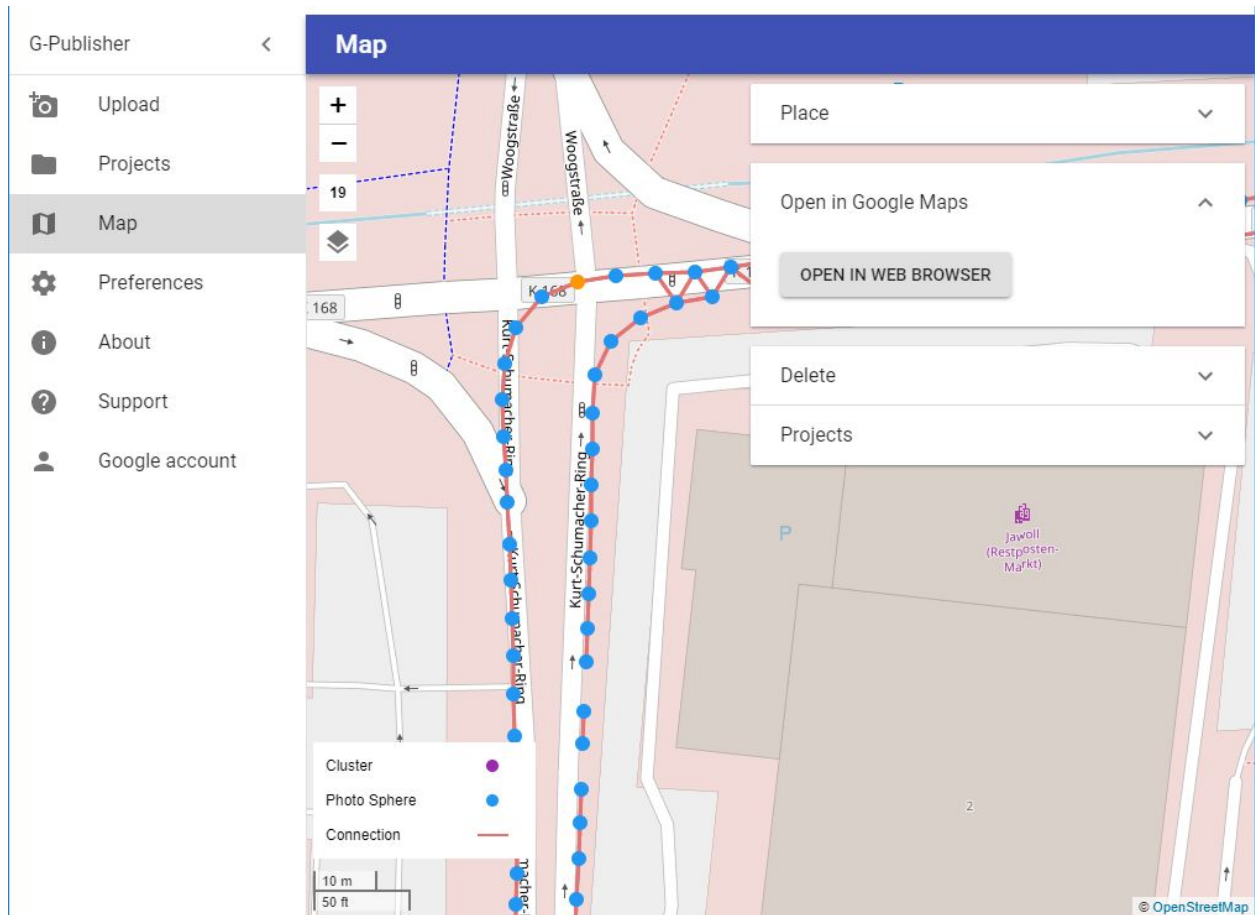


Displays a list of all your projects.

Click a project name to zoom in on the project on the **Map** page.

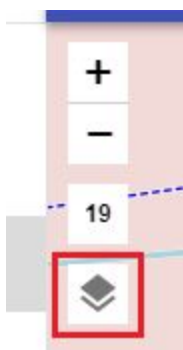


# Map



## Map Layers

Over 40 different map providers are available to choose from.  
Plus your own map tiles from a local folder or a URL.





## Keyboard shortcuts

ESC	Clear all selections
CTRL+A	Select all Photo Spheres visible on the map
Click a blue dot	Select a Photo Sphere
Hold CTRL + click a blue dot	Add a Photo Sphere to the current selection
Shift + draw rectangle	Select all the Photo Spheres in the rectangle
Hold CTRL + SHIFT + draw rectangle	Add all the Photo Spheres in the rectangle to the current selection
DELETE	Photo Spheres: Delete all selected Photo Spheres
DELETE	Connection: Delete all selected Connection
INSERT	Connection: Add a connection between the selected two Photo Spheres
Arrow keys: Up, Down, Left, Right	Scroll the map.

## Functionality

### For selected Photo Spheres

- **Place:** Change the Place for the selected Photo Spheres.
- **Open in Google Maps:** Open a blue Photo Sphere in Google Maps.  
(Not available for purple cluster icons.)
- **Delete:** Delete the selected Photo Sphere(s)
- **Add connection:** Manually create connections between two blue Photos Spheres.
- **Add connections automatically:** Automatically create connections between the selected Photo Spheres that are N meters apart.

### Projects

Displays a list of all your projects. Click a project to zoom in on it.

Click on the  button to additionally select all the Photo Spheres of that project.

## Connections

Connections are to navigate from one Photo Sphere to another.

A connection is displayed as a clickable arrow when viewing the Photo Sphere in Google Maps.

An orange line between two Photo Spheres indicates they are connected.

In addition to the automatic connections from the Upload page you can

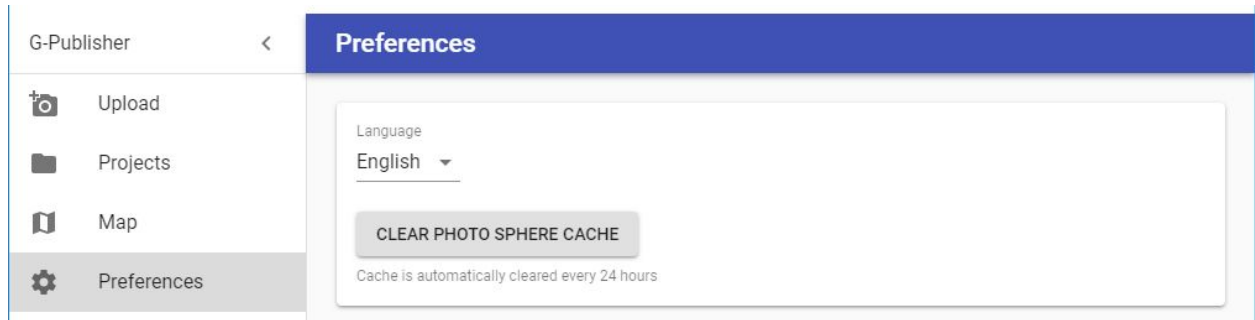
- Select a orange connection and delete it.
- Manually create connections between two blue Photos Spheres.

Quote from

Maps User Contributed Content Policy Help -> Format Specific Criteria -> [360 Photos](#)

- When multiple 360 photos are published to one area, connections between them may be automatically generated. Whether your connections were created manually or automatically, we may adjust, remove, or create new connections — and adjust the position and orientation of your 360 photos — to ensure a realistic, connected viewing experience
- When connecting 360 photos, ensure that any links you create are between nearby vantage points. Do not attempt to create connections that will disorient those exploring your connected 360 photos for the first time.

# Preferences



## Language

Change the language.

English, German and Romanian are supported.

## Clear Photo Sphere cache

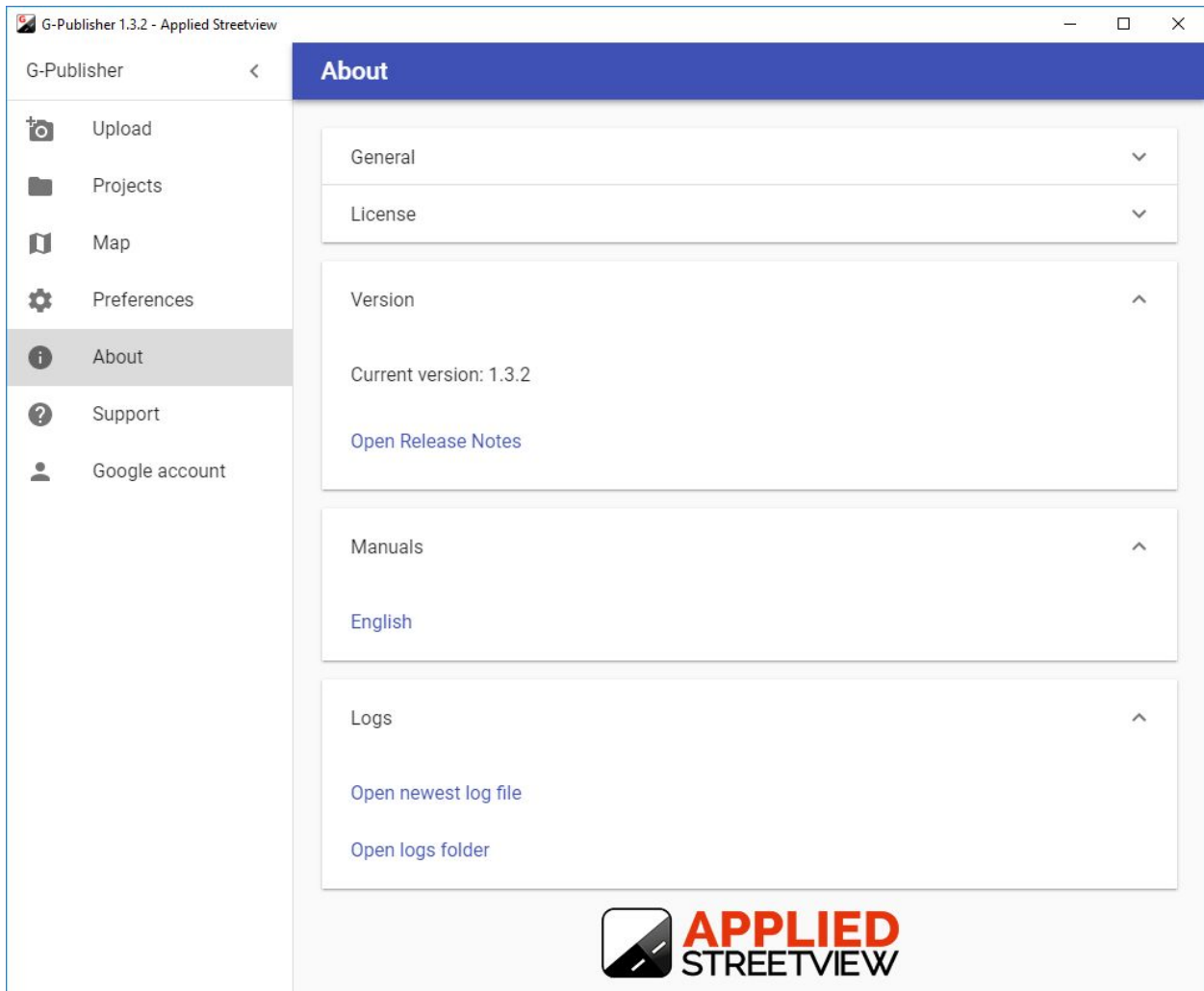
Clears the Photo Sphere cache.

When opening the **Projects** or **Map** page a fresh Photo Sphere list it will be downloaded from the Google Street View Publish API.

The cache is automatically cleared every 24 hours.

The cache is automatically cleared when updating G-Publisher.

# About




When opening the About page G-Publisher automatically checks for a new release.  
When starting G-Publisher it checks for a new release.


We strongly recommend to update to the newest release.


# Support


G-publisher <


Support


 Upload

 Map

 Preferences

 About

 Support

 Google account

Contact person

John Doe

Phone

+1 234 56789

Email

JohnDoe123@yourcompany.com

Company

Testcompany Ltd.


Skype

live:JohnDoe123

Subject

Steps to Reproduce

Attach files

CHOOSE FILE 

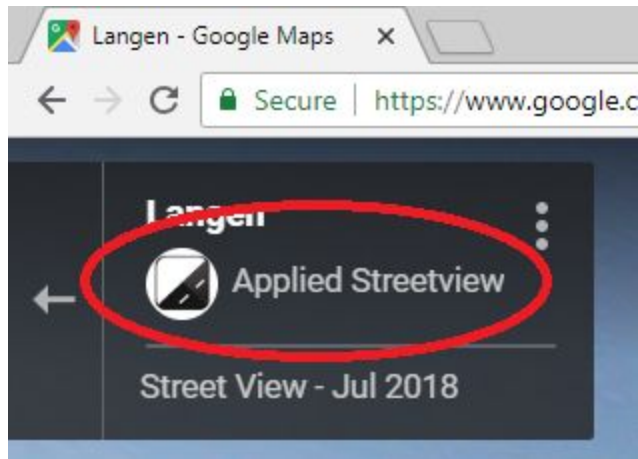
Error logs will be automatically attached.

SEND

When you use the [Support](#) page to contact us the newest 3 logs are automatically attached.

## Google Account

What your Google account will be displayed like by Google maps:



### Display

Icon

Applied Streetview

### Explanation

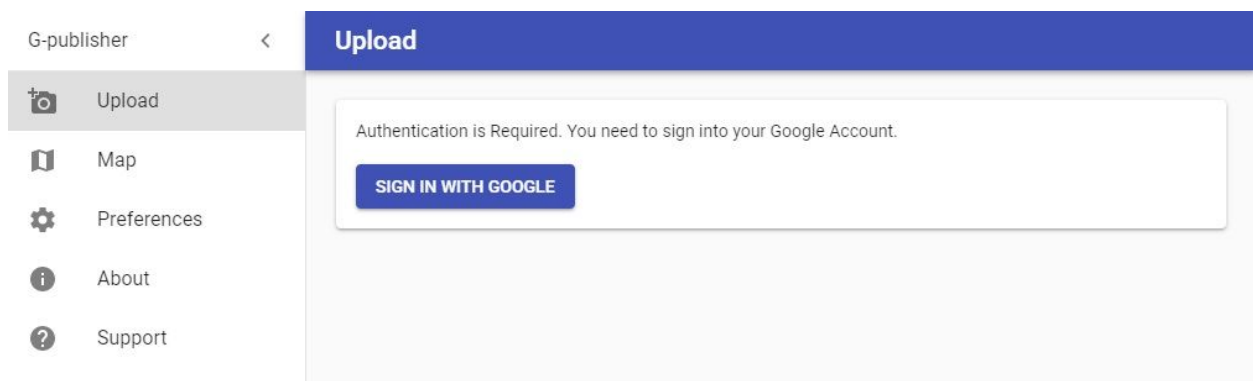
**Icon** of your Google account

**First-Name Last-Name** of your Google account

Create a new Google Account here:

<https://accounts.google.com/signup/v2/webcreateaccount?hl=en&flowName=GlifWebSi&flowEntry=SignUp>

Then Authenticate with your own Google account:



 Sign in with Google

## Choose an account

to continue to [Publish streetviews](#)



Applied Streetview  
applied.streetview@applied-streetview.com



Use another account

To continue, Google will share your name, email address, and profile picture with Publish streetviews.

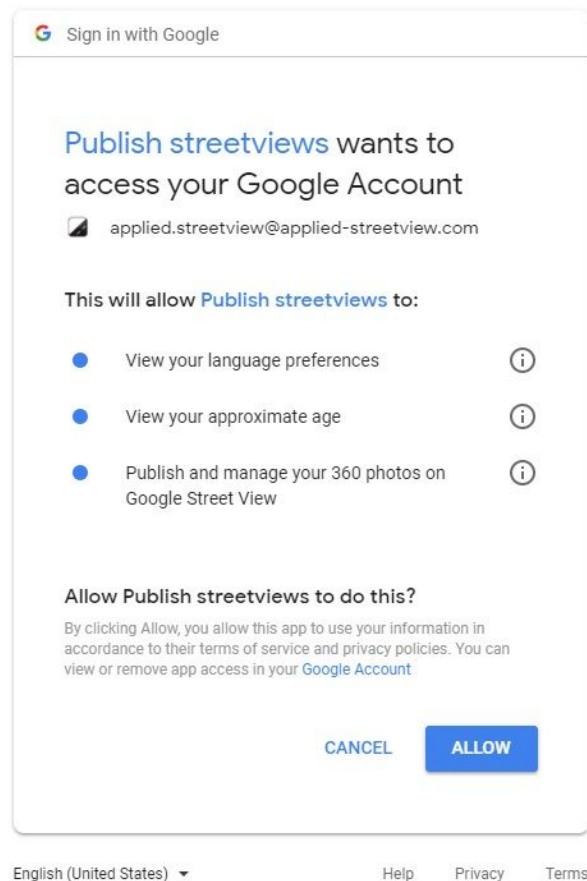
English (United States) ▼

[Help](#)

[Privacy](#)

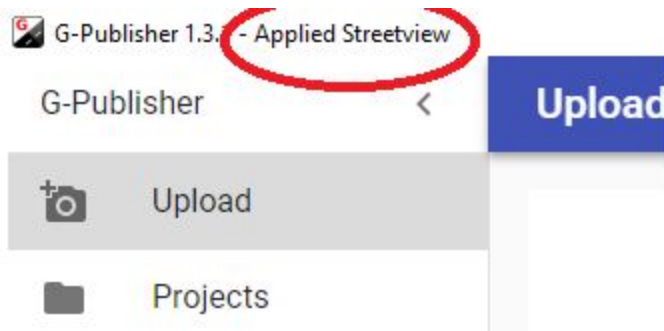
[Terms](#)



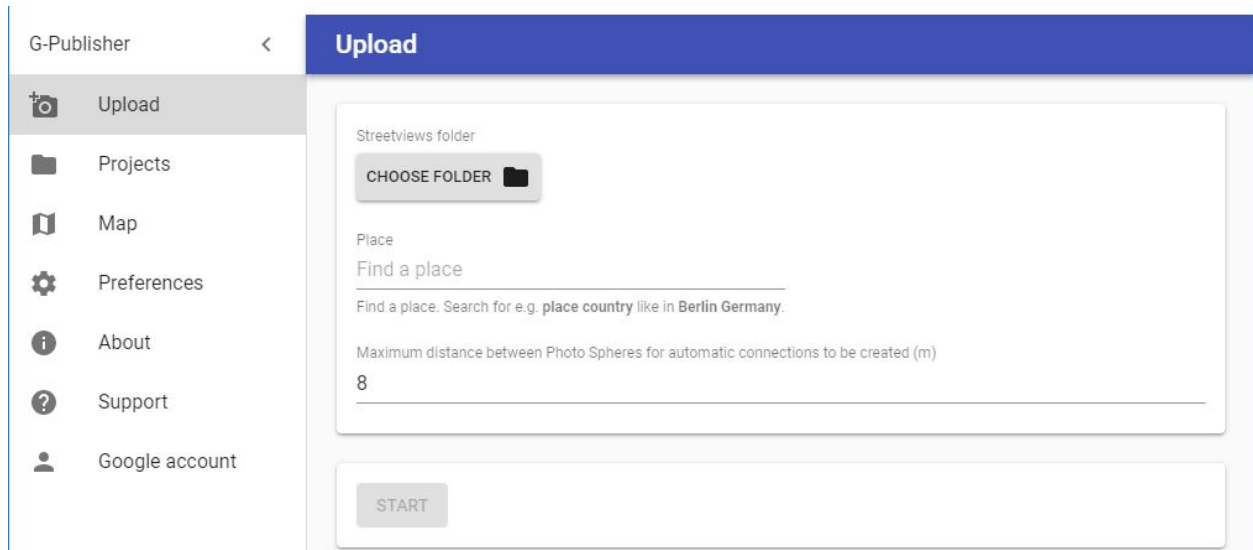


Done.

You can switch between many Google accounts, working on behalf of your customers. G-publisher shows the active Google account in the Windows title:



Start uploading your Streetviews as Photo Spheres.  
Pick a folder with your streetviews and set a Place. E.g. the cities name.



The screenshot shows the 'G-Publisher' application interface. On the left is a sidebar with a menu containing 'Upload' (highlighted), 'Projects', 'Map', 'Preferences', 'About', 'Support', and 'Google account'. The main area has a blue header labeled 'Upload'. Below the header, there is a form with the following fields:

- Streetviews folder:** A button labeled 'CHOOSE FOLDER' with a folder icon.
- Place:** A text input field with the placeholder 'Find a place'.
- Find a place:** A hint text below the input field: 'Find a place. Search for e.g. place country like in Berlin Germany.'
- Maximum distance between Photo Spheres for automatic connections to be created (m):** A text input field with the value '8'.

At the bottom of the form is a 'START' button.

# Google

## Google Delays

There is a delay for your contributions to become visible to the public on the Google Maps page.

The delay can be 30 seconds to 10 hours. Maybe a day.

Just wait for Google to update. **Do NOT immediately try to delete and upload again.**

Be aware that the Google API G-Publisher uses and the Google Maps website available to the public are not in synch. Usually the Google Maps website is behind.

Again, please wait a day.

If you think something went wrong, go to G-Publisher's [About](#) page and check the logs with **Open latest log file** or **Open logs folder**.

If you use the [Support](#) page to contact us the newest 3 logs are automatically attached.

## Google Policies

A selection of Google policies:

Maps User Contributed Content Policy Help Center

<https://support.google.com/contributionpolicy/#topic=7422769>

Image Acceptance & Privacy Policies

<https://www.google.com/intl/en/streetview/privacy/>

Google Terms of Service

<https://policies.google.com/terms>

Google Maps/Earth Additional Terms of Service

[https://www.google.com/help/terms\\_maps.html](https://www.google.com/help/terms_maps.html)

## Google Limits

We lifted all limits for G-Publisher. You should never experience a limitation.

For the details see: <https://developers.google.com/streetview/publish/limits>

The number of Photo Spheres you can publish per day depends on the speed and quality of your Internet connection and the workload of the Google infrastructure in your part of the world.

Our performance is about 6 seconds for uploading a single Photo Sphere.

That is about 14.000 Photo Spheres in 24 hours.

## Google Errors

### **Upload**

In case there is an upload error the same upload will be tried again after 10 seconds.

In case of another error the same upload will be tried again after 60 seconds.

Then uploading continues with the next streetview.

All errors are logged.

### **Map - Updating Places and Connections**

In case there is an error it will be tried again after 10 seconds.

In case of another error it will be tried again after 60 seconds.

All errors are logged.

# Support

Support is available in English language.  
Support is provided for the newest G-Publisher version only.

Check for a new release first:

**Help -> About** page of G-Publisher

or

<http://www.applied-streetview.com/programs/g-publisher>

## Contact Support

**Helpdesk:** [support.applied-streetview.com](http://support.applied-streetview.com)

**E-Mail:** [support@applied-streetview.com](mailto:support@applied-streetview.com)

**Skype ID:** applied-streetview

**Phone:** +49 6103 - 372 7494

# Consulting

We are available for hire for consulting.

Please contact:

**E-Mail:** [jan.martin@applied-streetview.com](mailto:jan.martin@applied-streetview.com)

**Skype ID:** applied-streetview

**Phone:** +49 6103 - 372 7494