



G-Publisher

Manual
for version 1.6.2

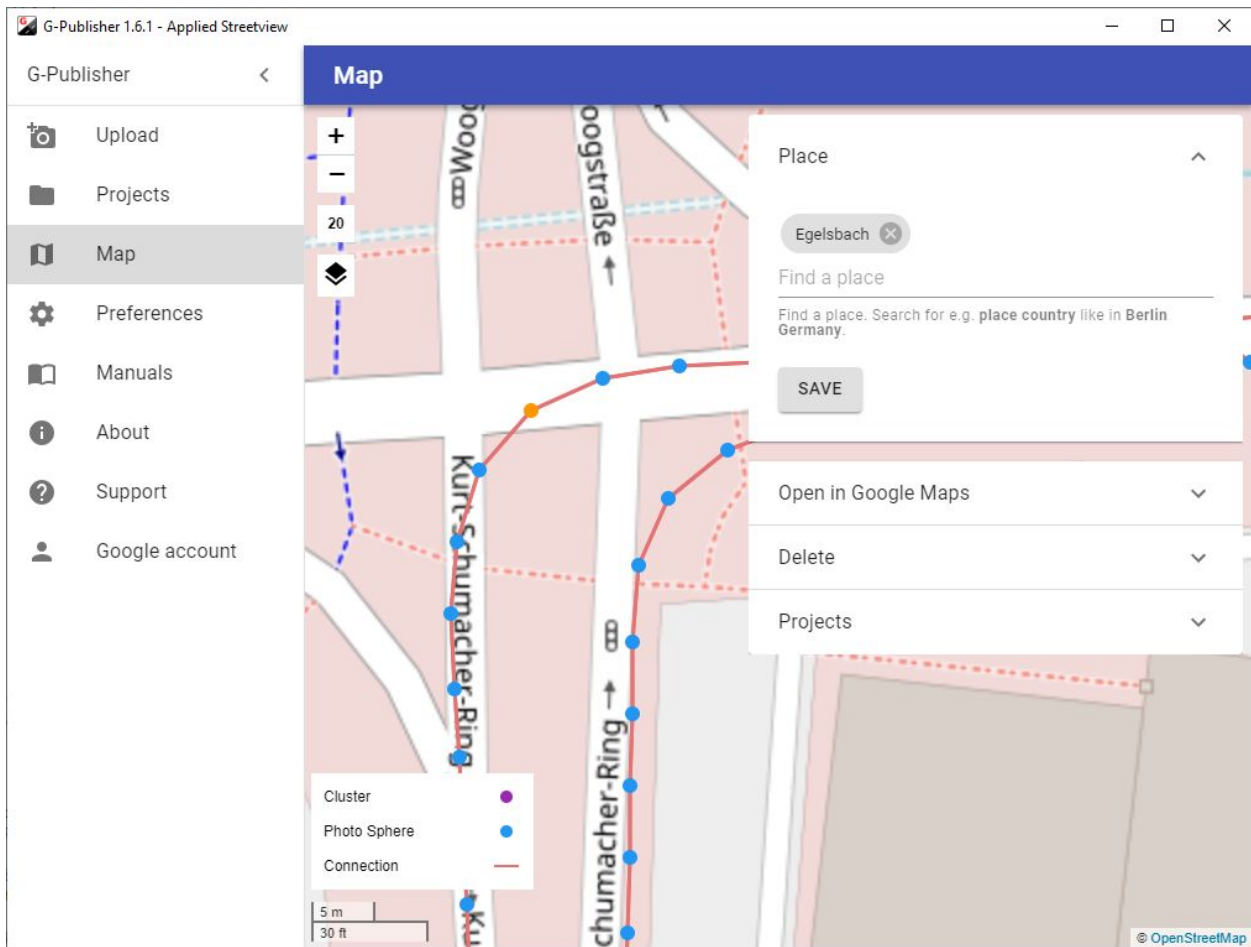


Table of Contents

[What it looks like on Google Maps](#)

[Alternatives by Applied Streetview](#)

[Instant Player](#)

[Web Player](#)

[Android Player](#)

[Streetviews](#)

[Workflow](#)

[Pages](#)

[Upload](#)

[Projects](#)

[Map](#)

[Map Layers](#)

[Keyboard shortcuts](#)

[Functionality](#)

[Preferences](#)

[About](#)

[Support](#)

[Google Account](#)

[Google](#)

[Google Delays](#)

[Google Policies](#)

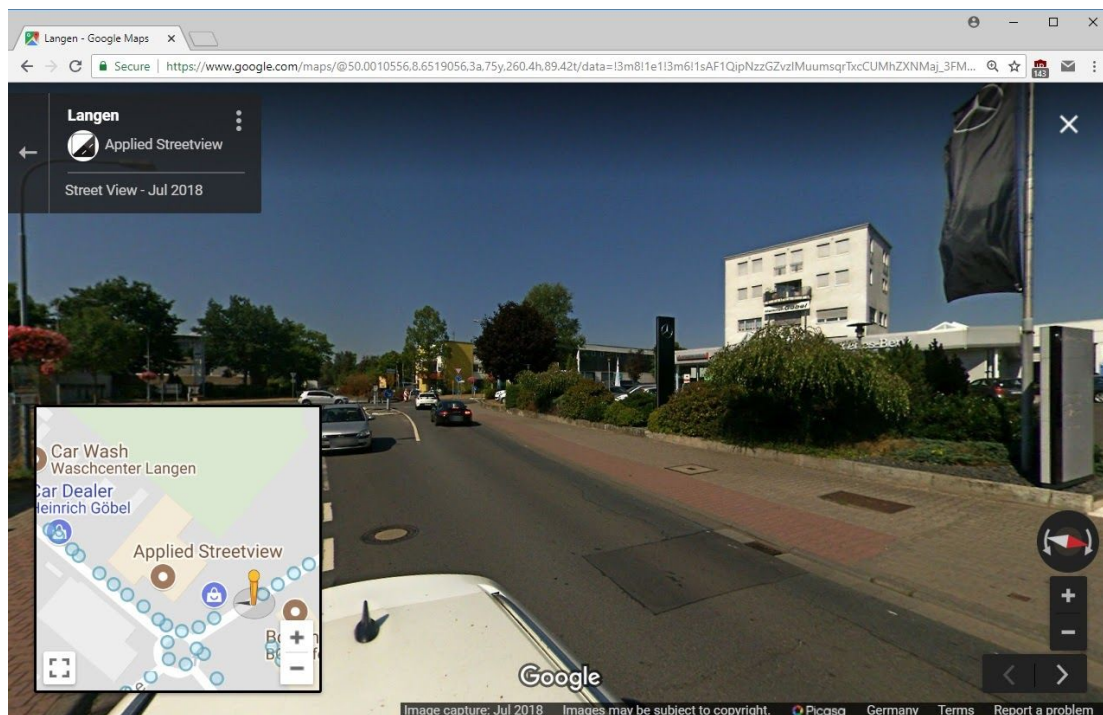
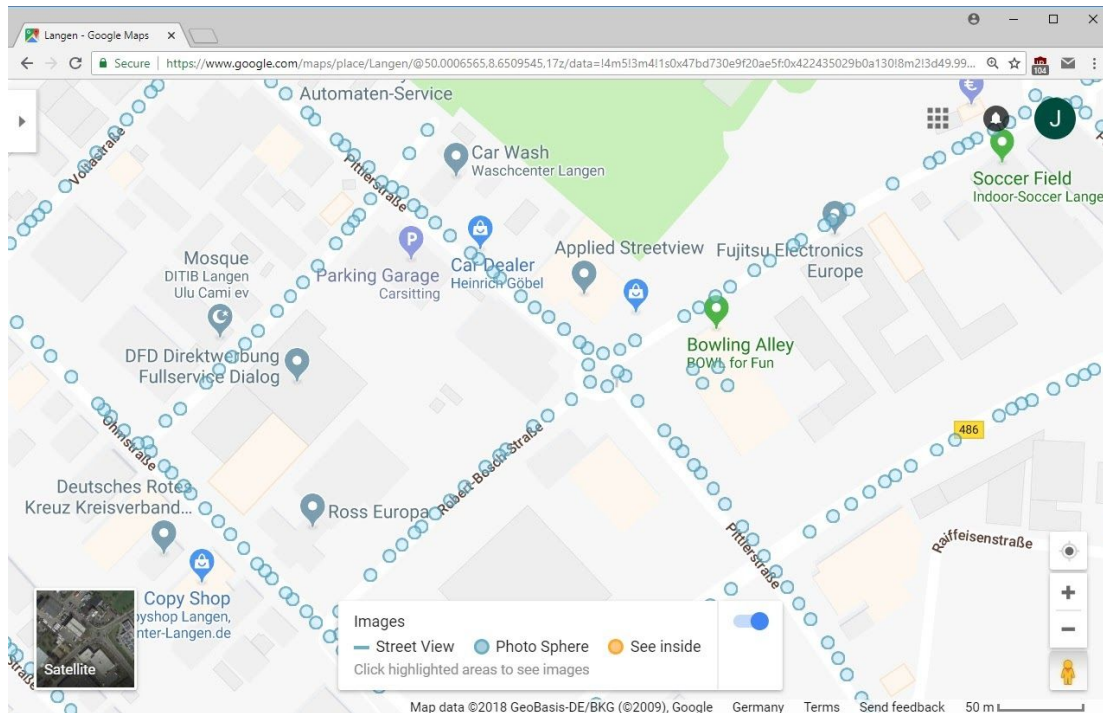
[Google Limits](#)

[Google Errors](#)

[Support](#)

[Consulting](#)

What it looks like on Google Maps



G-Publisher is tailor-made for footage recorded by the [Original 360 Camera](#) made by Applied Streetview.

Alternatives by Applied Streetview

Instant Player

Shortest turnaround time ever.

Just configure your project in a few minutes and copy all your recorded footage to a Windows 10 PC with NVIDIA GTX 1080 graphics card.

Instant Player processes the footage on the fly as needed.

Project to be created by the [Creator 3](#) program.

For Windows 10.

Give [Instant Player](#) a free try.

Web Player

For your own website.

Embed the player with your pages.

For LAMP servers.

Created by the [Creator 3](#) program.

Give the [Web Player](#) a free try.

Android Player

Works without Internet. 100% offline.

Ideal for sales demos and for tactical teams.

Project created by the [Creator 3](#) program.

Give the [Android Player](#) a free try.

Streetviews

For your own custom workflow.

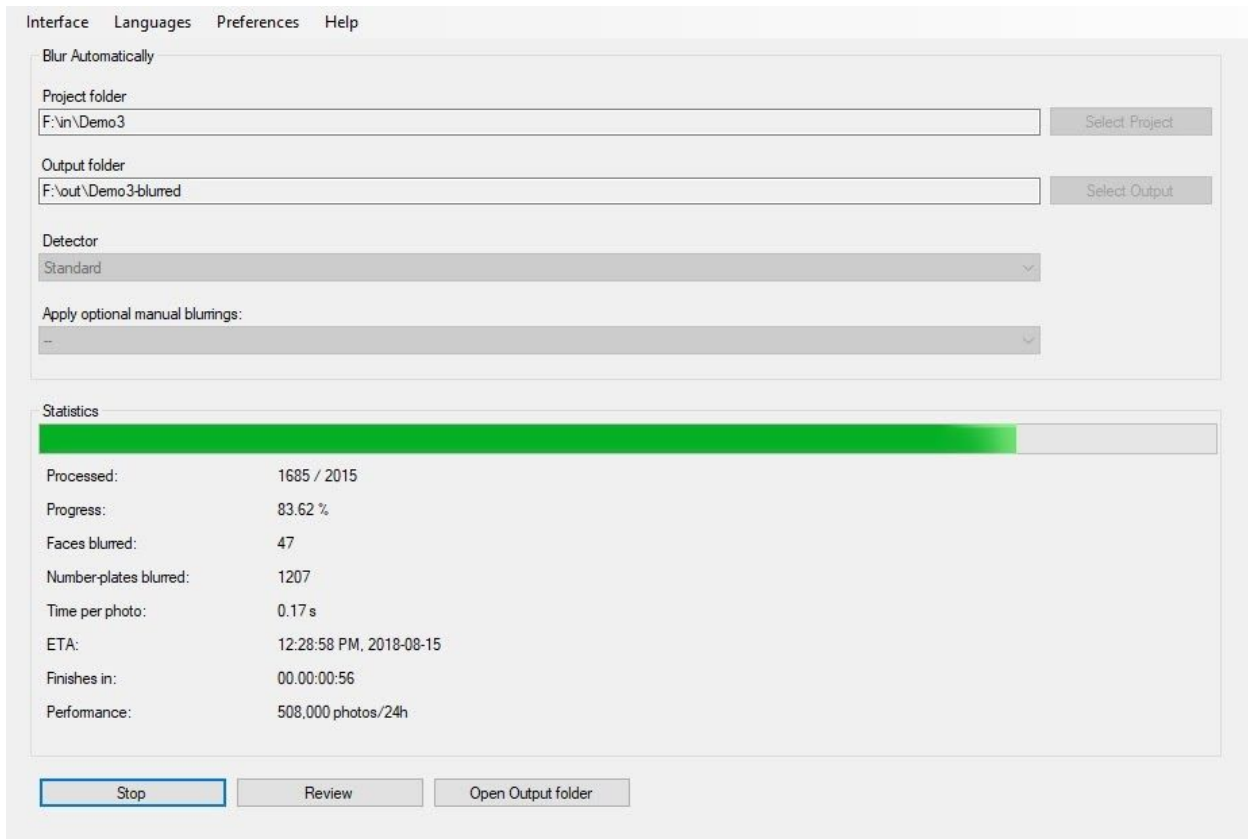
Created by the [Creator 3](#) program.

We are available for hire to help with the integration.

[Get in touch](#).

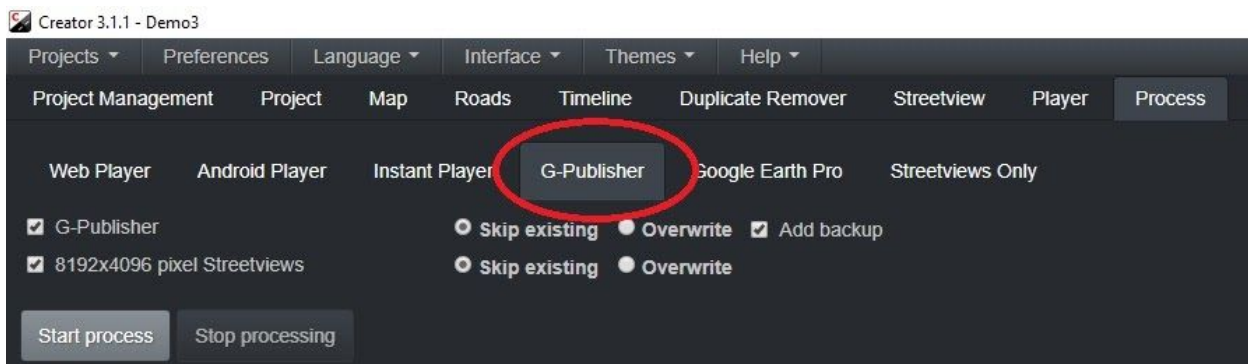
Workflow

Step 1) Automatically blur faces and licence plates with [Privacy Keeper](#).



Step 2) Create Streetviews with [Creator 3](#).

Do not apply Watermarks.



Step 3) Create a [Google account](#) (once only).

Step 4) Upload your Streetviews to Google Maps with **G-Publisher**.

Pages

Upload

G-publisher < **Upload**

- Upload
- Projects
- Map
- Preferences
- About
- Support
- Google account

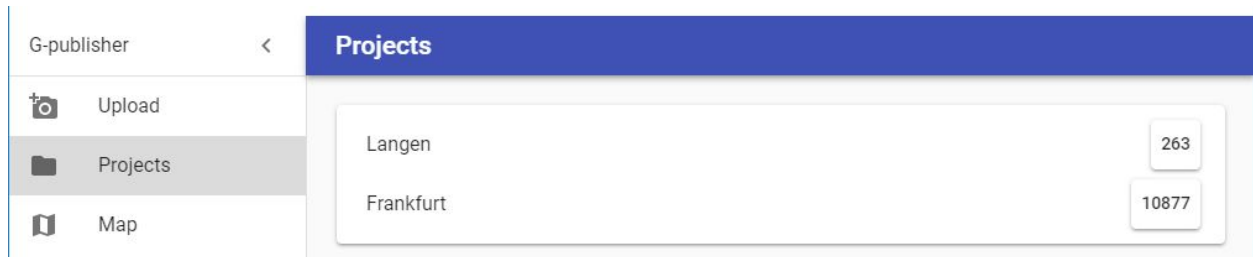
Remaining: 250/263 streetviews Time to finish: 00:15:45
Performance: 3.54 sec/streetview (21,600 streetviews/24h) ETA: 2018-07-20 14:30:33

STOP

2018-07-20 14:15:19: Uploaded S:\as\out\Demo3\panoramas\camera-20180408-140357-000000005.jpg
as Photo Sphere CAoSLEFGMVFPcE5XVTEzWk9tN1NwNmFEeWFmTkxjdkw2dW1LWwozel9IVGV5TTdE
2018-07-20 14:15:23: Uploaded S:\as\out\Demo3\panoramas\camera-20180408-140357-000000006.jpg
as Photo Sphere CAoSLEFGMVFPcE1LUWF3UnRQdG9MTmFnb3diZXFSGS5zQkFjWmtPTW9YU1dyWkMy
2018-07-20 14:15:27: Uploaded S:\as\out\Demo3\panoramas\camera-20180408-140357-000000007.jpg
as Photo Sphere CAoSLEFGMVFPcE9OUGVSNWwxcUZta0JuZjA4TjNoWi0zZk1HV2pzQnJSRjFKdGIT
2018-07-20 14:15:30: Uploaded S:\as\out\Demo3\panoramas\camera-20180408-140357-000000008.jpg
as Photo Sphere
CAoSLEFGMVFPcE9WUDRPMnVFeXU0MzRaQIU2WGpzc0hFVDNjVDRwM3E2aE83NVJH
2018-07-20 14:15:34: Uploaded S:\as\out\Demo3\panoramas\camera-20180408-140357-000000009.jpg
as Photo Sphere CAoSLEFGMVFPcFBZMjhCSnZFLUdfQnpDOE9ibW5Sd1VncGRRcXNDT2F3eG5LbEFO
2018-07-20 14:15:37: Uploaded S:\as\out\Demo3\panoramas\camera-20180408-140357-000000054.jpg
as Photo Sphere CAoSLEFGMVFPcE1xNC1OZTY3VjYxUEFQdkFVN3VfYU1qQWdNdfBhNkNIQ3Awa3Fa
2018-07-20 14:15:41: Uploaded S:\as\out\Demo3\panoramas\camera-20180408-140357-000000055.jpg
as Photo Sphere CAoSLEFGMVFPcE9pMkM1dkJ4YkITZ2U3akNQZwDCZDVsVTQ3elAtbkdnMEVCYTRr
2018-07-20 14:15:44: Uploaded S:\as\out\Demo3\panoramas\camera-20180408-140357-000000056.jpg
as Photo Sphere CAoSLEFGMVFPcE0xYkZYZGJUVXR3enVxc3ZJbGN2TVNCVzhxaUFpUJOTGxwRUd6
2018-07-20 14:15:48: Uploaded S:\as\out\Demo3\panoramas\camera-20180408-140357-000000057.jpg
as Photo Sphere CAoSLEFGMVFPcE5CaEdmdEpEZH4R0FFN1pVYkFSdDNuMFJrNy1ScWxtD3Fwdnlu

Projects

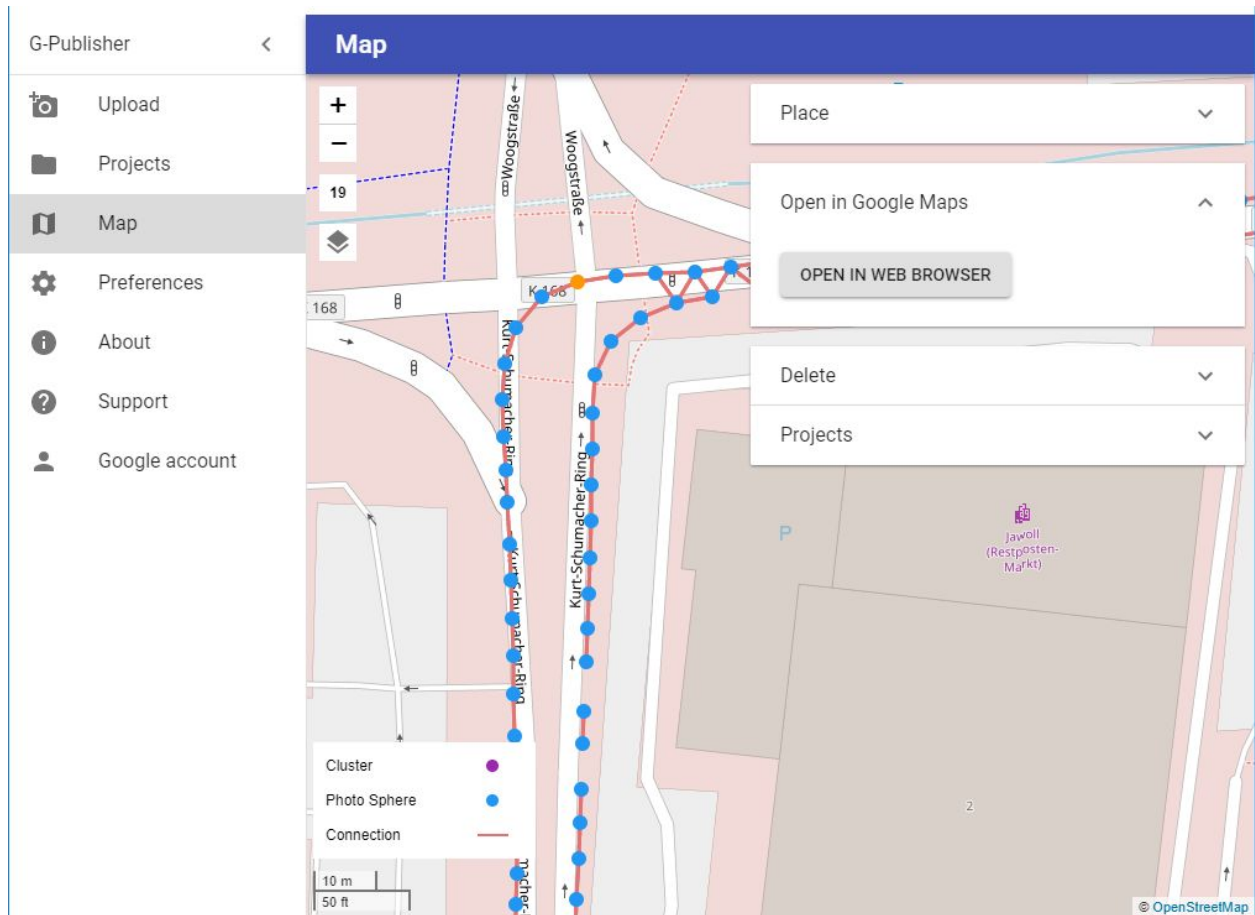
All Photo Spheres with the same **Place** are called a **Project**.



Displays a list of all your projects.

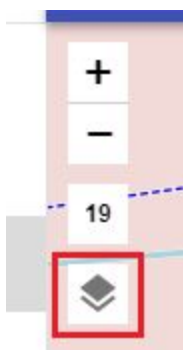
Click a project name to zoom in on the project on the **Map** page.

Map



Map Layers

Over 40 different map providers are available to choose from.
Plus your own map tiles from a local folder or a URL.



Keyboard shortcuts

ESC	Clear all selections
CTRL+A	Select all Photo Spheres visible on the map
Click a blue dot	Select a Photo Sphere
Hold CTRL + click a blue dot	Add a Photo Sphere to the current selection
Shift + draw rectangle	Select all the Photo Spheres in the rectangle
Hold CTRL + SHIFT + draw rectangle	Add all the Photo Spheres in the rectangle to the current selection
DELETE	Photo Spheres: Delete all selected Photo Spheres
DELETE	Connection: Delete all selected Connection
INSERT	Connection: Add a connection between the selected two Photo Spheres
Arrow keys: Up, Down, Left, Right	Scroll the map.

Functionality

For selected Photo Spheres

- **Place:** Change the Place for the selected Photo Spheres.
- **Open in Google Maps:** Open a blue Photo Sphere in Google Maps.
(Not available for purple cluster icons.)
- **Delete:** Delete the selected Photo Sphere(s)
- **Add connection:** Manually create connections between two blue Photos Spheres.
- **Add connections automatically:** Automatically create connections between the selected Photo Spheres that are N meters apart.

Projects

Displays a list of all your projects. Click a project to zoom in on it.

Click on the  button to additionally select all the Photo Spheres of that project.

Connections

Connections are to navigate from one Photo Sphere to another.

A connection is displayed as a clickable arrow when viewing the Photo Sphere in Google Maps.

An orange line between two Photo Spheres indicates they are connected.

In addition to the automatic connections from the Upload page you can

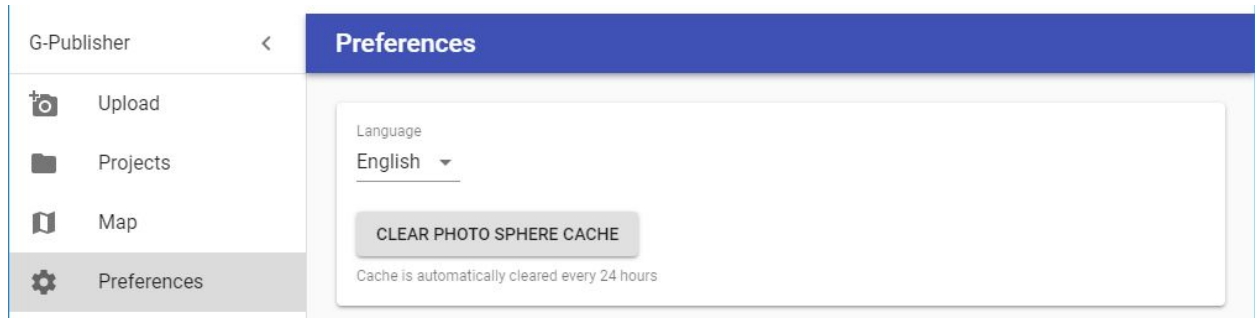
- Select a orange connection and delete it.
- Manually create connections between two blue Photos Spheres.

Quote from

Maps User Contributed Content Policy Help -> Format Specific Criteria -> [360 Photos](#)

- When multiple 360 photos are published to one area, connections between them may be automatically generated. Whether your connections were created manually or automatically, we may adjust, remove, or create new connections — and adjust the position and orientation of your 360 photos — to ensure a realistic, connected viewing experience
- When connecting 360 photos, ensure that any links you create are between nearby vantage points. Do not attempt to create connections that will disorient those exploring your connected 360 photos for the first time.

Preferences



Language

Change the language.

English, German and Romanian are supported.

Clear Photo Sphere cache

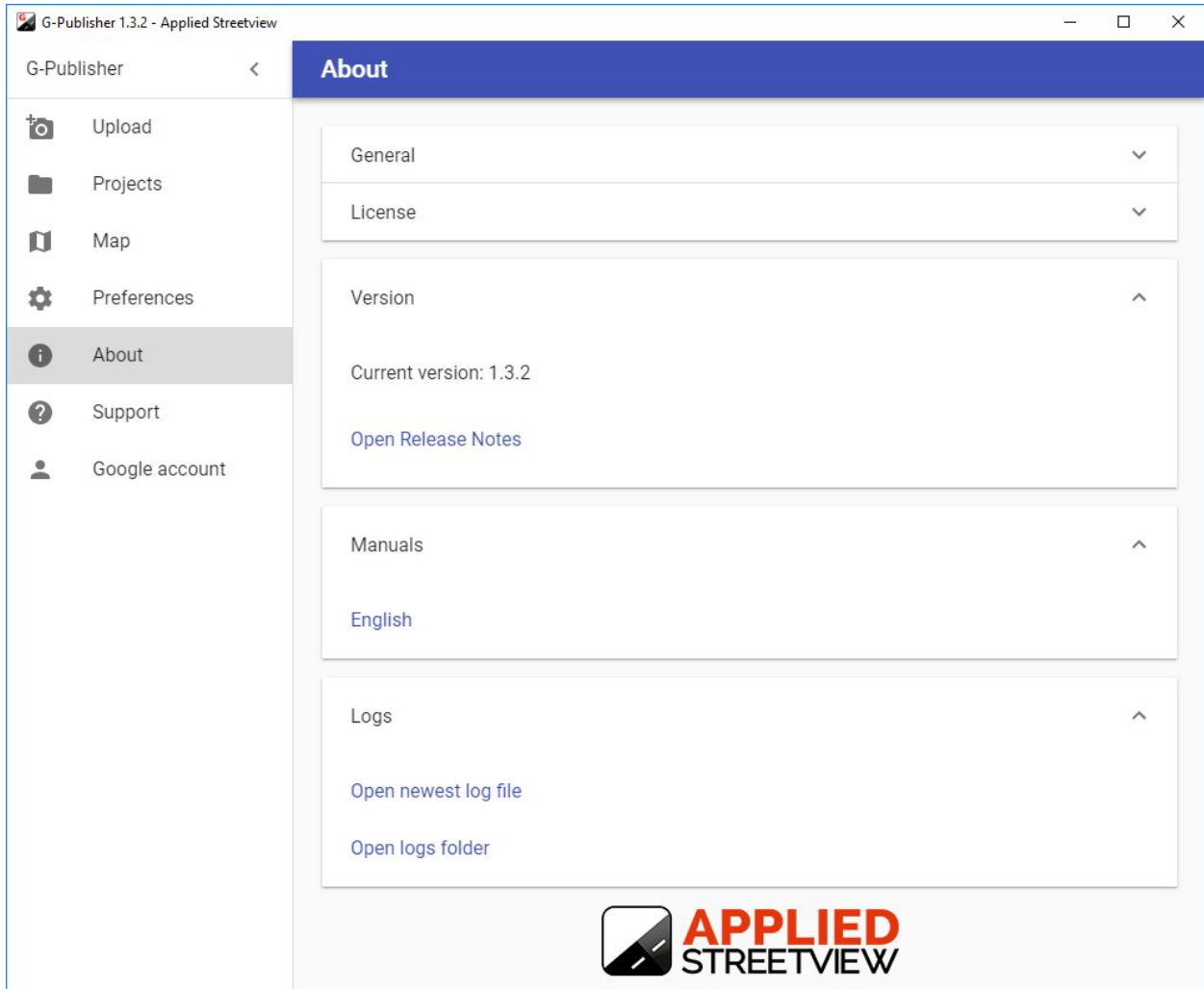
Clears the Photo Sphere cache.

When opening the **Projects** or **Map** page a fresh Photo Sphere list it will be downloaded from the Google Street View Publish API.

The cache is automatically cleared every 24 hours.

The cache is automatically cleared when updating G-Publisher.

About



When opening the About page G-Publisher automatically checks for a new release.
When starting G-Publisher it checks for a new release.

We strongly recommend to update to the newest release.

Support

G-publisher < **Support**


- Upload
- Map
- Preferences
- About
- Support**
- Google account

Contact person	Company
John Doe	Testcompany Ltd.
Phone	Skype
+1 234 56789	live:JohnDoe123
Email	
JohnDoe123@yourcompany.com	

Subject

Steps to Reproduce

Attach files

CHOOSE FILE 

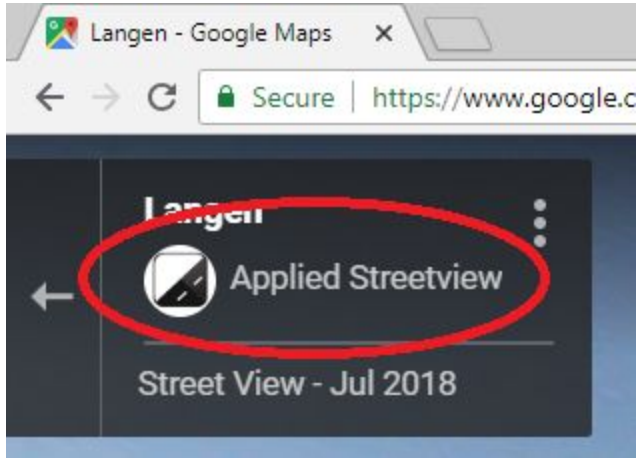
Error logs will be automatically attached.

SEND

When you use the [Support](#) page to contact us the newest 3 logs are automatically attached.

Google Account

What your Google account will be displayed like by Google maps:



Display

Icon

Applied Streetview

Explanation

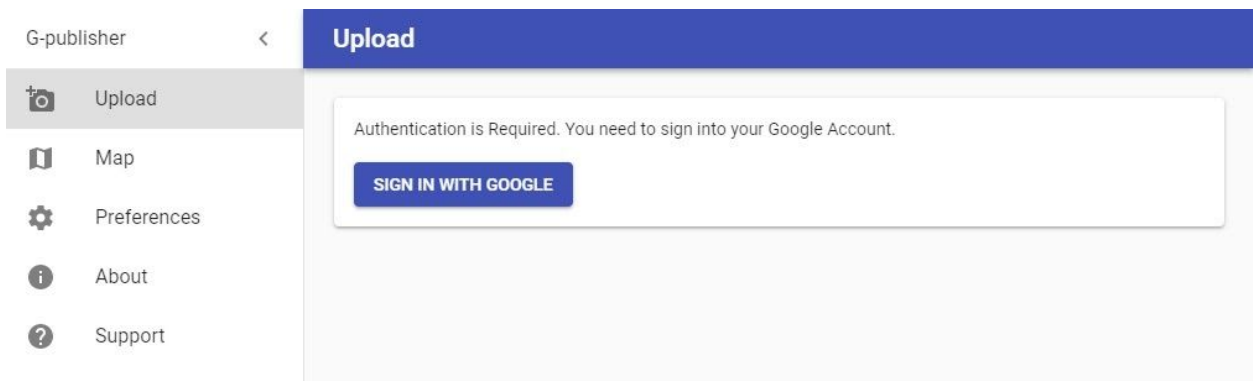
Icon of your Google account

First-Name Last-Name of your Google account

Create a new Google Account here:

<https://accounts.google.com/signup/v2/webcreateaccount?hl=en&flowName=GlifWebSi&flowEntry=SignUp>

Then Authenticate with your own Google account:



 Sign in with Google

Choose an account

to continue to [Publish streetviews](#)



Applied Streetview
applied.streetview@applied-streetview.com



Use another account

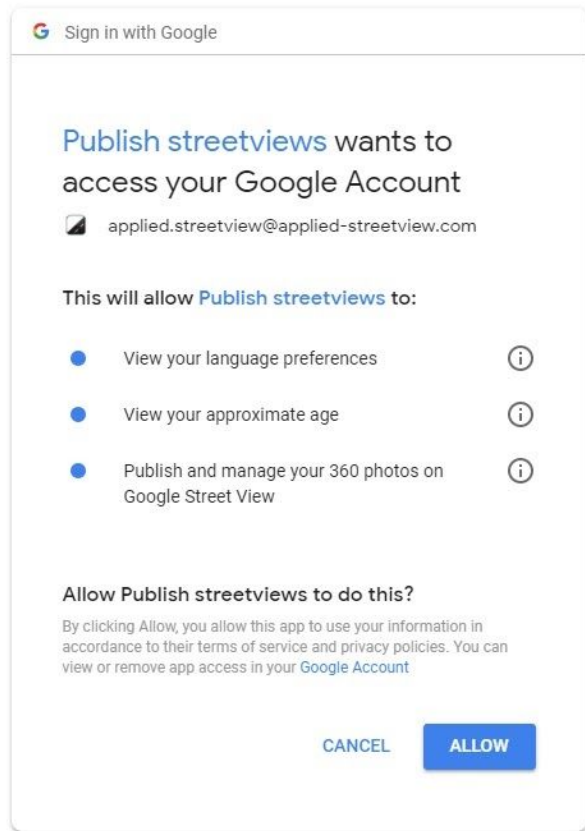
To continue, Google will share your name, email address, and profile picture with Publish streetviews.

English (United States) ▾

[Help](#)

[Privacy](#)

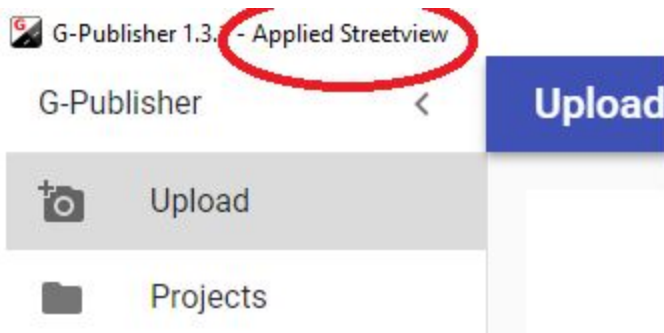
[Terms](#)



English (United States) ▾ Help Privacy Terms

Done.

You can switch between many Google accounts, working on behalf of your customers. G-publisher shows the active Google account in the Windows title:



Start uploading your Streetviews as Photo Spheres.
Pick a folder with your streetviews and set a Place. E.g. the cities name.

The screenshot shows the 'G-Publisher' application interface. On the left is a navigation sidebar with the following items: 'Upload' (highlighted), 'Projects', 'Map', 'Preferences', 'About', 'Support', and 'Google account'. The main content area is titled 'Upload' and contains the following fields and controls:

- Streetviews folder:** A button labeled 'CHOOSE FOLDER' with a folder icon.
- Place:** A text input field with the placeholder 'Find a place'.
- Instructions:** Below the input field, it says 'Find a place. Search for e.g. `place country` like in `Berlin Germany`.'
- Maximum distance between Photo Spheres for automatic connections to be created (m):** A text input field containing the number '8'.
- START:** A large button at the bottom of the form.

Google

Google Delays

There is a delay for your contributions to become visible to the public on the Google Maps page.

The delay can be 30 seconds to 10 hours. Maybe a day.

Just wait for Google to update. **Do NOT immediately try to delete and upload again.**

Be aware that the Google API G-Publisher uses and the Google Maps website available to the public are not in synch. Usually the Google Maps website is behind.

Again, please wait a day.

If you think something went wrong, go to G-Publisher's [About](#) page and check the logs with **Open latest log file** or **Open logs folder**.

If you use the [Support](#) page to contact us the newest 3 logs are automatically attached.

Google Policies

A selection of Google policies:

Maps User Contributed Content Policy Help Center

<https://support.google.com/contributionpolicy/#topic=7422769>

Image Acceptance & Privacy Policies

<https://www.google.com/intl/en/streetview/privacy/>

Google Terms of Service

<https://policies.google.com/terms>

Google Maps/Earth Additional Terms of Service

https://www.google.com/help/terms_maps.html

Google Limits

We lifted all limits for G-Publisher. You should never experience a limitation.

For the details see: <https://developers.google.com/streetview/publish/limits>

The number of Photo Spheres you can publish per day depends on the speed and quality of your Internet connection and the workload of the Google infrastructure in your part of the world.

Our performance is about 6 seconds for uploading a single Photo Sphere.

That is about 14.000 Photo Spheres in 24 hours.

Google Errors

Upload

In case there is an upload error the same upload will be tried again after 10 seconds.

In case of another error the same upload will be tried again after 60 seconds.

Then uploading continues with the next streetview.

All errors are logged.

Map - Updating Places and Connections

In case there is an error it will be tried again after 10 seconds.

In case of another error it will be tried again after 60 seconds.

All errors are logged.

Support

Support is available in English language.
Support is provided for the newest G-Publisher version only.

Check for a new release first:

Help -> About page of G-Publisher

or

<http://www.applied-streetview.com/programs/g-publisher>

Contact Support

Helpdesk: support.applied-streetview.com

E-Mail: support@applied-streetview.com

Skype ID: applied-streetview

Phone: +49 6103 - 372 7494

Consulting

We are available for hire for consulting.

Please contact:

E-Mail: jan.martin@applied-streetview.com

Skype ID: applied-streetview

Phone: +49 6103 - 372 7494