



APPLIED STREETVIEW

Android Player

Manual
version 2.3.0



Index

Overview	3
Portrait and Landscape	4
Publishing	5
Creator 3	5
Publish	5
Add map tiles	5
Copy to the tablet	5
Creator 5	6
Publish	6
Add map tiles	6
Copy to the tablet	6
Projects	7
Player	8
Bookmarks	9
About	10
Support	11

Overview

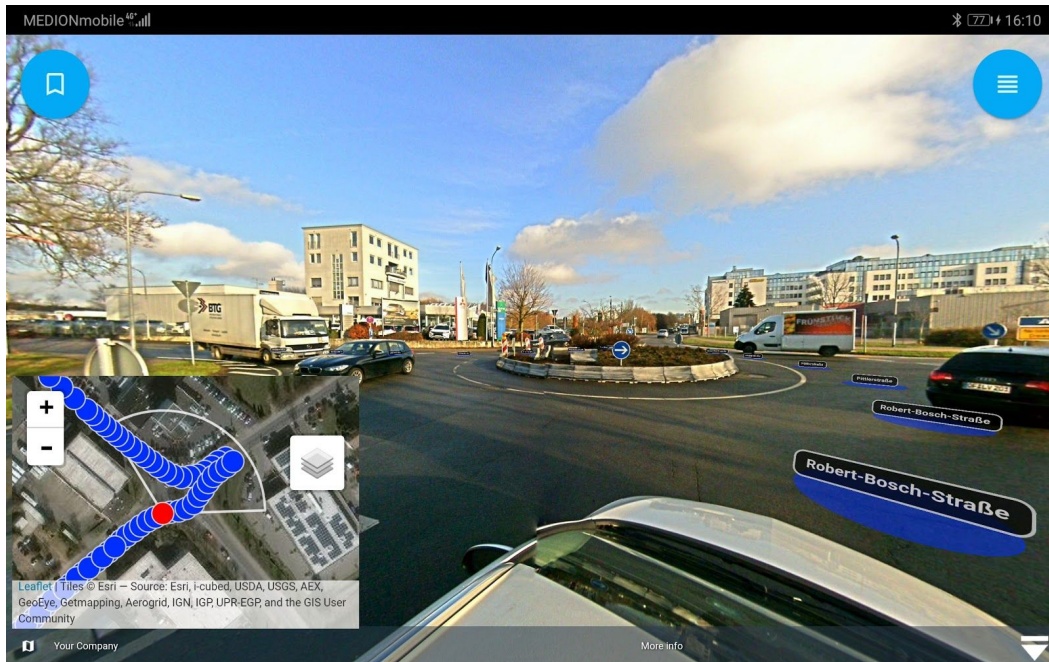
The Android player works 100% offline.

It needs no internet access at all.

All of the streetviews and even the map-tiles can be saved to the tablet.

Ideal for demos, sales shows and tactical teams.

Portrait and Landscape

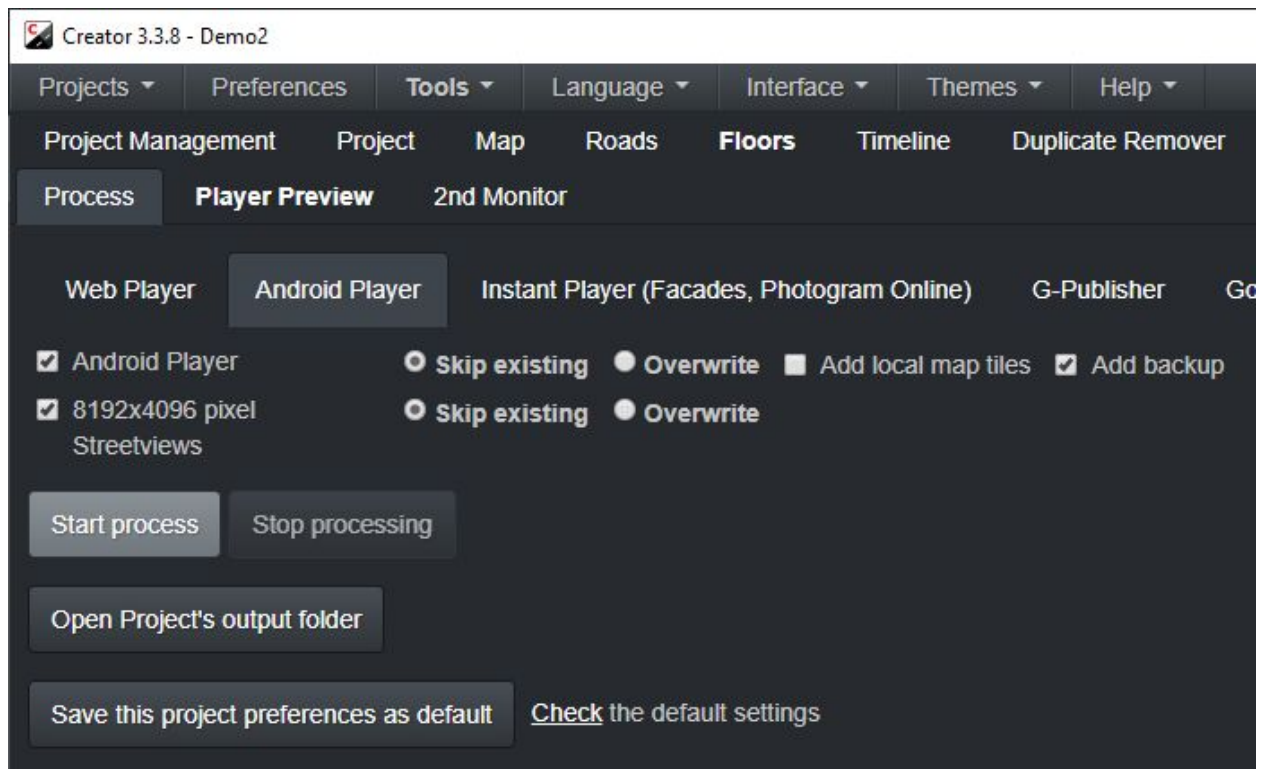


Publishing

Creator 3

Publish

In the **Process** tab select **Android Player** tab then click on **Start process**.



Add map tiles

Map tiles are added automatically when the project is set to a local map tiles folder.

See: Map page: You companies map files

A .zip archive will be created.

Copy to the tablet

Copy the .zip archive to the tablet E.g. into the Downloads folder.

Open the Android Player app and follow the instructions on the [Projects](#) page.

Creator 5

Publish

Open the **Publish** page.

Make sure the **Create streetview-tiles** checkbox is checked.



Add map tiles

Adding map tiles is optional.

Without them it needs a working internet connection to download map-tiles when viewing.

Create map tiles with the [Map Downloader](#) program. Or use your own map tiles.

Copy the folder with the map tiles into the **project folder** and rename it to **maptiles**.

Copy to the tablet

Copy the **projects folder** to the tablet. The **panoramas** folder is not needed.

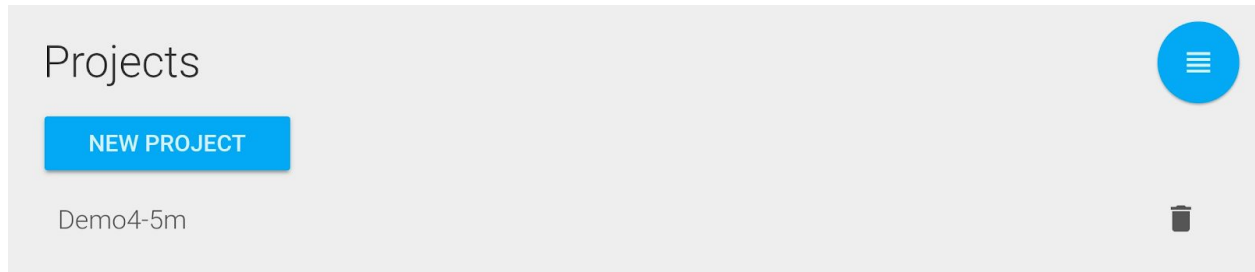
To speed up the copying you should zip the folder.

Unzip on the tablet with the **Files** App. (More -> unzip).

Open the Android Player app and follow the instructions on the [Projects](#) page.

Projects

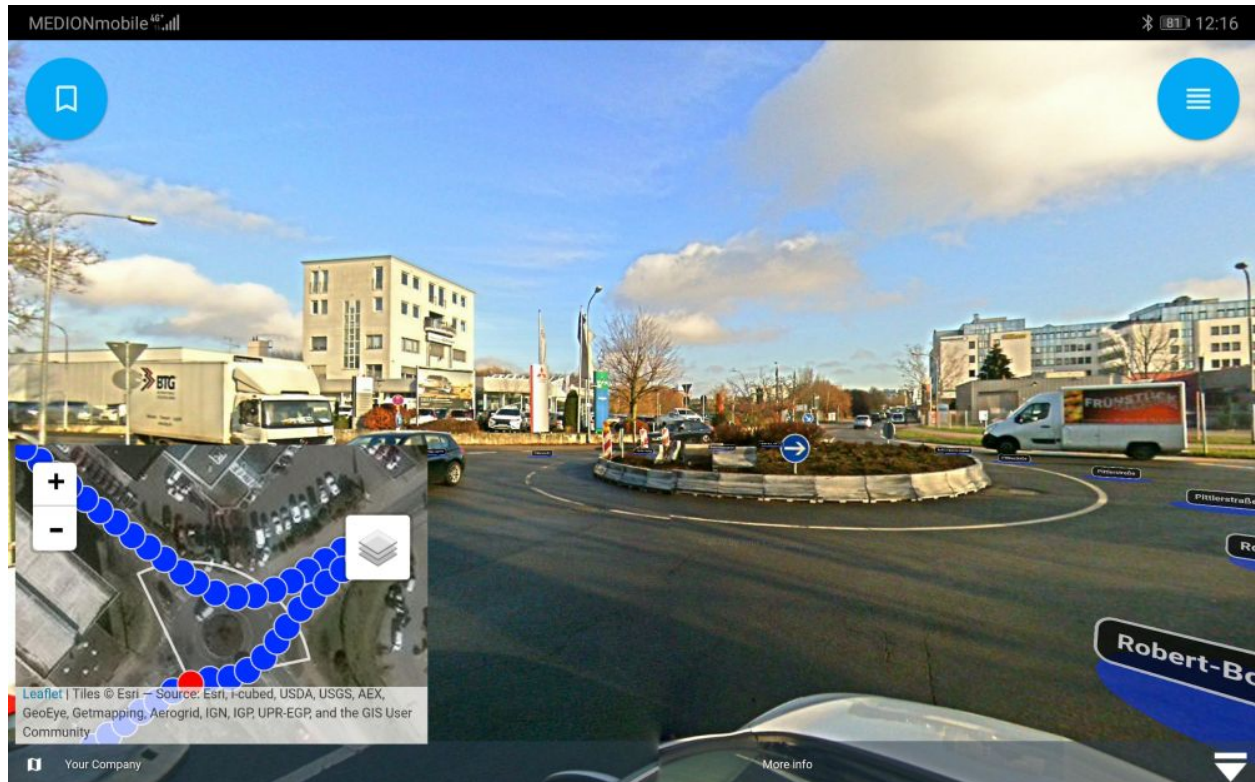
Click the **New Project** button and pick the unzipped folder of the project to add it.
The project should appear in the list. Click on the **project name** to open the Player.



If the project is located on an external SD card click on the SD card icon when picking the folder.

Player

Opens the player.




You can bookmark a streetview with the current viewing direction.
Use the bookmark icon in the top left.

Bookmarks

Displays a list of all the projects and their bookmarks.

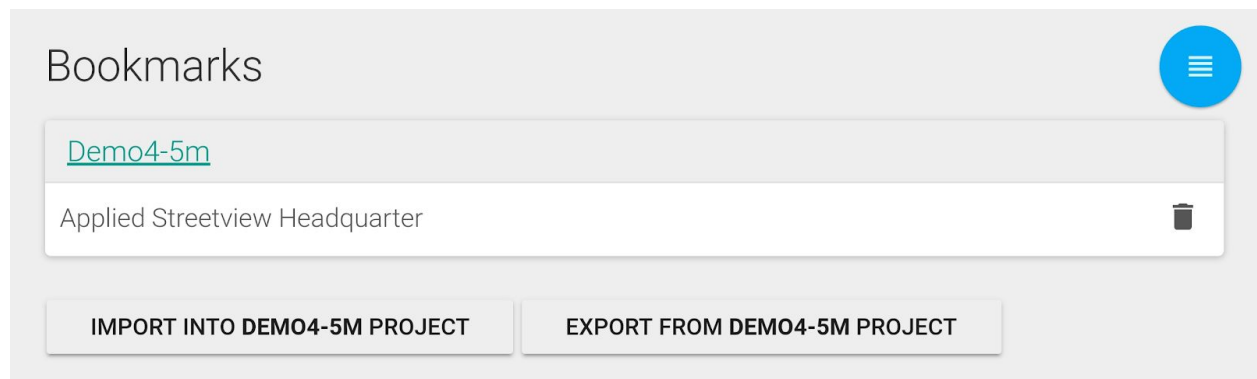
Click on the bookmark name to open it's associated project. Then open a bookmark.

Click on the  button to delete a bookmark.

Use the **Export/Import** buttons at the bottom to backup and restore your bookmarks.

NOTE: Bookmarks are not auto generated for projects published with Creator 5.

In the player you can bookmark a streetview and the viewing direction with the bookmark icon in the top left.



About

Version 2.3.0

Applied Streetview



Support

Support is provided for the newest Android Player app only.

Support is available in English.

Helpdesk: support.applied-streetview.com
E-Mail: support@applied-streetview.com
Skype ID: applied-streetview
Phone: +49 6103 - 37 27 494