



## Photogram Online Client

Manual  
version 1.0.0

The screenshot displays the 'Survey - Demo3' interface. On the left is a navigation menu with options: Survey, Data table, Preferences, and Manual. The main area is split into three panels: a top-left streetview image with a red rectangle, a bottom-left streetview image with a green rectangle, and a right-side aerial map with a white polygon and various colored markers. A 'Result' popup is open, showing 'Area: 14.524 m²' and 'Label: Garage door'. A legend at the bottom right of the map identifies markers: Streetview (blue dot), Streetview cluster (black dot), Current result (orange square), Saved result (purple circle), and Saved result cluster (white circle). The user's name 'Tom Tester' is visible in the top right corner.

Photogram < Survey - Demo3 Tom Tester

Survey

Data table

Preferences

Manual

Geometry  
Rectangle

Result

Area 14.524 m<sup>2</sup>

Label  
Garage door

DELETE COPY SAVE

Streetview

Streetview cluster

Current result

Saved result

Saved result cluster

Tiles © Esri — Source: Esri, i-cubed, USDA, USGS, AEX, GeoEye, Getmapping, Aerogrid, IGN, IGP, UPR-EGP, and the GIS User Community


## Index


<b>Survey</b>	<b>3</b>
Map	3
Collecting data	4
Save	6
Edit	6
Delete	6
<b>Data table</b>	<b>6</b>
View	7
Delete	7
Download	8
<b>Preferences</b>	<b>8</b>
<b>Account</b>	<b>9</b>
<b>Support</b>	<b>10</b>
<b>Consulting</b>	<b>10</b>


# Survey

## Map

By default the map loads all the streetviews from the project and zooms to their extent.

Each streetview on the map is represented by a blue icon .

When there are multiple streetviews at the same place they are clustered and represented by a grey icon .

To change the map base layer click on the  button, this will open the **Base layer** with a list of providers to choose from. Pick a provider for a map or aerial images and then click **OK**.

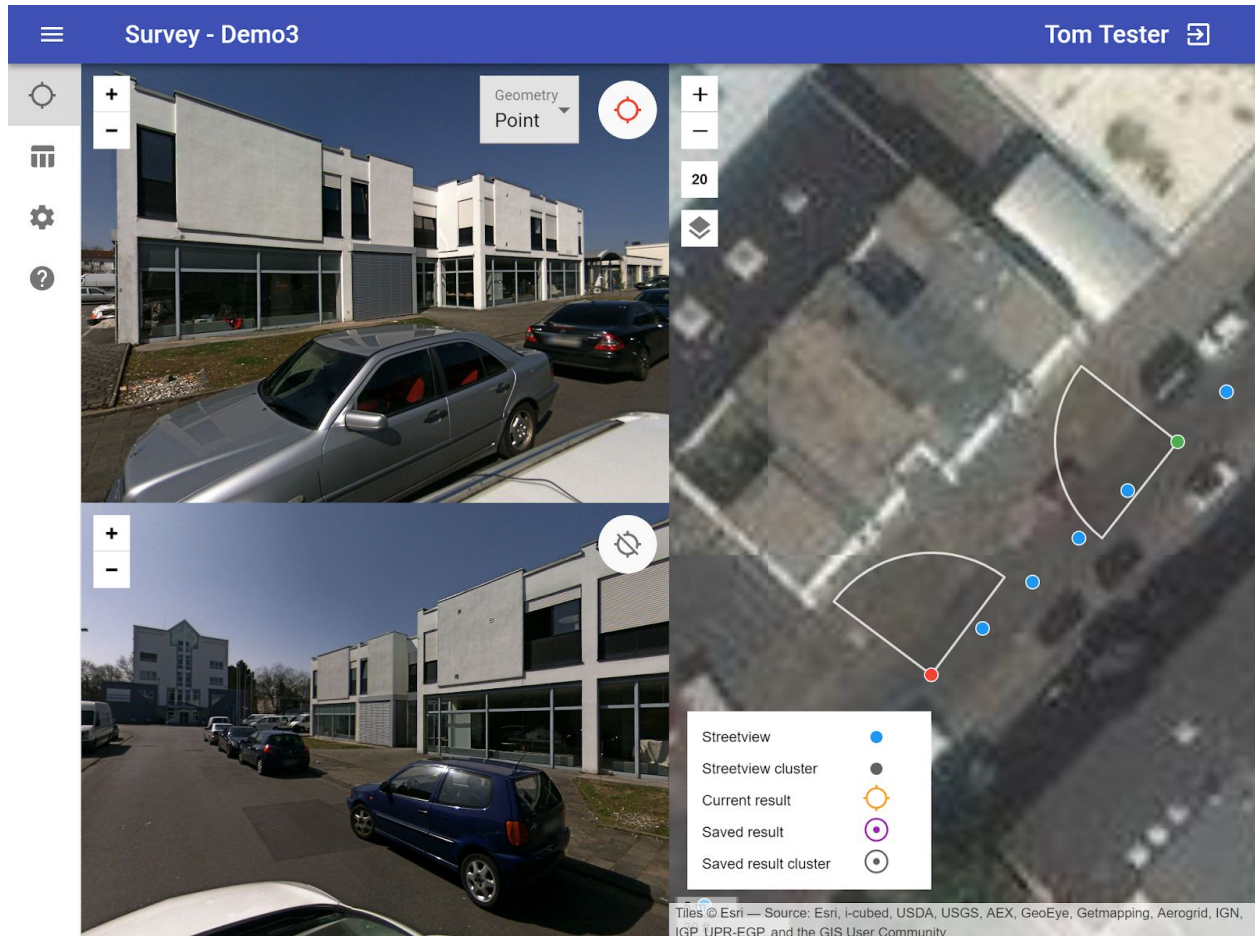
To set your own custom base layer click the  button next to **Your Company's map tiles**. Here you can enter your Label, URL and attribution.

The URL is for TMS-style tile server.

Example: <https://tiles.yourcompany.com/{z}/{x}/{y}.png>

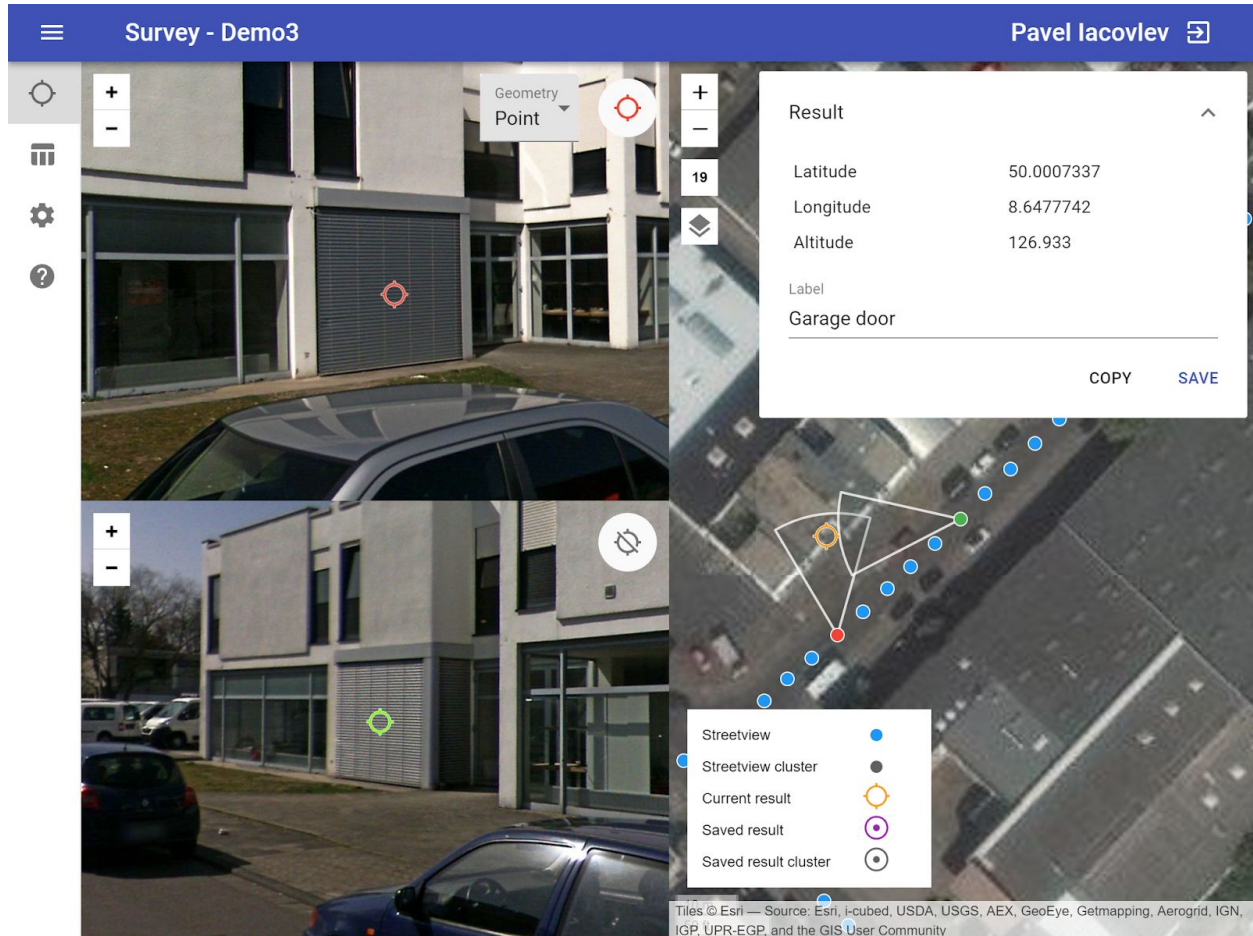
## Collecting data

Using the map decide what needs to be measured. For example let's try to collect data about the garage door of a building. Click on the map on the approximate location of the building.



Ideally the object should be visible in the center of both top and bottom streetviews right after the map click. Photogram automatically picks two streetviews with an optimal 90 degree angle between the two streetviews.


Next is to identify the measured object on both top and bottom streetviews and **double click** on it in the streetview panels.



The measured point can be moved by dragging.

By default **Geometry** (top right of the streetview panel) is set to **Point**. Set it to **Line** or **Rectangle** to measure lengths or areas. To add additional points (2 for Line and 4 for Rectangle) double click on the measured object in the streetview panel.

**IMPORTANT:** The creation order of the measured points must be identical for both top and bottom streetview. Creating the points in a clockwise sequence is recommended.

Notice that the result position is display on the map as the  icon, this is automatically updated if you move any measured point.

## Save

After the measured points are placed the **Result panel** should appear in the top right corner of the map panel.


The panel contains point coordinates:

Geometry for a point,

length for line


area for a rectangle.

Specify a label, in this case it's "Garage door" and then click the **Save button**.


This action adds the result into the server database, and places the result on the map with the following icon .

You could also copy the result into the clipboard by clicking on the **Copy button**.

## Edit

Click on a previously saved result using it's icon  on the map. Adjust the measured object position in the top and bottom streetviews panel or the Label in the **Result panel**. Click the **Save** button.

## Delete

Click on a previously saved result using it's icon  on the map. Click the **Delete** button in the **Result panel**.

## Data table

In the left menu click on the **Data table** menu item.

Photogram < **Data table - Demo3** Tom Tester ↗

- Survey
- Data table**
- Preferences
- Manual

[DOWNLOAD](#)

<input type="checkbox"/>	Label	Result	Geometry	Date ↓
<input type="checkbox"/>	<input checked="" type="radio"/> Object 1	14.524 m <sup>2</sup>	Rectangle	2018-11-26 13:31:03
<input type="checkbox"/>	<input checked="" type="radio"/> Garage door	50.0007337, 8.6477738, 126.830	Point	2018-11-26 13:29:38
<input type="checkbox"/>	<input checked="" type="radio"/> Object 2	4.430 m	Line	2018-11-26 13:25:41

Rows per page 10 ▼ 1-3 of 3 < >

A list of all the collected results will appear. The list is paginated, you can change the current page and the amount of the results per page in the bottom right side of the table.

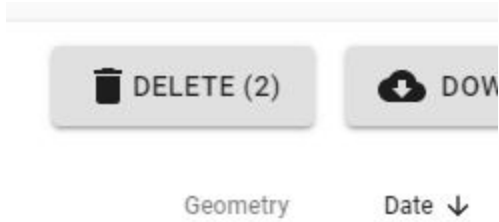
Table contains information like Label, Result, Geometry and Date.

## View

Click on the  icon to view the result on the **Survey** page.

## Delete

Select one or multiple results by clicking on the  checkbox.

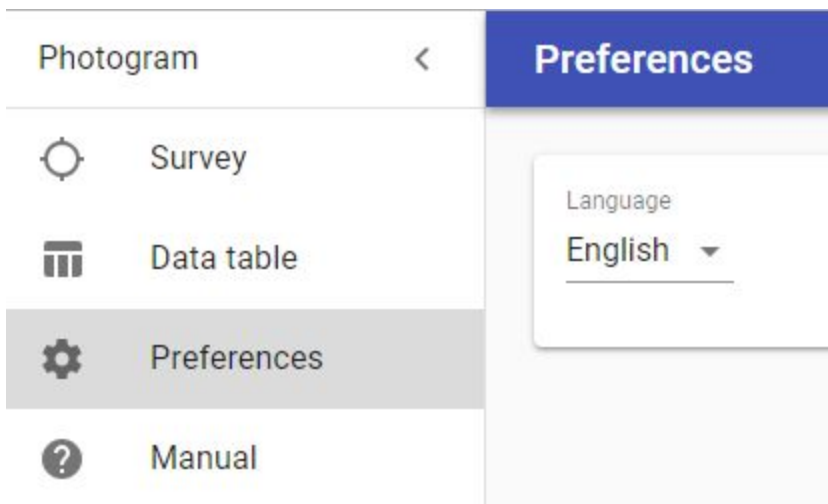


A **Delete button** will appear in the top right corner of the table. Click on the **Delete button** to remove the selected results.

## Download

Click on the **Download button** in the top right corner of the table to download all the results in the [GeoJSON](#) format. It can be used e.g. with ArcGIS and QGIS.

## Preferences



### Language

Change the current language



# Account



Current logged in user first name last name as well as the logout button are displayed in the top right corner of the browser window.

# Support

Please update first.

Support is provided for the newest Photogram program only.

Maybe your problem has already been solved?

Check

<http://www.applied-streetview.com/programs/photogram-server>

for a new release.

## Contact

Support is available in English.

**Helpdesk:** [support.applied-streetview.com](http://support.applied-streetview.com)

**E-Mail:** [support@applied-streetview.com](mailto:support@applied-streetview.com)

**Skype ID:** applied-streetview

**Phone:** +49 6103 - 372 7494

# Consulting

We are available for hire for consulting.

Please contact:

**E-Mail:** [jan.martin@applied-streetview.com](mailto:jan.martin@applied-streetview.com)

**Skype ID:** applied-streetview

**Phone:** +49 6103 - 372 7494