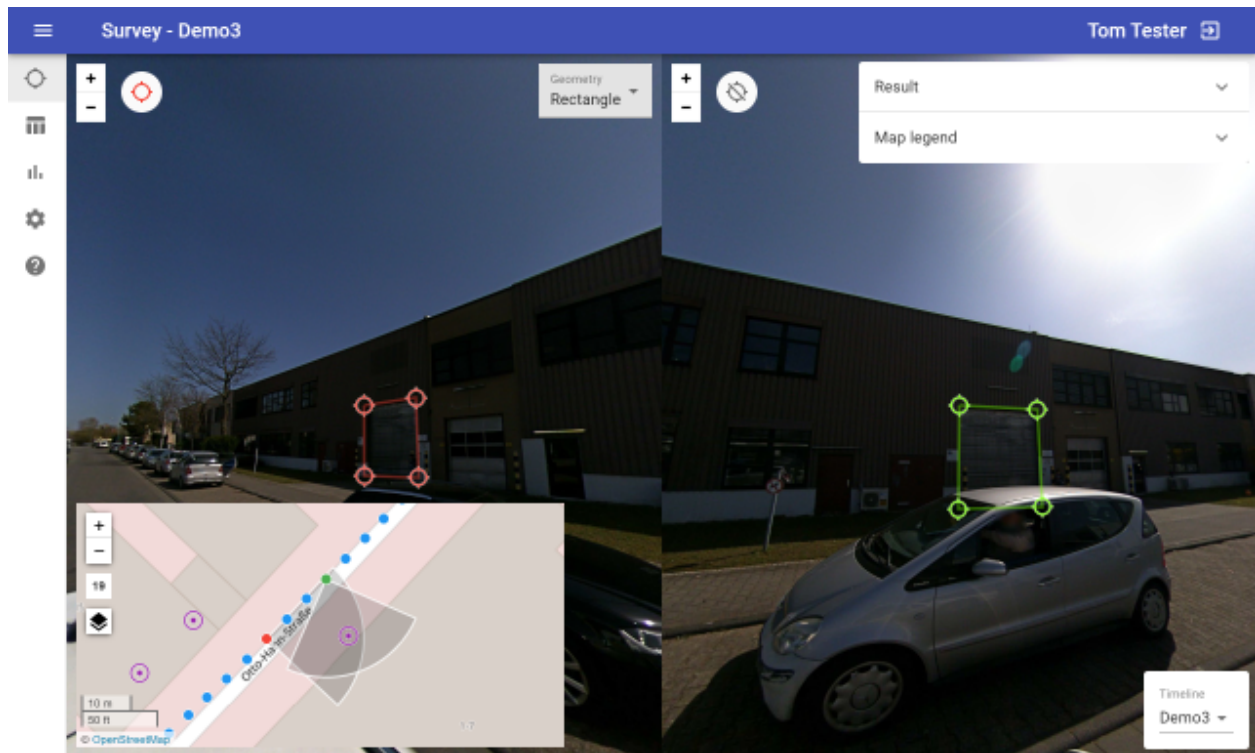




# APPLIED STREETVIEW

## Photogram Online Client

Manual  
version 1.7.2



## Table of Content

<b>Workflows</b>	<b>3</b>
<b>Work with already geo-referenced assets</b>	<b>4</b>
<b>Survey</b>	<b>7</b>
Collecting data	8
Save	10
Edit	10
Delete	10
<b>Data table</b>	<b>10</b>
View	11
Delete	11
Download	12
<b>Preferences</b>	<b>13</b>
Layout	13
<b>Account</b>	<b>15</b>
<b>Support</b>	<b>16</b>
<b>Consulting</b>	<b>16</b>

# Workflows

Photogram Online supports two very different workflows:

- 1) Work with already geo-referenced assets

Visualize your assets existing Lat/Lon coordinates with your new streetviews.

Collect data using the forms.

- 2) Survey

For when you have no geo-referenced assets yet.

Collect data using the forms.

# Work with already geo-referenced assets

This starts with opening Photogram Online by a URL.

Let's assume you already have Latitude and Longitude coordinates for at least some of your assets. You like to check them, survey by entering data using the forms, maybe adjust the position.

Most likely then to geo-reference additional assets.

For this you somehow need to generate a URL for your existing assets.  
Then to open them in Photogram Online.

A working example for a static file:

<https://s3.amazonaws.com/aplsv-new/po-links.html>

This can be done with programs as simple as Excel.

With the links you can open either the **Survey** view or the **Streetview** view.

**Survey** view:

[http://photogram.applied-streetview.com:12045/2b94a2ca-63eb-47ec-adc0-f3ea7e120a72/photogram/survey/?v\\_label=Applied%20Streetview%20Headquarter&v\\_lng=8.65112470509&v\\_lat=50.00117589568&v\\_alt=129](http://photogram.applied-streetview.com:12045/2b94a2ca-63eb-47ec-adc0-f3ea7e120a72/photogram/survey/?v_label=Applied%20Streetview%20Headquarter&v_lng=8.65112470509&v_lat=50.00117589568&v_alt=129)

**Streetview** view

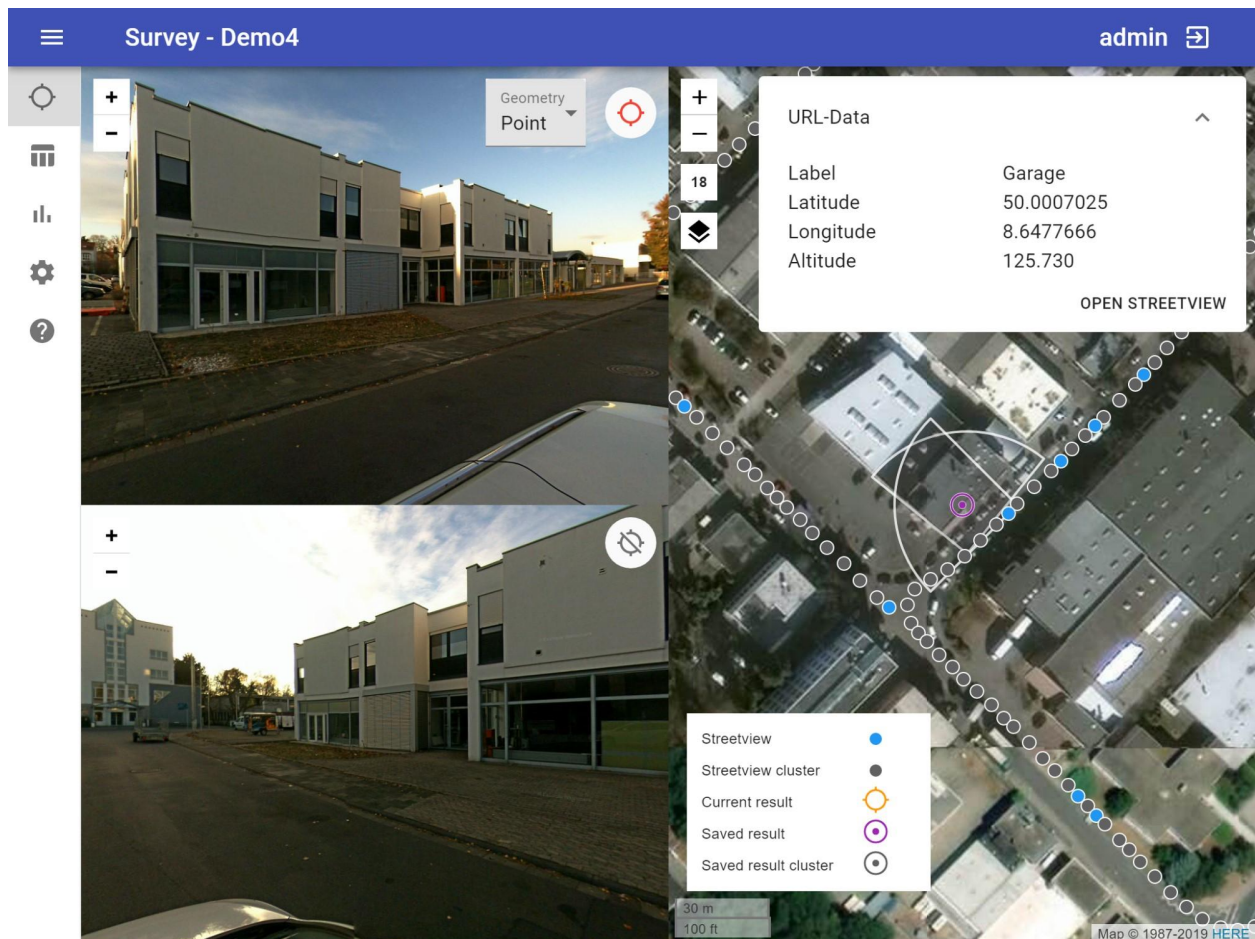
[http://photogram.applied-streetview.com:12045/2b94a2ca-63eb-47ec-adc0-f3ea7e120a72/player/?v\\_label=Applied%20Streetview%20Headquarter&v\\_lng=8.65112470509&v\\_lat=50.00117589568&v\\_alt=129](http://photogram.applied-streetview.com:12045/2b94a2ca-63eb-47ec-adc0-f3ea7e120a72/player/?v_label=Applied%20Streetview%20Headquarter&v_lng=8.65112470509&v_lat=50.00117589568&v_alt=129)

To do this open a project in the browser and append the predefined query string parameters to the URL, for example:  
`?v_lat=50.00070251&v_lng=8.64776659&v_alt=125.72959744732&v_label=Garage`

The full URL will look something like this:

**`http://yourserver.com:12045/bd41b9aa-0424-4b6b-98f5-1ccb3d856e69/photogram/survey/?v_lat=50.00070251&v_lng=8.64776659&v_alt=125.72959744732&v_label=Garage`**

and would open the following view:



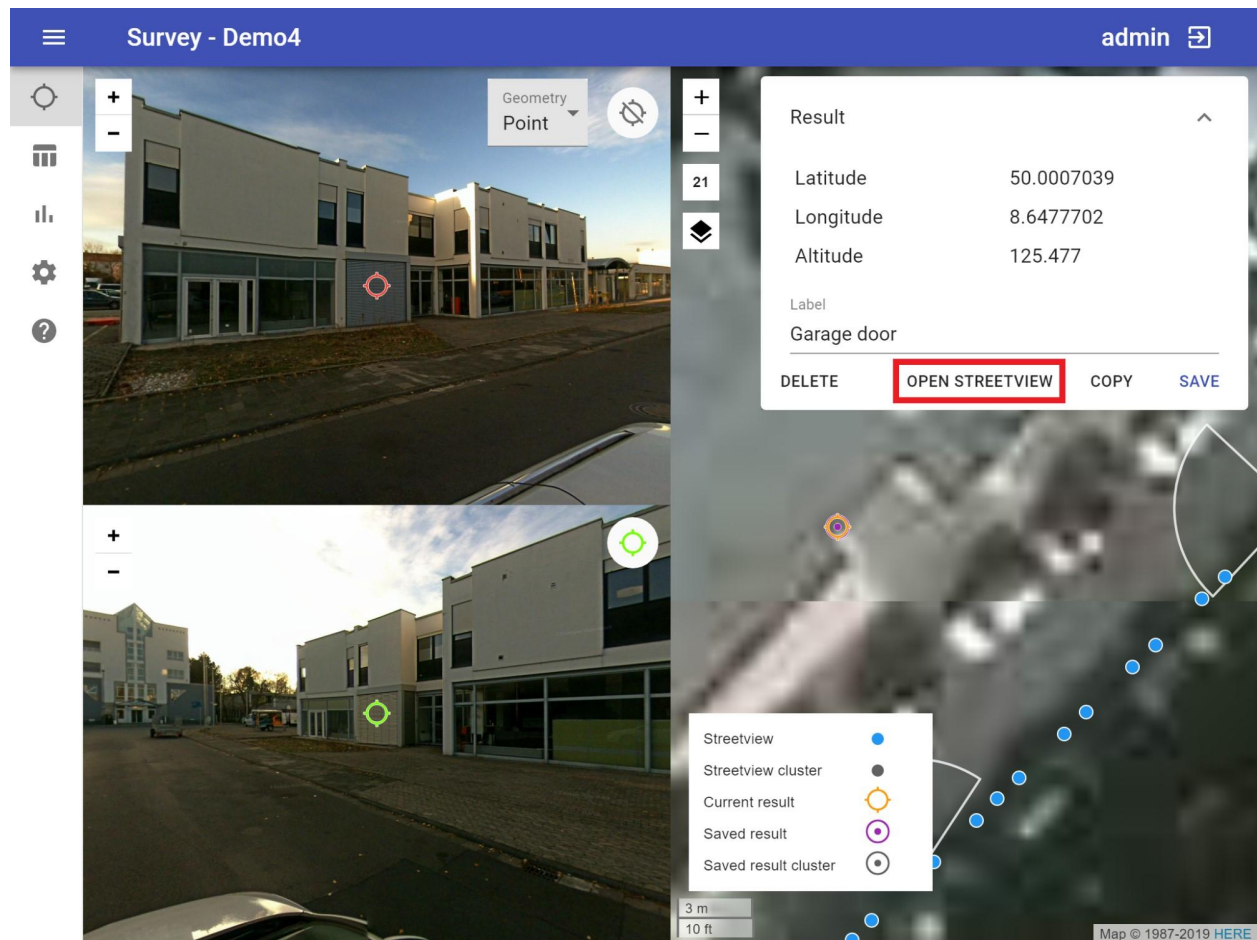
The data provided in the URL will be displayed in a the **URI-Data** panel located in the top right of the Map section. Click on the **Open Streetview** button to preview this location in the Player.



Click on **Open Survey** to return to the Survey looking at your asset.



It's possible to preview any measurement result by clicking **Open Streetview**.




## Survey

For when you have no geo-referenced assets yet.

By default the map loads all the streetviews from the project and zooms to their extent.

Each streetview on the map is represented by a blue icon ●.

When there are multiple streetviews at the same place they are clustered and represented by a grey icon ●.

To change the map base layer click on the  button, this will open the **Base layer** with a list of providers to choose from. Pick a provider for a map or aerial images and then click **OK**.

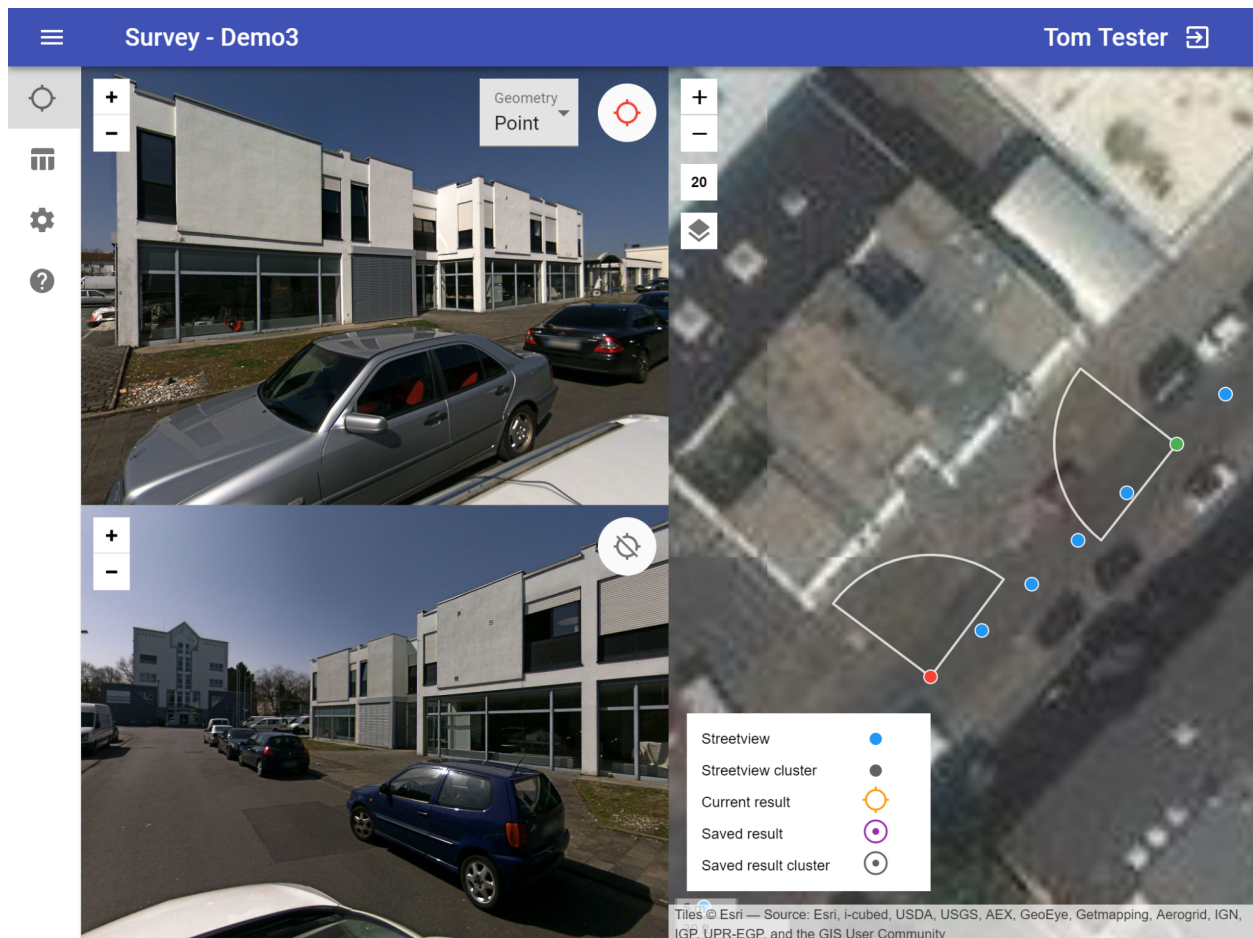
To set your own custom base layer click the  button next to **Your Company's map tiles**. Here you can enter your Label, URL and attribution.

The URL is for TMS-style tile server.

Example: <https://tiles.yourcompany.com/{z}/{x}/{y}.png>

## Collecting data

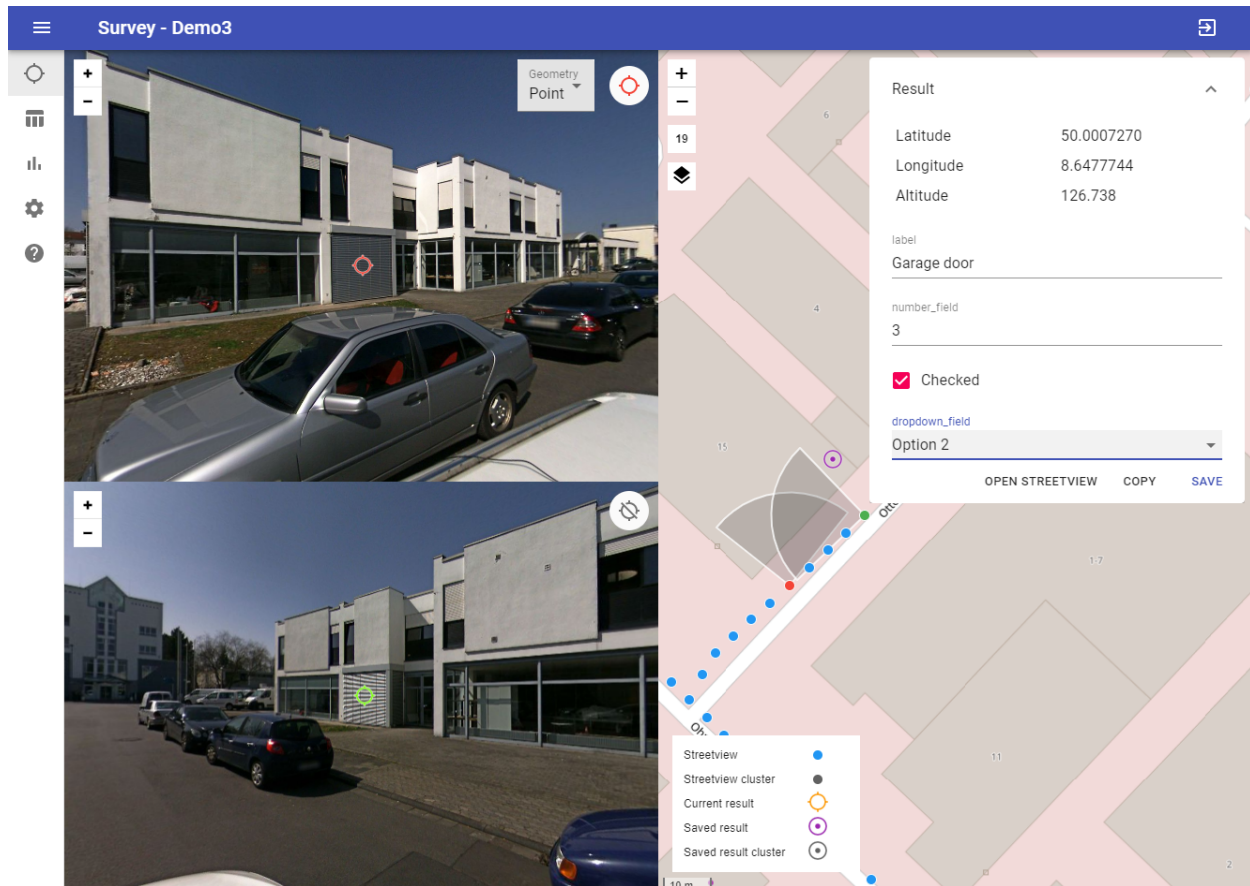
Using the map decide what needs to be measured. For example, let's try to collect data about the garage door of a building. Click on the map on the approximate location of the building.



Ideally the object should be visible in the center of both top and bottom streetviews right after the map click. Photogram automatically picks two streetviews with an optimal 90 degree angle between the two streetviews.




Next is to identify the measured object on both top and bottom streetviews and **double click** on it in the streetview panels.



The measured point can be moved by dragging.

By default **Geometry** (top right of the streetview panel) is set to **Point**. Set it to **Line** or **Rectangle** to measure lengths or areas. To add additional points (2 for Line and 4 for Rectangle) double click on the measured object in the streetview panel.

**IMPORTANT:** The creation order of the measured points must be identical for both top and bottom streetview. Creating the points in a clockwise sequence is recommended.

Notice that the result position is displayed on the map as the  icon, this is automatically updated if you move any measured point.

## Save

After the measured points are placed the **Result panel** should appear in the top right corner of the map panel.

The panel contains point coordinates:

Geometry for a point,


length for line

area for a rectangle.

Specify a label, in this case it's "Garage door" and then click the **Save button**.


Each project can have a unique form to match the collected data structure.

Make sure to populate the necessary fields with data.


This action adds the result into the server database, and places the result on the map with the following icon .

You could also copy the result into the clipboard by clicking on the **Copy button**.

## Edit

Click on a previously saved result using it's icon  on the map. Adjust the measured object position in the top and bottom streetviews panel or the Label in the **Result panel**. Click the **Save** button.

## Delete

Click on a previously saved result using it's icon  on the map. Click the **Delete** button in the **Result panel**.

## Data table

In the left menu click on the **Data table** menu item.

Photogram <

Data table - Demo3 Tom Tester ↗

Survey
   
 Data table
   
 Preferences
   
 Manual

☐

Label	Result	Geometry	Date ↓
<input type="checkbox"/> Object 1	14.524 m²	Rectangle	2018-11-26 13:31:03
<input type="checkbox"/> Garage door	50.0007337, 8.6477738, 126.830	Point	2018-11-26 13:29:38
<input type="checkbox"/> Object 2	4.430 m	Line	2018-11-26 13:25:41

Rows per page 10 ▾ 1-3 of 3 < >

A list of all the collected results will appear. The list is paginated, you can change the current page and the amount of results per page in the bottom right side of the table.

Table contains information like Label, Result, Geometry and Date.

## View

Click on the icon to view the result on the **Survey** page.

## Delete

Select one or multiple results by clicking on the ☐ checkbox.



A **Delete button** will appear in the top right corner of the table. Click on the **Delete button** to remove the selected results.

## Download

Click on the **Download button** in the top right corner of the table to download all the results in the [GeoJSON](#) format. This file can be used with ArcGIS and QGIS.

# Preferences

## Language

Change the current language

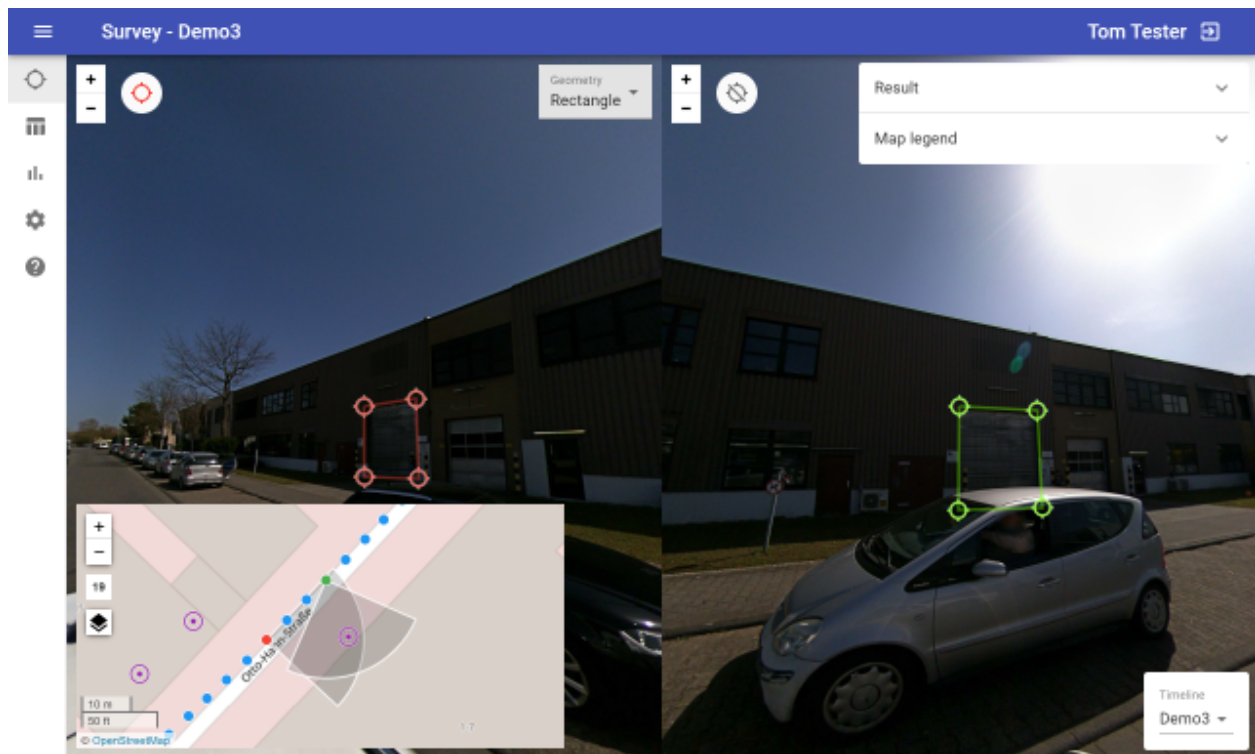
## Layout

Default: **Large Map** on the right side

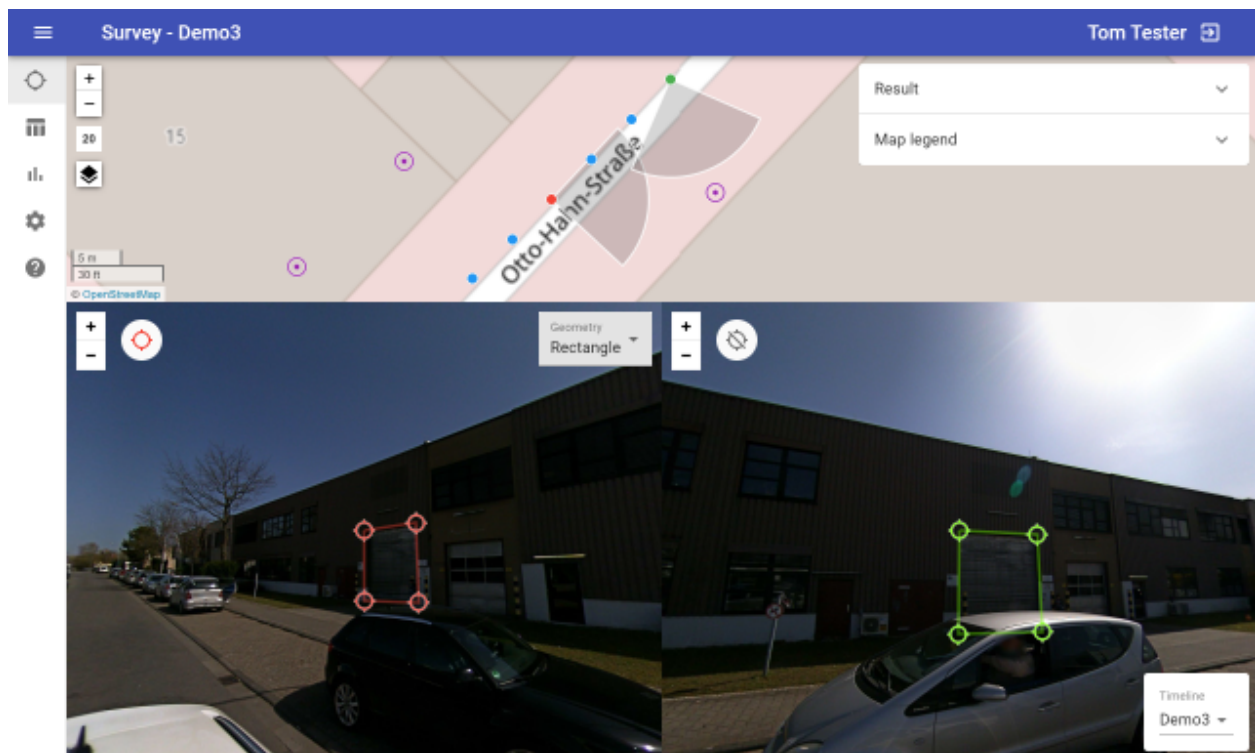




For **Vertical Analysis**: Map on bottom left side



For **Horizontal Analysis**: Map on top side



# Account



Current logged in user first name last name as well as the logout button are displayed in the top right corner of the browser window.

# Support

Please update first.

Support is provided for the newest Photogram program only.

Maybe your problem has already been solved?

Check

<https://www.applied-streetview.com/products/programs/photogram/>  
for a new release.

## Contact

Support is available in English language.

**Helpdesk:** [support.applied-streetview.com](mailto:support@applied-streetview.com)  
**E-Mail:** [support@applied-streetview.com](mailto:support@applied-streetview.com)  
**Skype ID:** applied-streetview  
**Phone:** +49 6103 - 372 7494

# Consulting

We are available for hire for consulting.

Please contact:

**E-Mail:** [jan.martin@applied-streetview.com](mailto:jan.martin@applied-streetview.com)  
**Skype ID:** applied-streetview  
**Phone:** +49 6103 - 372 7494