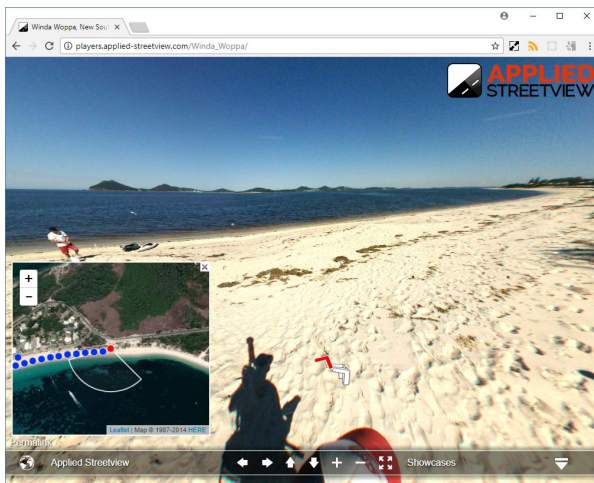
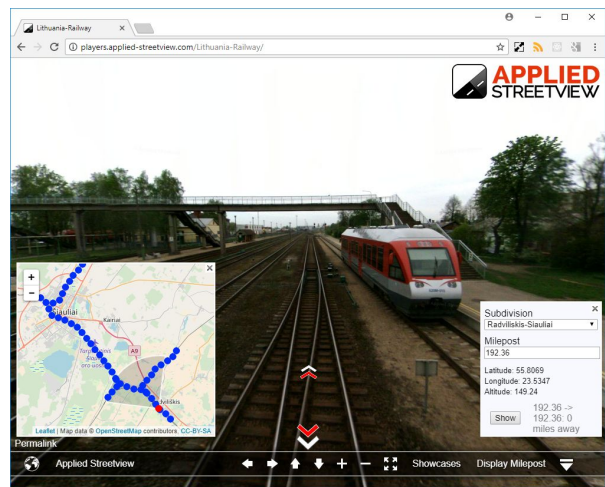
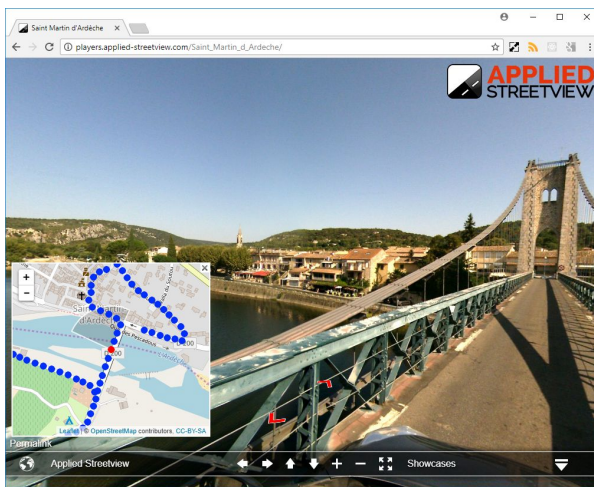




## Player Manual



# Index

<b>Player Options</b>	<b>3</b>
PC	4
Office	6
Internet/Intranet	7
Android	8
<b>Support</b>	<b>9</b>
<b>Consulting</b>	<b>9</b>

# Player Options

There are four ways to run the Applied Streetview player.

## PC

Use the Player tab in [Creator](#).

## Office

Using an [AS-server](#) program

## Internet or Intranet

Install the [player](#) to a LAMP web-server.

## Android

It works 100% offline with the [Android Player](#).

# PC

## Result

A PC (or laptop) with a browser running the player.

**The player can only be accessed from your PC or Laptop.**

For this, you will first need to process the Demo dataset.

Creator needs to be running for the player to work.

Download the latest [Creator](#) program.

It will work for 21 days without any limitations.

Install Creator on any 64-bit Windows 7, 8 or 10 PC or Laptop.

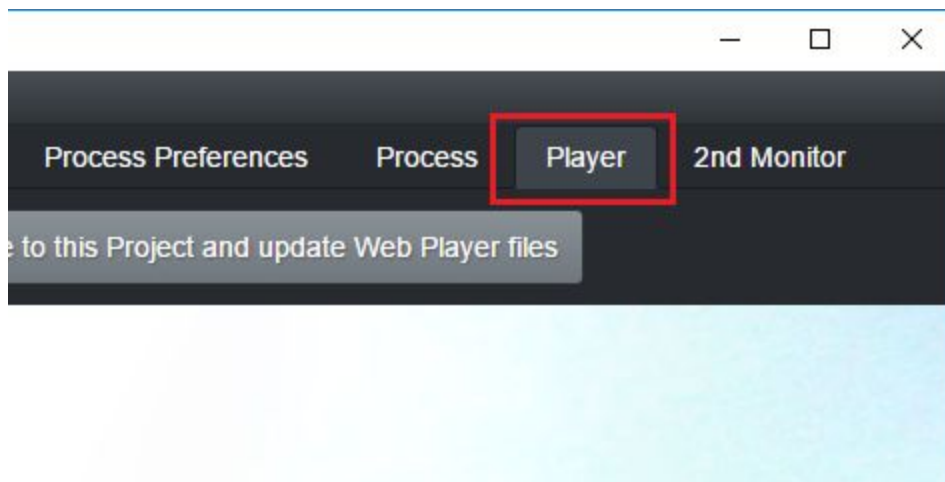
**Download** the **Demo.zip** dataset.

[Demo3-blurred.zip](#) (979 MB)

Unzip it to your hard drive.

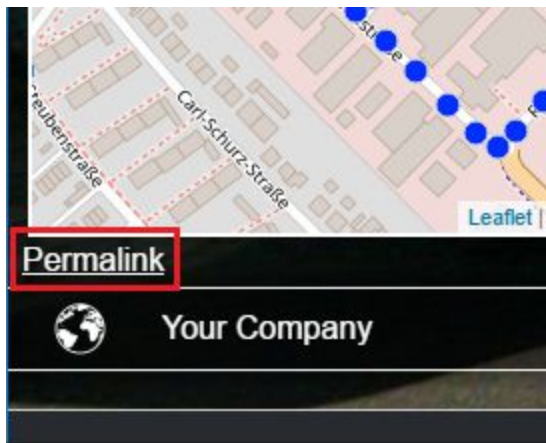
Now follow the [Creator Quick Starter Guide](#) to process the data.

When done, go to the **Player** tab:



The player will open in the section below.

Alternatively, click on the **Permalink** inside the player section to open the player in your default browser.



## Office

**AS-server** is an easy-to-handle Windows program you can install on any 32-bit or 64-bit Windows 7, 8 or 10 PC.

The programme makes all the players from processed Creator projects accessible to your whole office.

As long as the AS-server program is running, your colleagues will be able to access the players. It provides access for many different project players at the same time.

Download the [Demo3-blurred-player.zip](#) (1.59 GB) dataset.  
Unzip it to your hard drive.

[Download](#) AS-server.

Install it.

It will work for 21 days without any limitations.

See the [AS-server User Guide](#) for the set-up instructions.

## Internet/Intranet

For when you need a player that can be accessed from a web address, for example  
**<http://www.your-company.com/player>**

While the free Creator program is limited to a 21-day evaluation period, any player generated by it will continue to work past the expiry date.

We assume you are using a LAMP stack. (Linux, Apache MySQL, php)

If you have never worked with FileZilla, cPanel or phpMyAdmin, you should ask your company's IT department for help before installing the web player.

Download the [Demo3-blurred-player.zip](#) (1.59 GB) dataset.  
Unzip it to your hard drive.

The following is an excerpt from the [Creator manual](#) **Install the player to a web-server** chapter.

Minimum steps necessary:

### **Database:**

Create a new MySQL database on your server.

Name it **Demo3-blurred-player**.

Import the **Demo\player\Demo3-blurred-player.sql.zip** file to it.

### **Panorama tiles:**

Copy the **Demo\panorama-tiles** folder to your web-server.

### **Player:**

Adjust the **Demo\player\plugins\streetview\ajax\db.php** file for access to your own database.

Fill in your own access data:

```
$con=mysqli_connect('localhost','user','password','DBname');
```

Adjust the **Demo/player/player.xml** file for the panorama-tiles folder address on your web-server.

Fill in your own URL:

```
tilespath="../../../panorama-tiles"
```

Finally copy the folders to your web-server.

# Android

## 100% Offline

An Android tablet with a working player that needs no internet access at all. All of the streetviews and the map-tiles are on the tablet.

Works great with **Samsung Galaxy Tab S2** (both 8- and 10-inch versions).

Download and unzip the **Langen** offline project to your tablet. (762 MB).  
<http://updates.applied-streetview.com/Remote-Control/Langen-OSM.zip>

This offline project has been created by the Creator program. You can convert any Creator project into an offline project by yourself.

Unzipping on a tablet might take some time. Alternatively, download and unzip to a SD card using your PC then insert the SD card with the unzipped folder into the tablet.

[Purchase it](#) to get the Android player. There is no trial version.

Install the Android player onto the tablet and open it. Click the **New Project** button and pick the unzipped **Langen** folder to add it. After that, open the new "**Langen**" project visible on the same page.

See this page for what the Android Offline Player should look like her:  
<http://www.applied-streetview.com/android-player/>

You can now add bookmarks using the icon in the top left-hand corner. The menu is in the top right-hand corner.



# Support

Support is provided for the latest version of player only.  
Maybe your problem has already been solved?

Check

<http://www.applied-streetview.com/creator>

for new releases first.

Then re-create the player and check again for issues.

## Contact

Support is available in English language.

**Helpdesk:** [support.applied-streetview.com](http://support.applied-streetview.com)

**E-Mail:** [support@applied-streetview.com](mailto:support@applied-streetview.com)

**Skype ID:** applied-streetview

**Phone:** +49 6103 - 372 7494

# Consulting

We are available for hire for consulting.

Please contact:

**E-Mail:** [jan.martin@applied-streetview.com](mailto:jan.martin@applied-streetview.com)

**Skype ID:** applied-streetview

**Phone:** +49 6103 - 372 7494